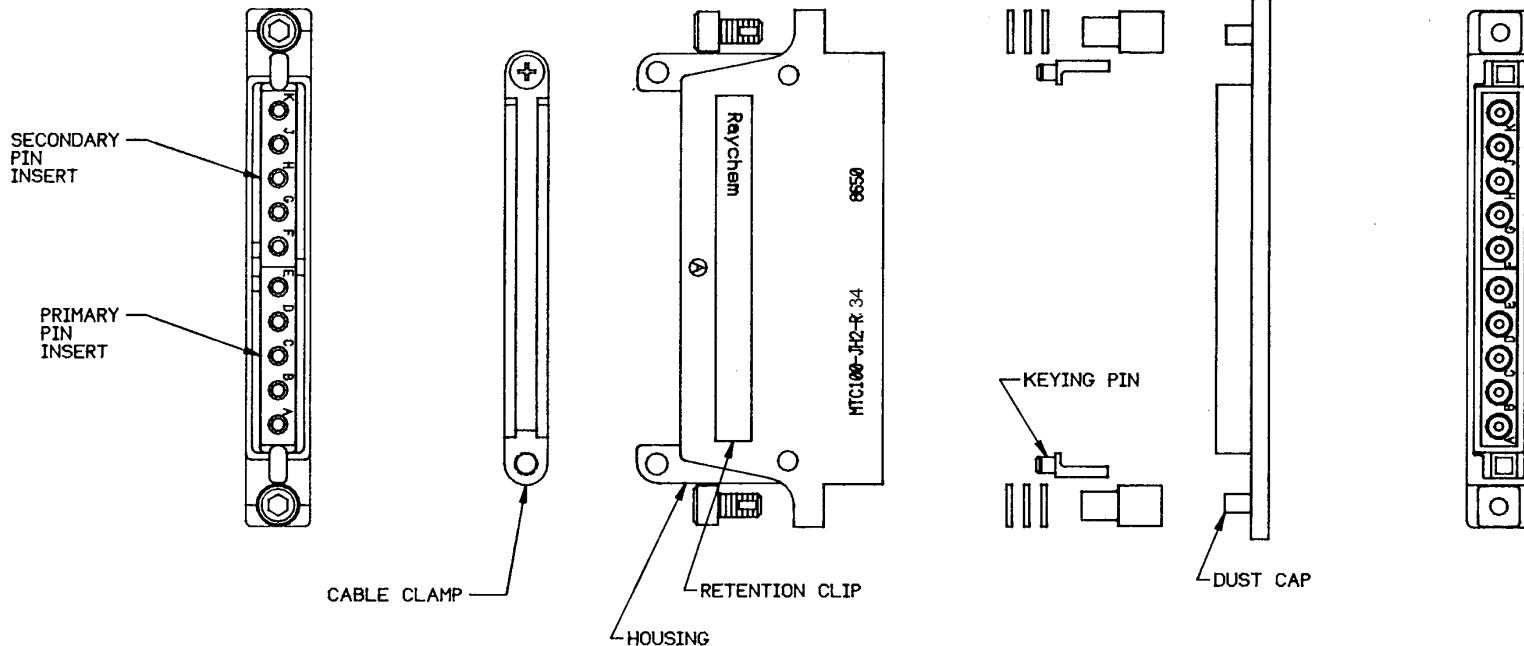


NOTES:

- THIS KIT CONSISTS OF:
 - a) MTC100-JH2-R 34 HOUSING ASSEMBLY
 - b) MTCP-116-05P1 PRIMARY PIN INSERT
 - c) MTCP-116-05P2 SECONDARY PIN INSERT
 THE INSERTS ARE PRE-ASSEMBLED INTO THE HOUSING.
- FOR FURTHER DETAILS REFER TO THE APPLICABLE RAYCHEM SPECIFICATION CONTROL DRAWING. (SEE NOTE 1)
- REFER TO RAYCHEM INFORMATION DRAWING D-659-0097 FOR APPLICATION DETAILS.
- KIT NUMBER MTCP-KT2-0002 APPEARS ONLY ON THE UNIT PACKAGE.

| REVISIONS | | | |
|-----------|---|----------|----------|
| LTR | DESCRIPTION | DATE | APPROVED |
| A | REDRAWN AND REVISED ON PERSONAL DESIGNER PER ECN #7-89582 | 08/02/87 | J.B. |
| B | REV PER ECO 15-012513 | 9-1-15 | RL |



SPECIFICATION CONTROL DRAWING © Raychem Corporation 1988

| | | |
|--|-----------------------------|--|
| UNLESS OTHERWISE SPECIFIED DIMENSIONS ARE IN INCHES. METRIC DIMENSIONS ARE IN BRACKETS. DECIMALS .XXX ± (mm) .XX ± (mm) ANGLES .X ± | DRAWN LUTTICKEN 88JAN07 | Raychem RAYCHEM CORPORATION 3800 CONSTITUTION DRIVE MENLO PARK, CALIFORNIA 94025 |
| | CHECKED J.B. | |
| | APPROVED J.BLAIR 88JAN13 | TITLE KIT, RECEPTACLE, FLANGELESS, 2", POWER BLOCK, CAD. PLATED, W/PIN INSERT |
| | APPROVED J. CAMERON 88JAN20 | MTCP SERIES |
| CAD NAME MTCP/KT20002S | THIRD ANGLE PROJECTION | SIZE C CODE IDENT. NO. 06090 DWG. NO. MTCP-KT2-0002 |
| WEIGHT: MAXIMUM .0957 lbs. [43.41 grams] | DO NOT SCALE THIS DRAWING | SHEET 1 OF 1 |

If this document is printed it becomes uncontrolled.
Check with the web for latest revision.