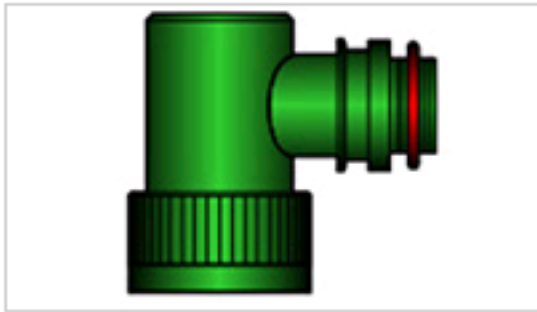




TXR54AC90-1204AIF Product Details

[Share](#) | [Print](#) | [Email](#)


✓ Active

Braid, Fixed, Spin and Tinel Lock Adapters

TXR54AC90-1204AIF

TXR54AC90-1204AIF

TE Internal Number: 659525-000

Product Highlights [View All](#)

- Applies To Cable
- Military Style Number = MIL-C-26482
- Style = Tinel Lock
- Connector Code = 54
- 90°

- [Pricing & Availability](#)
- [Request Sample](#)
- [Add to My Part List](#)
- [Buy Product through Distributor](#)

Feedback

[Documents](#) | [Features](#) | [Compliance](#)

Please Note:

Use the Product Drawing for all design activity

Product Type Features

Style	Tinel Lock
Angle	90°
Connector Shell Size	12
Finish	Electroless Nickel
Color	Bright

Dimensions

Boot Diameter (mm [in])	13.97 [0.550]
Cable Diameter Range (mm [in])	3.50 - 5.50 [0.140 - 0.220]

Body Features

Connector Code	54
Entry Size	4
Material	Aluminum Alloy

Configuration Features

Braid	Single 36 AWG Braid
-------	---------------------

Industry Standards

Government/Industry Qualification	No
Military Style Number	MIL-C-26482
RoHS/ELV Compliance	RoHS compliant, ELV compliant
Lead Free Solder Processes	Not relevant for lead free process
RoHS/ELV Compliance History	Always was RoHS compliant

Conditions for Usage

Applies To	Cable
------------	-------

Other

Brand	Raychem
Comment	For specific shell size information, refer to "Hardware" or Catalog.

Related Products

Not quite the product you're looking for?

[Find Similar Products](#)

[View Part in Product Feature Selector](#)

[Check for Tooling](#)

Corporate Information

- [About TE](#)
- [Investors](#)
- [News Room](#)
- [Supplier Portal](#)
- [Careers](#)
- [Terms & Conditions](#)
- [Privacy Policy](#)
- [Global Accessibility Statement](#)

Quick Links

- [Distributor Inventory](#)
- [Product Cross Reference](#)
- [Documents & Drawings](#)
- [Product Compliance Support Center](#)
- [Site Map](#)

Customer Support

- [Email or Chat With Us](#)
- [Find a Phone Number](#)
- [Knowledge Base](#)
- [Manage Your Account](#)

Keep Me Informed

