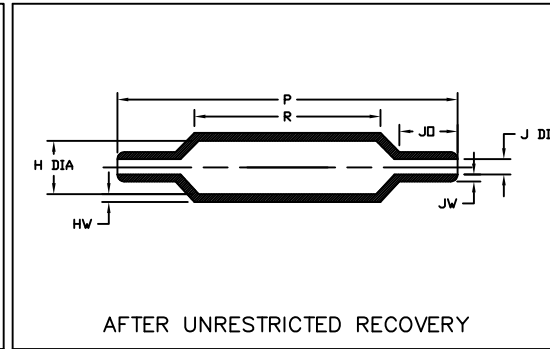
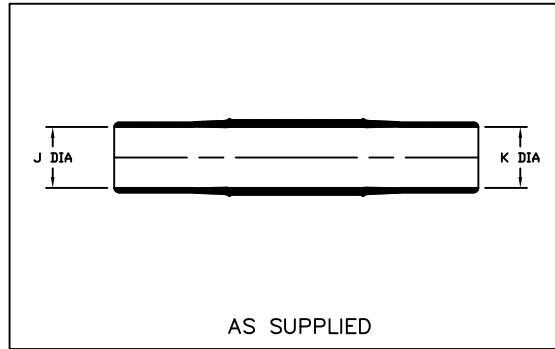


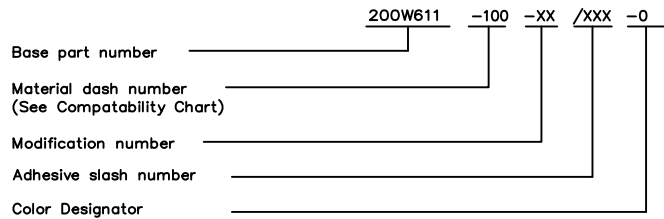
**NOTES**

- All dimensions are in  $\frac{\text{inches}}{\text{[millimeters]}}$
- Dimensions appearing in table are as follows:
  - a - As Supplied
  - b - After Unrestricted Recovery



REVISIONS		
LTR	DESCRIPTION	DATE
A	INITIAL RELEASE PER ECO-17-001822	02/05/2017

**ORDERING INFORMATION**



PART NUMBER	H	J		P	R	JO	HW	JW
	Max	Min	Max	±10%	±10%	±10%	±20%	±20%
	b	a	b	b	b	b	b	b
200W611-100	<u>0.63</u> [16,0]	<u>0.59</u> [15,0]	<u>0.16</u> [4,0]	<u>3.54</u> [90,0]	<u>1.97</u> [50,0]	<u>0.59</u> [15,0]	<u>.06</u> [1,5]	<u>.05</u> [1,3]

Raychem Molded Parts  
**CUSTOMER DRAWING**

MATERIAL DASH NO.	MATERIAL DESCRIPTION	RT SPEC	COATING SLASH NO.	COATING S NO.	COATING DESCRIPTION
-100	Polyolefin, Semi Flexible ZEROHAL™	RW-2082			

THIS DRAWING AND THE INFORMATION SET FORTH HEREON ARE THE PROPERTY OF TYCO ELECTRONICS CORPORATION, AND ARE TO BE HELD IN TRUST AND CONFIDENCE. PUBLICATION, DUPLICATION, DISCLOSURE OR USE FOR ANY PURPOSE NOT EXPRESSLY AUTHORIZED IN WRITING BY TYCO ELECTRONICS CORPORATION IS PROHIBITED.

UNLESS OTHERWISE SPECIFIED DIMENSIONS ARE METRIC AND INCHES ARE IN BRACKETS. DECIMAL TOLERANCES XXX ± 0.13 (.005) XX ± 0.25 (.01) X ± 0.50 (.10) ANGLE TOLERANCE .X ± 1 DEG.	DRAWN <b>MMazariegos</b> 02/06/17	APPROVED <b>M Pope</b> 02/06/17	 TE Connectivity
	RPN		
TYCO ELECTRONICS RESERVES THE RIGHT TO AMEND THIS DRAWING AT ANY TIME. USERS SHOULD EVALUATE THE SUITABILITY OF THE PRODUCT FOR THEIR APPLICATION.	CAD FILE: <b>200W611-100_CD</b>	THIRD ANGLE PROJECTION	SIZE <b>B</b>
© 2013 Tyco Electronics Corporation. All rights reserved.			CODE IDENT. NO. <b>06090</b> DWG. NO. <b>200W611-100</b>

DO NOT SCALE THIS DRAWING SHEET 1 OF 1