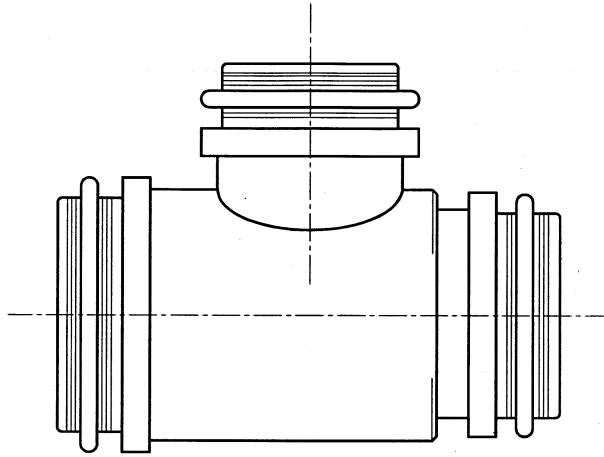


REVISIONS			
LTR	DESCRIPTION	DATE	APPROVED
N/C	INITIAL RELEASE	JULY 04	KJW



TRANSITION ASSEMBLY - 90°

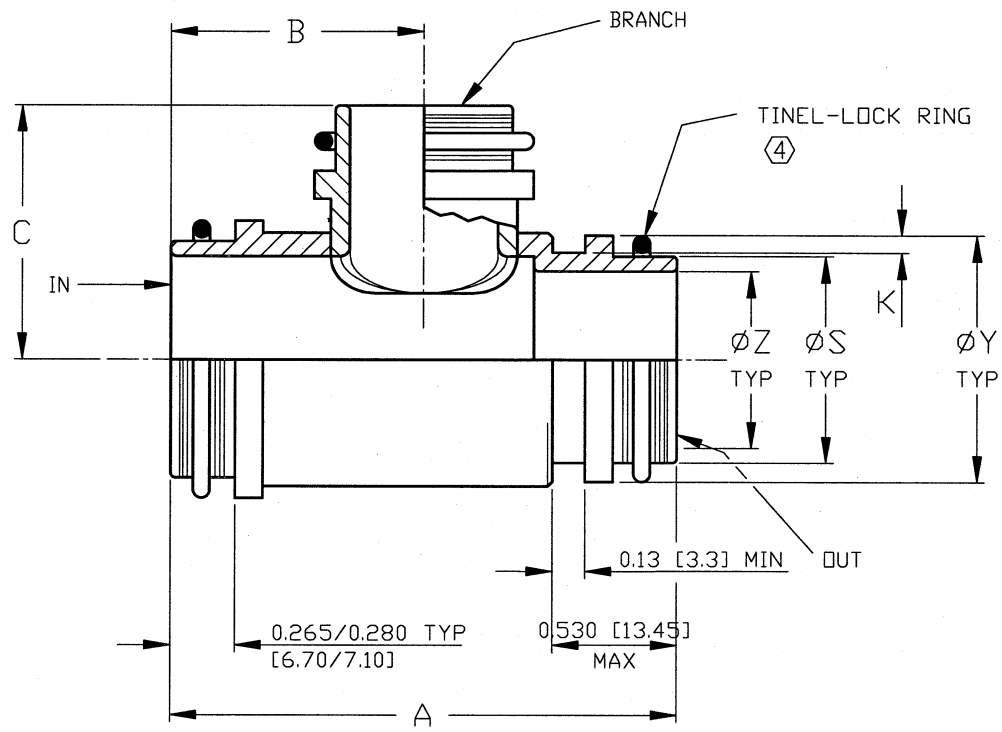
NOTES

- THIS PRODUCT IS DESIGNED TO PROVIDE CONTINUOUS SHIELDING AT THE BRANCH OF AN ELECTRICAL HARNESS AND ACCEPT HEAT SHRINK LIPPED BOOTS (WHERE APPLICABLE).
- TRANSITION MATERIAL IS ALUMINUM ALLOY PER QQ-A-225 OR EQUIVALENT.
- SEE SHEETS 2 AND 3 FOR ORDERING INFORMATION AND PART NUMBERING SYSTEM.
- SEE DRAWING TR FOR DETAIL ON TINEL-LOCK RING. RINGS ARE DESIGNED TO BE HEATED ELECTRICALLY. ALL RINGS ARE MARKED WITH THERMOCHROMIC PAINT WHICH CHANGES COLOUR WHEN INSTALLATION TEMPERATURE IS REACHED.
- ADAPTER TO BE PERMANENTLY MARKED WITH CODE IDENTIFICATION NUMBER AND FULL PART NUMBER. (e.g. 06090-TXE-T-14-10-10CAI-F).
- TINEL-LOCK RING AND INTERNAL PTFE COATING IS TO BE SPECIFIED IN PART NUMBER WHEN ORDERING.
- FOR ALTERNATIVE MATERIALS AND PLATING FINISHES CONTACT TYCO/RAYCHEM.

SPECIFICATION CONTROL DRAWING

If this document is printed it becomes uncontrolled. Check for the latest revision

UNLESS OTHERWISE SPECIFIED DIMENSIONS ARE IN INCHES. METRIC DIMENSIONS ARE IN BRACKETS.	DRAWN IRT	DATE JULY 04	<p>Tyco Electronics Corporation 300 Constitution Drive Menlo Park, CA. USA 94025</p>			
	CHECKED KJW	DATE JULY 04				
	APPROVED KJW	DATE JULY 04				
	APPROVED KJW	DATE JULY 04				
DECIMALS	CAD NAME 85001		TITLE TRANSITION ASSEMBLY - TINEL TM LOCK - 90°			
.X ± --- [mm]	THIRD ANGLE PROJECTION		SIZE A4	CODE IDENT. NO. 06090	DWG. NO. TXE-T-14-10-10C*I-F	REV N/C
.XX ± --- [mm]			DO NOT SCALE THIS DWG			
.XXX ± --- [mm]			SHEET 1 OF 3			
ANGLES	TXE-T-FSCD-1					
.X ± ---						



NOTE
 1. ORDERING CODE IS:
 IN, OUT AND BRANCH e.g. 14-10-10

A	B	C
±0.030 [±0.75]	±0.020 [±0.50]	±0.030 [±0.75]
2.145 [54.50]	1.070 [27.25]	1.100 [28.00]

ENTRY SIZE	ØZ +0.010 -0.020 [+0.25] [-0.50]	ØS	ØY ±0.015 [±0.38]	K MIN
10	0.625 [15.88]	0.752 [19.11] 0.742 [18.84]	0.925 [23.49]	0.04 [1.0]
14	0.875 [22.23]	1.002 [25.46] 0.991 [25.17]	1.175 [29.84]	-

SIZE A4	CODE IDENT. NO. 06090	DWG. NO. TXE-T-14-10-10C*I-F	REV N/C
DO NOT SCALE THIS DWG		SHEET 2 OF 3	

If this document is printed it becomes uncontrolled. Check for the latest revision

PART NUMBERING SYSTEM

TXE - T - 14 - 10 - 10 C A I - F

PREFIX _____
 TINEL-LOCK TRANSITION - 90° BRANCH

ENTRY SIZE: IN _____

ENTRY SIZE: OUT _____

ENTRY SIZE: BRANCH OUT _____

FINISH (SEE S-CH00-0157-002) _____
 C = ELECTROLESS NICKEL

④ BRAID DESIGNATOR _____
 A = SINGLE LAYER 36 AWG
 B = DOUBLE LAYER 36 AWG

I = RING WITH INSULATING LINING _____

F = PTFE INTERNAL COATING _____

SIZE	CODE IDENT. NO.	DWG. NO.	REV
A4	06090	TXE-T-14-10-10C*I-F	N/C
DO NOT SCALE THIS DWG		SHEET 3 OF 3	

If this document is printed it becomes uncontrolled. Check for the latest revision