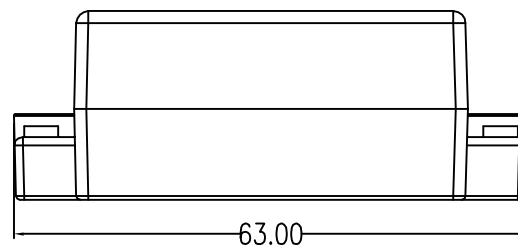
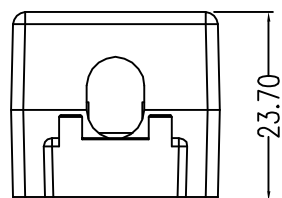


REFERENCE



ACCORDING TO : ANSI/TIA-568-C.2  
ISO/IEC 11801 2nd Edition  
IEC 60603-7

**MATERIAL**

HOUSING : ABS,UL94V-0.  
IDC PLASTIC : PC,UL94V-0.  
IDC TERMINALS : PHOSPHOR BRONZE,NICKEL PLATED.

**PHYSICAL CHARACTERISTICS**

OPERATING TEMPERATURE RANGE : -10°C TO 60°C.  
STORAGE TEMPERATURE RANGE : -40°C TO 68°C.  
HUMIDITY : 10%~90%RH.

**ELECTRICAL**

INSULATION RESISTANCE : 500 MΩ.  
DIELECTRIC WITHSTANDING VOLTAGE : 1000 V AC.  
DC CURRENT RATING : 1.5 Amps.  
DC RESISTANCE : 0.1Ω.  
CONTACT RESISTANCE : 20mΩ.

**ENCLOSURE**

NYLON CABLE TIE X 2 PCS  
SCREW X 2 PCS  
TWIN ADHESIVE X 1 PC



Scale		1:1				Quest Technology Int'l, Inc 11200 NW 138th St., Medley, FL 33178			
3rd Angle Projection									
Unit		mm			Part No.		NCB-5008		
Date		2013/9/23			Title: Cat5e In-line UTP 110 IDC Coupler, White				
Tolerance					Drawn by		Checked by		Drawing No.
~20	~50	~150	150~	ANGLE	BORUEI				
±0.2	±0.4	±0.5	±1.5	±2°					