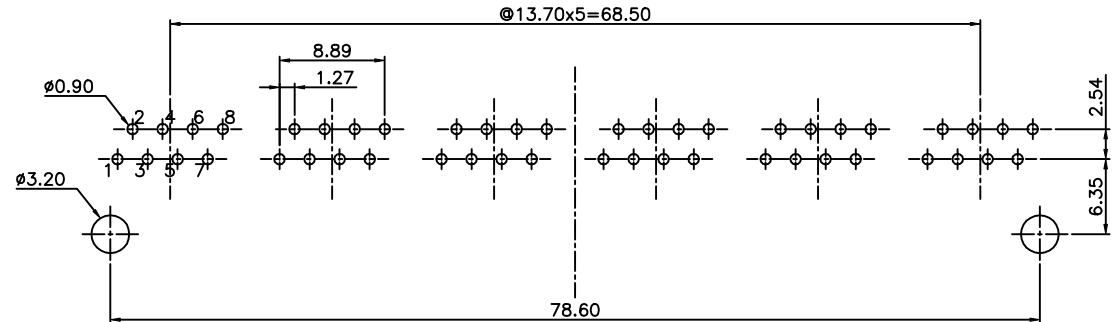
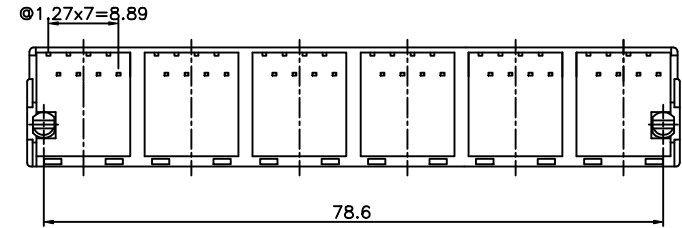
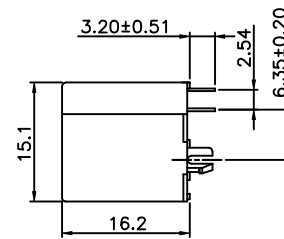
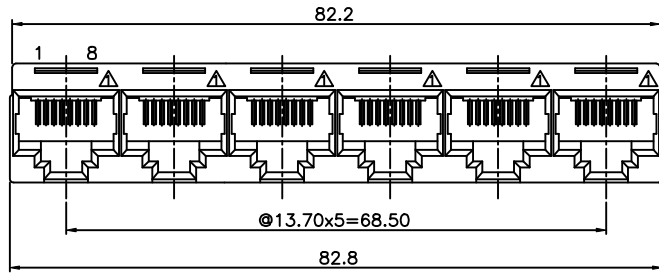


REVISION RECORD				
REV	ECO	DESCRIPTION	DRFT	CHKD
△		MODIFY DRAWING	Qianpu 4/21/03'	
△		NOTES MODIFY	Among 11/01/04'	



PC Board Layout
Component Side Shown

NOTES:

ELECTRICAL:

- VOLTAGE RATING : 125 VAC RMS.
- CURRENT RATING : 1.5 AMP.
- CONTACT RESISTANCE : 30 MILLIOHMS MAX.
- INSULATION RESISTANCE: 1000 MEGOHMS MIN @ 500 VDC.
- DIELECTRIC STRENGTH : 1000 VAC RMS 60Hz, 1MIN.

MECHANICAL:

- HOUSING MATERIAL : GLASS FILLED POLYESTER UL94V-0.
- CONTACT MATERIAL : PHOSPHOR BRONZE t=0.35mm.
- PLATING : GOLD PLATING OVER NICKEL.
- OPERATING LIFE : 750 CYCLES MIN.
- PCB RETENTION PRE-SOLDER : 1 LB MIN.
- PCB RETENTION POST-SOLDER: 10 LBS MIN.

ENVIRONMENTAL:

- STORAGE : -40°C TO +85°C.
- OPERATION: -40°C TO +85°C.

MATES WITH MODULAR PLUG CONFORMING TO
FCC PART 68, SUBPART F.

PART NUMBER: E5288-30E14X

- 1- 3u" 2- 6u"
- 3- 15u" 4- 30u"
- 5- 50u"

DETACHED LISTS	← MM (INCH) →		DFTD Teng	DATE 7/13/99'	FULL RISE ELECTRONIC CO., LTD	
	TOLERANCES EXCEPT AS NOTED		CHKD <small>SMY</small>	DATE <small>SMY</small>		
			MFO	DATE	TITLE TOP ENTRY GANG JACK W/O SHIELD (6 PORTS)	
			APPVL <small>USD</small>	DATE <small>SMY</small>		
		MATERIAL :		DRAWING NO. GE523A10 SIZE A3 REV 2		
		FINISH :				
		SCALE : 1.5:1		DO NOT SCALE DRAWING SHEET X OF Y		
		THIRD ANGLE PROJECTION				