

Search Results

Evaluate

- FAQ's

Design a Solution

- Part Drawings

- DXF-NetKey SC Si ..

- PDF-NetKey SC Si ..

- DWG-NetKey SC Si ..

How to Buy

- Bill of Material

- Favorite Products List

- Locate Distributor

Home > Products Overview > Search Results >

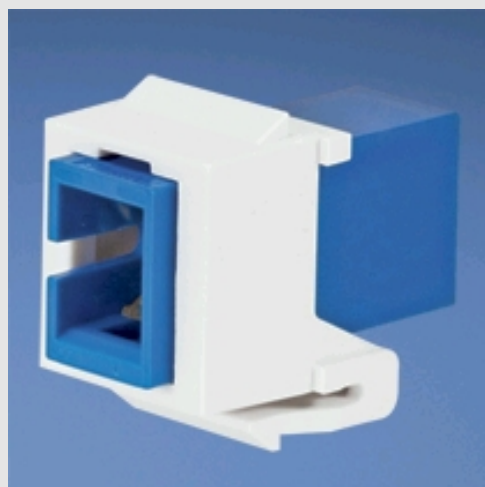
Current refinements (click  to remove) Search Tips  Within Results

 Text Search: 'NKHSCMZEI'

▀ Your search term " " was corrected to 'nkscmzei'


Your search criteria matched only one product, shown below

**NKSCMZEI**



- TIA/EIA604 FOCIS-3 compliant adapters
- Exceed TIA/EIA568-B.3 requirements
- Improved protective cap fully surrounds split sleeve opening
- Choice of phosphor bronze or zirconia ceramic split sleeves to fit specific network requirements; zirconia ceramic split sleeves are required for singlemode applications
- Every adapter is laser marked with Q.C. number to assure 100% traceability
- Keystone module design can be used in all keystone closet products and work area outlets
- Modules available in multiple colors - allows color -coding for network segregation
- *NetKey*® SC Simplex Fiber Optic Adapter Modules are commonly used with *NetKey*® Patch Panels‡

‡ *NetKey*® Fiber Optic Adapter Modules are **NOT** compatible with *PANDUIT*® *Mini-Com*® Faceplates, Surface Mount Boxes, or Modular Patch Panels.

▀ Part Number	NKSCMZEI
▀ RoHS Compliancy Status	Compliant
▀ Part Description	Keystone module supplied with one SC singlemode simplex adapter with zirconia ceramic split sleeve.
▀ Adapter Color	Blue
▀ Module Color	Electric Ivory
▀ Pricing Description	NetKey Fiber Optic Adapter Module
▀ Min. Order UOM	PC
▀ Min. Order Qty.	1
▀ BOM Qty. (# of Pkgs.)	<input type="text" value="0"/>
▀ Add to Favorite Product List	

Please [register](#) to utilize the 'Bill of Materials', 'Submit Quotes' and 'Favorite Product List' features.