

Search Results

Evaluate

- FAQ's
- Product Bulletins
- PDFPan-Steel MS..

Design a Solution

- Catalog Cut Sheet
- PDFMSW75T30CR2
- Part Drawings
- PDFBuckles for ..

How to Buy


- Bill of Material
- Favorite Products List
- Locate Distributor

Install & Maintain

- Application Guides
- PDFPan-Steel St..

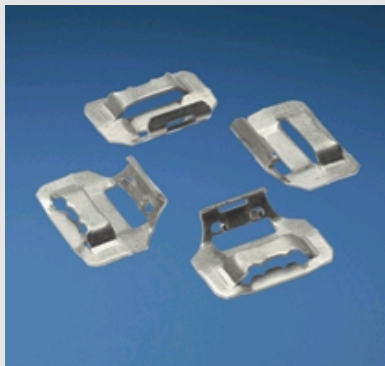
Home > Products Overview > Search Results >

Current refinements (click  to remove) Search Tips

 Text Search: 'MSBW75-C2'

Your search criteria matched only one product, shown below

MSBW75-C2



Metal Strapping Buckle

- Buckle design provides a low finished profile
- After tensioning cut end is locked inside buckle – no sharp edges

Part Number	MSBW75C2
RoHS Compliancy Status	Compliant
Part Description	Individual low profile buckles used with metal strapping.
Material	Stainless Steel Type 201
Color	Natural
Width (In.)	0.75
Width (mm)	19.1
Cross Section	.075 Inch Wide Strapping
Locking Style	Fold Over
Material Flammability Rating	Non-Flammable
Min. Loop Tensile Strength (Lbs.)	2400
PlenumRated	B, C, And D Per NEC 300.22
Pricing Description	MS Buckle, 201 SS, 0.75" (19.05mm) Wd Strapping
Temperature Range	-80°C– 538°C
Min. Order UOM	PC
Min. Order Qty.	100
BOM Qty. (# of Pkgs.)	<input type="text" value="0"/>
Add to Favorite Product List	e

Please [register](#) to utilize the 'Bill of Materials', 'Submit Quotes' and 'Favorite Product List' features.