


Search Results

- Evaluate
  - FAQ's
- How to Buy
  - Bill of Material
  - Favorite Products List
  - Locate Distributor

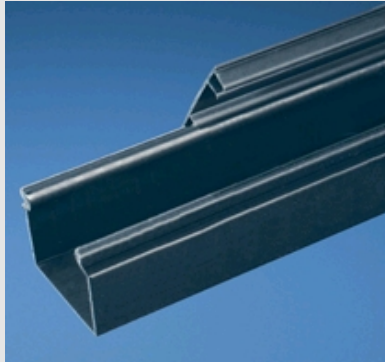
Home > Products Overview > Search Results >

Current refinements (click  to remove) Search Tips

 Text Search: 'HS3X4BL6NM'

Your search criteria matched only one product, shown below

## HS3X4BL6NM



Type HS Raceway is ideal for applications that require easy access in control panels and communication closets for frequent equipment modifications or repairs where moves, adds and changes are common. Due to the hinging feature, Hinged Cover Solid Wall Raceway reduces the time and hassle associated with removing and reinstalling traditional raceway cover to perform maintenance or changes.


### Specifications

- **Base and covers sold separately**
- Made of lead-free PVC
- Rated for continuous use temperature: 122°F (50°C)
- UL94 Flammability Rating V-0
- Conforms with NFPA 79 -2002 section 14.3.1 requirement for flame retardant material
- Available in light gray and white; black available in 2x2 and 4x4 only

### Features and Benefits

- Compatible with NetCube Wall Mount Cabinet (NC24S)
- Integrated hinged cover design allows easy access to wiring without hassle of removing and reinstalling cover
- Dual-sided hinge can open up to 100° from either sidewall of duct base for easy access to channel
- Cover retention flanges allows the cover to open and close easily
- Base scoreline allows sidewall sections to be more easily removed
- Cover removal rib makes cover easy to open from either side

Base and cover sold separately.

Part Number	HS3X4BL6NM
RoHS Compliancy Status	Compliant
Part Description	Used to carry the cables horizontally throughout the system. Base and covers sold separately.
Color	Black
Length (ft.)	6
Length (m)	1.8
CE Compliant	Yes
Duct Size W x H (In.)	3.25x4.00
Duct Size W x H (mm)	82.6x101.6
Pricing Description	Solid Hinged Duct,PVC,3"X4"X6',Black
Cover Part Number	HC3BL6
Min. Order UOM	FT
Min. Order Qty.	6
BOM Qty. (# of Pkgs.)	<input type="text" value="0"/>
Add to Favorite Product List	

Please [register](#) to utilize the 'Bill of Materials', 'Submit Quotes' and 'Favorite Product List' features.