

Search Results

Evaluate

- FAQ's
- Line Cards
- PDFAchieve Pane ..
- Videos
- WMV-DIN Rail Duc

Design a Solution

- Catalog Cut Sheet
- PDFDRD22LG6 Pro

How to Buy

- Bill of Material
- Favorite Products List
- Locate Distributor

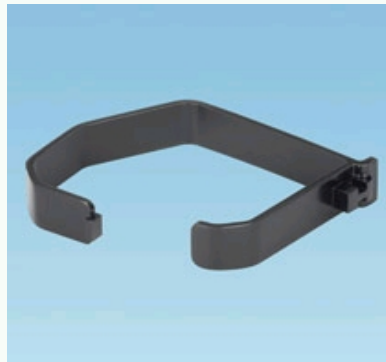
Home > Products Overview > Search Results >

Current refinements (click to remove) Search Tips

Text Search: 'DRDWR3-X'

Your search criteria matched only one product, shown below

DRDWR3-X



- Space saving design positions DIN rail and components off the panel directly above an integrated wire management channel for up to a 30% smaller footprint for duct and components; increased design flexibility and component access for easier installation and maintenance
- DIN rail and DIN component compatible with standard 35mm or 15mm rails and many DIN rail mount components for design flexibility
- Integrated DIN rail fastening slot allows the DIN rail to mount directly to product with plastic thread cutting screws for up to 40% faster duct and rail installation and reduced labor costs
- Hinged cover remains attached during maintenance and upgrades preventing lost covers, ensuring panel integrity, safety and aesthetics; L-shaped cover acts as ledge to aid wire installation for ease of use
- Slotted platform (horizontal) manage the wire from channel mounted components, outer sidewall slots (vertical) manage wire from adjacent panel mounted components; unique finger and slot progression for optimal wire management and aesthetics

- Channel pass through slots allows wires to transition internally between channels to ease wire connections to either side of components mounted on the same rail minimizing wire length and reducing material cost
- Optional wire retainer accessory retains cabling with cover opened or removed easing wire installation and future wire additions

Part Number	DRDWR3X
RoHS Compliancy Status	Compliant
Part Description	3" wire retainer for PanelMax™ DIN Rail Wiring Duct. Black.
Product Type	Type DRD DIN Rail Wiring Duct
Material	ABS
Color	Black
Pricing Description	3" Wire Retainer for PanelMax DIN Rail Wiring Duct
Min. Order UOM	PC
Min. Order Qty.	10
BOM Qty. (# of Pkgs.)	<input type="text" value="0"/>
Add to Favorite Product List	<input type="button" value="e"/>

Please [register](#) to utilize the 'Bill of Materials', 'Submit Quotes' and 'Favorite Product List' features.