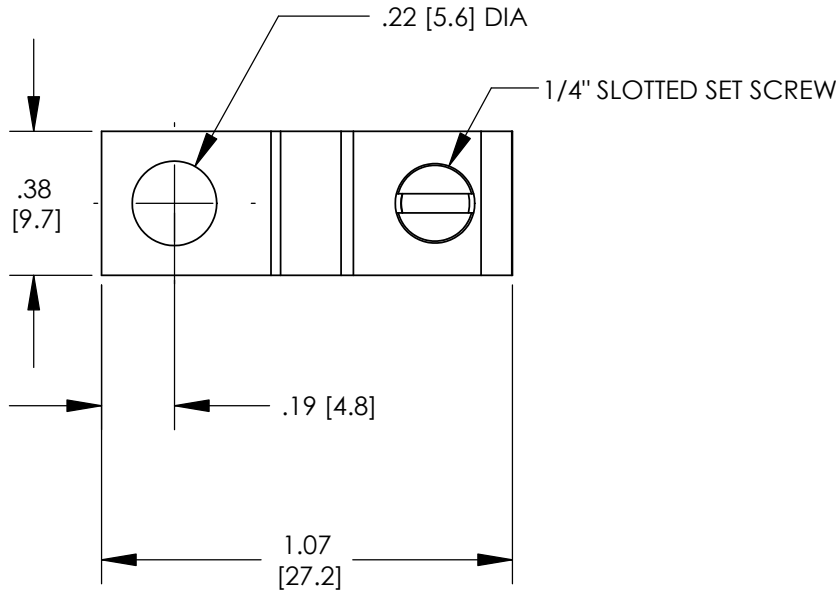
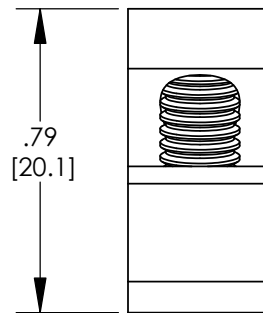
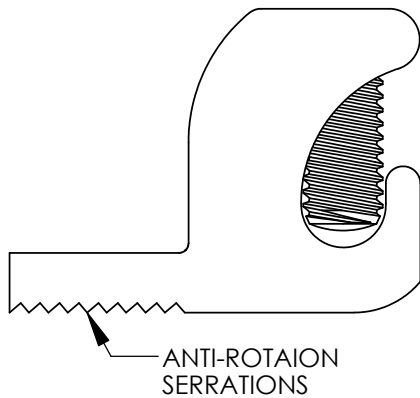


THIS COPY IS PROVIDED ON A RESTRICTED BASIS AND IS NOT TO BE USED IN ANY WAY DETRIMENTAL TO THE INTERESTS OF PANDUIT CORP.



NOTES:

1. DIMENSIONS IN PARENTHESIS ARE MILLIMETERS.
2. UL LISTED AND CSA CERTIFIED. DUAL RATED CU9AL FOR ALUMINUM OR COPPER CONDUCTORS.
3. MATERIAL: BODY - ALUMINUM, TIN PLATED
SCREW - STEEL, ZINC PLATED
4. FOR COPPER AND ALUMINUM STRANDED WIRE.
WIRE RANGE: #4AWG - #14AWG
5. TIGHTENING TORQUE:
#4AWG - #6AWG - 45 in/lbs [5.0 N.m]
#8AWG - 40 in/lbs [4.5 N.m]
#10AWG - #14AWG - 35 in/lbs [3.9 N.M]
6. STUD SIZE: 1/4"
7. ALL DIMENSIONS SHOWN ARE NOMINAL.
8. PACKAGE QUANTITY: -C = 100
9. ANTI-OXIDANT JOINT COMPOUND RECOMMENDED.



C41713_01

				PANDUIT CORP. TINLEY PARK, ILLINOIS		
				ALUMINUM LAY-IN LUG - #4AWG - #14AWG (LI-50S-C) CUSTOMER DRAWING		
01	8/07	JHNU	LEM	ADDED NOTE 9 REVISED NOTE 2: REMOVED DIRECT BURIAL REFERENCE		
00	8/07	JHNU	LEM	DRAWING RELEASED		
REV	DATE	BY	CHK	DESCRIPTION	ECN	PM
					APP	DRAWN BY JHNU
						CHK'D
						SCALE NONE
						DRAWING NO / CAD FILE C41713