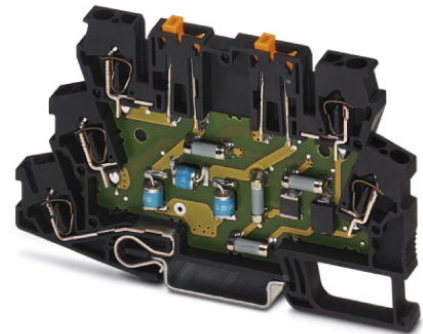




Extract from the online catalog

# TT-ST-M-2-PE-24DC

Order No.: 2858904



<http://eshop.phoenixcontact.de/phoenix/treeViewClick.do?UID=2858904>

TERMITRAB, spring-cage modular terminal block with integrated surge protection and disconnect knives, for assembly on NS 35/7.5, voltage  $U_N$  24 V DC, terminal width: 6.2 mm, cover width: 2.2 mm

Commercial data	
EAN	4017918938024
Pack	10 pcs.
Customs tariff	85363030
Weight/Piece	0.03143 KG
Catalog page information	Page 78 (TT-2007)

#### Product notes

WEEE/RoHS-compliant since:  
06/28/2006



<http://www.download.phoenixcontact.com>  
Please note that the data given here has been taken from the online catalog. For comprehensive information and data, please refer to the user documentation. The General Terms and Conditions of Use apply to Internet downloads.

## Technical data

General	
Housing material	PA 6.6
Inflammability class acc. to UL 94	V2
Color	black

TT-ST-M-2-PE-24DC Order No.: 2858904  
<http://eshop.phoenixcontact.de/phoenix/treeViewClick.do?UID=2858904>

Standards for air and creepage distances	VDE 0110-1
	IEC 60664-1: 1992-10
Surge voltage category	III
Pollution degree	2
Total surge current (8/20) $\mu$ s	10 kA
Total surge current (10/350) $\mu$ s	2 kA
Ambient temperature (operation)	-40 °C ... 85 °C
Mounting type	DIN rail 35 mm
Design	Double-level terminal block with disconnect knife
Number of positions	2
Degree of protection	IP20
Direction of action	Line-Line & Line-Earth Ground
Width	6.20 mm
Height	63.50 mm
Length	100.00 mm
<b>Protective circuit</b>	
IEC category	C1
	C2
	C3
	D1
VDE requirement class	C1
	C2
	C3
	D1
Nominal voltage $U_N$	24 V DC
Max. operating voltage $U_{max}$	30 V DC
	21 V AC
Arrester rated voltage $U_c$	30 V DC
	21 V AC
Arrester rated voltage $U_c$ (Core-Core)	30 V DC
	21 V AC
Nominal current $I_N$	350 mA ( $\leq 45^\circ\text{C}$ )
Operating effective current $I_c$ at $U_c$	$\leq 10 \mu\text{A}$
Discharge current to PE at $U_c$	$\leq 2 \mu\text{A}$

TT-ST-M-2-PE-24DC Order No.: 2858904

<http://eshop.phoenixcontact.de/phoenix/treeViewClick.do?UID=2858904>

Nominal discharge surge current $I_n$ (8/20) $\mu\text{s}$ (Core-Core)	5 kA
Nominal discharge surge current $I_n$ (8/20) $\mu\text{s}$ (Core-Earth)	5 kA
Total surge current (8/20) $\mu\text{s}$	10 kA
Max. discharge surge current $I_{\text{max}}$ (8/20) $\mu\text{s}$ maximum (Core-Core)	5 kA
Max. discharge surge current $I_{\text{max}}$ (8/20) $\mu\text{s}$ maximum (Core-Earth)	5 kA
Nominal pulse current $I_{\text{an}}$ (10/1000) $\mu\text{s}$ (Core-Core)	100 A
Nominal pulse current $I_{\text{an}}$ (10/1000) $\mu\text{s}$ (Core-Earth)	200 A (in total)
Lightning test current (10/350) $\mu\text{s}$ , peak value $I_{\text{imp}}$	1 kA (per path)
Output voltage limitation at 1 kV/ $\mu\text{s}$ (Core-Core) spike	$\leq 40$ V
Output voltage limitation at 1 kV/ $\mu\text{s}$ (Core-Earth) spike	$\leq 600$ V
Output voltage limitation at 1 kV/ $\mu\text{s}$ (Core-Core) static	$\leq 40$ V
Output voltage limitation at 1 kV/ $\mu\text{s}$ (Core-Earth) static	$\leq 600$ V
Residual voltage at $I_n$ , (conductor-conductor)	$\leq 40$ V
Protection level $U_p$ (Core-Core)	$\leq 60$ V (C2 (10 kV/5 kA)) $\leq 40$ V (stat.)
Protection level $U_p$ (Core-Earth)	$\leq 600$ V (C2 (10 kV/5 kA))
Response time $t_A$ (Core-Core)	$\leq 1$ ns
Response time $t_A$ (Core-Earth)	$\leq 100$ ns
Input attenuation aE, sym.	1 dB (< 400 kHz)
Cut-off frequency $f_g$ (3 dB), sym. in 50 Ohm system	3 MHz
Cut-off frequency $f_g$ (3 dB), sym. in 150 Ohm system	1 MHz
Capacity (Core-Core)	4 nF
Capacity (Core-Earth)	2 pF
Resistance in series	6.6 $\Omega$ $\pm 20$ % (per path) 6.6 $\Omega$
Max. required back-up fuse	370 mA
Surge carrying capacity in acc. with IEC 61643-21 (Core-Core)	C2 (10 kV/5 kA)

TT-ST-M-2-PE-24DC Order No.: 2858904  
http://eshop.phoenixcontact.de/phoenix/treeViewClick.do?UID=2858904

Surge carrying capacity in acc. with IEC 61643-21 (Core-Earth)	C2 (10 kV/5 kA)
	D1 (1 kA)

#### Connection data

Type of connection	Spring-cage connection
Connection type IN	Spring-cage
Connection type OUT	Spring-cage
Conductor cross section stranded min.	0.5 mm <sup>2</sup>
Conductor cross section stranded max.	2.5 mm <sup>2</sup>
Conductor cross section solid min.	0.5 mm <sup>2</sup>
Conductor cross section solid max.	4 mm <sup>2</sup>
Conductor cross section AWG/kcmil min.	24
Conductor cross section AWG/kcmil max	12

#### Connection, protective circuit

Standards/regulations	IEC 61643-21
-----------------------	--------------

#### Certificates / Approvals

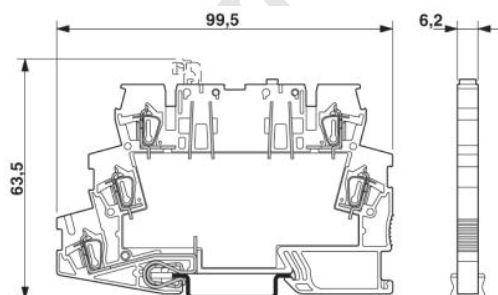


Certification

GOST

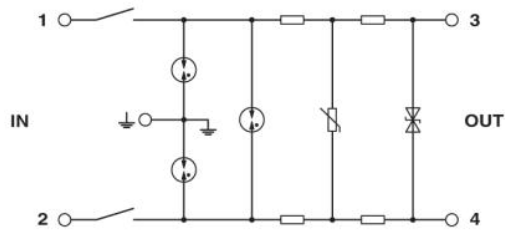
#### Diagrams/Drawings

Dimensioned drawing



TT-ST-M-2-PE-24DC Order No.: 2858904  
<http://eshop.phoenixcontact.de/phoenix/treeViewClick.do?UID=2858904>

Circuit diagram



onlinecomponents.com

TT-ST-M-2-PE-24DC Order No.: 2858904  
<http://eshop.phoenixcontact.de/phoenix/treeViewClick.do?UID=2858904>

---

**Address**

PHOENIX CONTACT Deutschland GmbH  
Flachsmarktstr. 8  
32825 Blomberg, Germany  
Phone +49 5235 3 12000  
Fax +49 5235 3 41200  
<http://www.phoenixcontact.de>



© 2010 Phoenix Contact  
Technical modifications reserved;

onlinecomponents.com