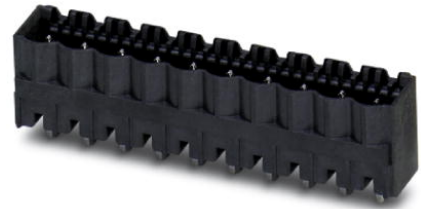




Extract from the online catalog

CCVA 2,5/10-G-5,08 P26THR

Order No.: 1955934




<http://eshop.phoenixcontact.de/phoenix/treeViewClick.do?UID=1955934>

Header, Nominal current: 12 A, Nom. voltage: 250 V, Pitch: 5.08 mm, Number of positions: 10, Color: black, Assembly: SMD/THT/THR

Commercial data	
EAN	4017918926694
Pack	50 pcs.
Customs tariff	85366990
Weight/Piece	0.004146 KG
Catalog page information	Page 237 (CC-2009)

Product notes

WEEE/RoHS-compliant since: 01/01/2003



<http://www.download.phoenixcontact.com>
Please note that the data given here has been taken from the online catalog. For comprehensive information and data, please refer to the user documentation. The General Terms and Conditions of Use apply to Internet downloads.

Technical data

Dimensions / positions	
Length	8.6 mm
Pitch	5.08 mm
Dimension a	45.72 mm
Number of positions	10
Pin dimensions	1 x 1 mm

CCVA 2,5/10-G-5,08 P26THR Order No.: 1955934
<http://eshop.phoenixcontact.de/phoenix/treeViewClick.do?UID=1955934>

Pin spacing	5.08 mm
Hole diameter	1.6 mm

Technical data

Insulating material group	IIIa
Rated surge voltage (III/3)	4 kV
Rated surge voltage (III/2)	4 kV
Rated surge voltage (II/2)	4 kV
Rated voltage (III/2)	320 V
Rated voltage (II/2)	400 V
Connection in acc. with standard	EN-VDE
Nominal current I_N	12 A
Nominal voltage U_N	250 V
Maximum load current	12 A (per position)
Insulating material	LCP
Inflammability class acc. to UL 94	V0

Certificates / Approvals



Certification CUL, UL

CUL

Nominal voltage U_N	300 V
Nominal current I_N	10 A

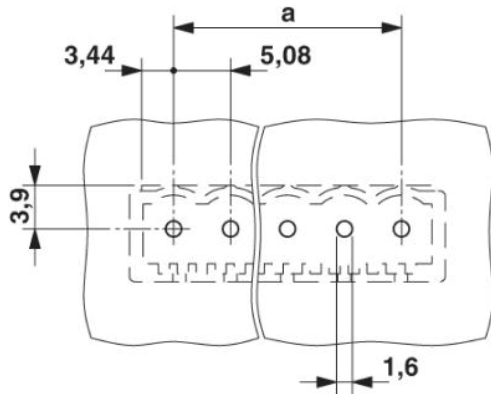
UL

Nominal voltage U_N	300 V
Nominal current I_N	10 A

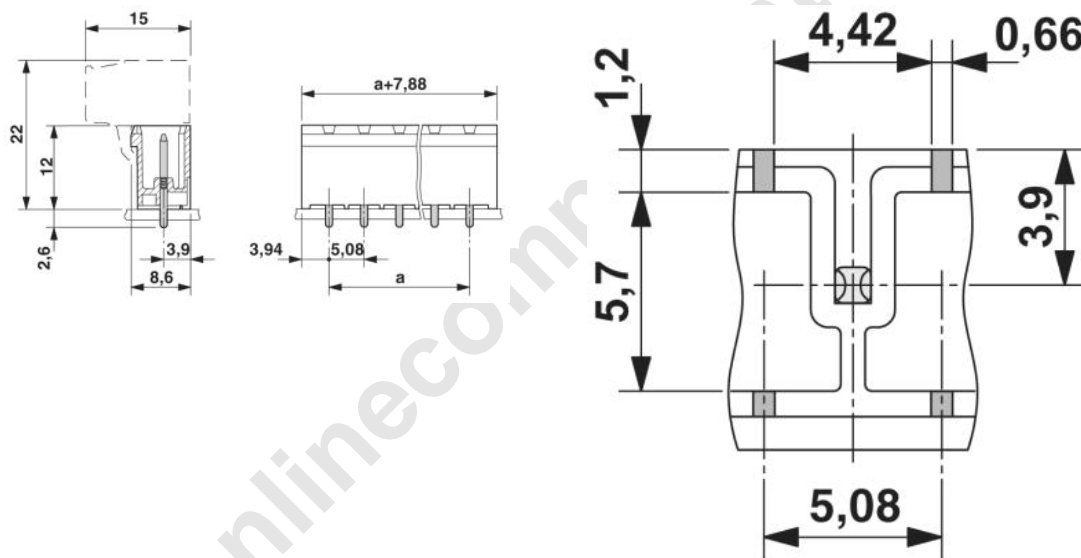
CCVA 2,5/10-G-5,08 P26THR Order No.: 1955934
<http://eshop.phoenixcontact.de/phoenix/treeViewClick.do?UID=1955934>

Drawings

Drilling diagram



Dimensioned drawing



Bottom view, free space for solder paste, 0.55 mm deep

CCVA 2,5/10-G-5,08 P26THR Order No.: 1955934
<http://eshop.phoenixcontact.de/phoenix/treeViewClick.do?UID=1955934>

Address

PHOENIX CONTACT GmbH & Co. KG
Flachsmarktstr. 8
32825 Blomberg, Germany
Phone +49 5235 3 00
Fax +49 5235 3 41200
<http://www.phoenixcontact.de>



© 2009 Phoenix Contact
Technical modifications reserved;

onlinecomponents.com