

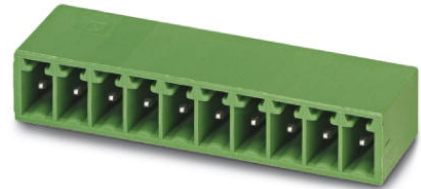


Extract from the online catalog

# EMC 1,5/16-G-3,81

Order No.: 1897940

The figure shows a 10-position version of the product



<http://eshop.phoenixcontact.de/phoenix/treeViewClick.do?UID=1897940>

Header, Nominal current: 8 A, Nom. voltage: 160 V, Pitch: 3.81 mm, Number of positions: 16, Color: green, Assembly: Press-in

| Commercial data          |                    |
|--------------------------|--------------------|
| EAN                      | 4017918166526      |
| Pack                     | 50 pcs.            |
| Customs tariff           | 85369010           |
| Weight/Piece             | 0.00539 KG         |
| Catalog page information | Page 172 (CC-2009) |

### Product notes

WEEE/RoHS-compliant since: 01/01/2003



<http://www.download.phoenixcontact.com>  
Please note that the data given here has been taken from the online catalog. For comprehensive information and data, please refer to the user documentation. The General Terms and Conditions of Use apply to Internet downloads.

## Technical data

| Dimensions / positions |              |
|------------------------|--------------|
| Length                 | 10.7 mm      |
| Pitch                  | 3.81 mm      |
| Dimension a            | 57.15 mm     |
| Number of positions    | 16           |
| Pin dimensions         | 0,8 x 0,8 mm |

EMC 1,5/16-G-3,81 Order No.: 1897940  
http://eshop.phoenixcontact.de/phoenix/treeViewClick.do?UID=1897940

|                                    |         |
|------------------------------------|---------|
| Hole diameter                      | 1.45 mm |
| <b>Technical data</b>              |         |
| Insulating material group          | IIIa    |
| Rated surge voltage (III/3)        | 2.5 kV  |
| Rated surge voltage (III/2)        | 2.5 kV  |
| Rated surge voltage (II/2)         | 2.5 kV  |
| Rated voltage (III/2)              | 160 V   |
| Rated voltage (II/2)               | 250 V   |
| Connection in acc. with standard   | EN-VDE  |
| Nominal current $I_N$              | 8 A     |
| Nominal voltage $U_N$              | 160 V   |
| Maximum load current               | 8 A     |
| Insulating material                | PBT     |
| Inflammability class acc. to UL 94 | V0      |

#### Certificates / Approvals



Certification CUL, GOST, UL

#### CUL

|                       |       |
|-----------------------|-------|
| Nominal voltage $U_N$ | 300 V |
| Nominal current $I_N$ | 8 A   |

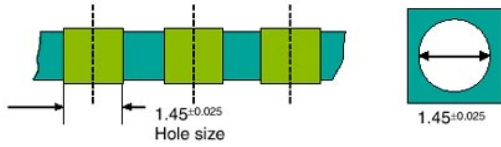
#### UL

|                       |       |
|-----------------------|-------|
| Nominal voltage $U_N$ | 300 V |
| Nominal current $I_N$ | 8 A   |

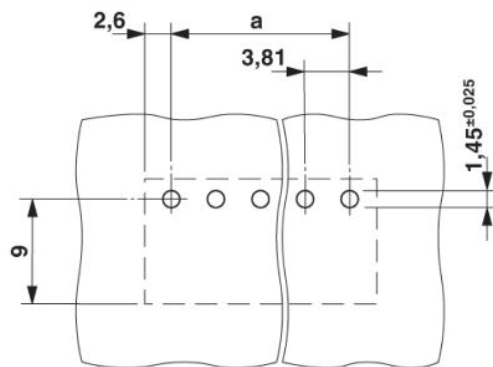
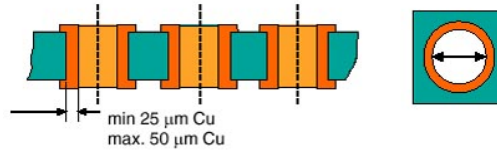
Diagrams/Drawings

Drilling plan/solder pad geometry

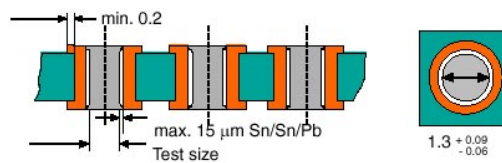
**Bore hole in the basic material,**  
mostly epoxy glass fabric FR4 or EP-GC



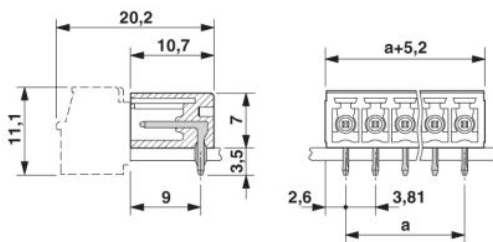
**Bore hole with Cu ferrule**



**Plated-through bore hole with Sn/SnPb**



Dimensioned drawing



EMC 1,5/16-G-3,81 Order No.: 1897940  
<http://eshop.phoenixcontact.de/phoenix/treeViewClick.do?UID=1897940>

---

**Address**

PHOENIX CONTACT Deutschland GmbH  
Flachsmarktstr. 8  
32825 Blomberg, Germany  
Phone +49 5235 3 12000  
Fax +49 5235 3 41200  
<http://www.phoenixcontact.de>



© 2010 Phoenix Contact  
Technical modifications reserved;

onlinecomponents.com