

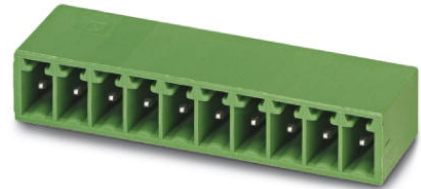


Extract from the online catalog

EMC 1,5/ 2-G-3,81

Order No.: 1897801

The figure shows a 10-position version of the product



<http://eshop.phoenixcontact.de/phoenix/treeViewClick.do?UID=1897801>

Header, Nominal current: 8 A, Nom. voltage: 160 V, Pitch: 3.81 mm, Number of positions: 2, Color: green, Assembly: Press-in

Commercial data	
EAN	4017918166380
Pack	50 pcs.
Customs tariff	85369010
Weight/Piece	0.000914 KG
Catalog page information	Page 172 (CC-2009)

Product notes

WEEE/RoHS-compliant since:
01/01/2003



<http://www.download.phoenixcontact.com>
Please note that the data given here has been taken from the online catalog. For comprehensive information and data, please refer to the user documentation. The General Terms and Conditions of Use apply to Internet downloads.

Technical data

Dimensions / positions	
Pitch	3.81 mm
Dimension a	3.81 mm
Number of positions	2
Pin dimensions	0,8 x 0,8 mm
Hole diameter	1.45 mm

Technical data

Insulating material group	IIIa
Rated surge voltage (III/3)	2.5 kV
Rated surge voltage (III/2)	2.5 kV
Rated surge voltage (II/2)	2.5 kV
Rated voltage (III/2)	160 V
Rated voltage (II/2)	250 V
Connection in acc. with standard	EN-VDE
Nominal current I_N	8 A
Nominal voltage U_N	160 V
Maximum load current	8 A
Insulating material	PBT
Inflammability class acc. to UL 94	V0

Certificates / Approvals



Certification CUL, GOST, UL

CUL

Nominal voltage U_N	300 V
Nominal current I_N	8 A

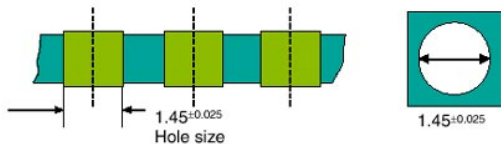
UL

Nominal voltage U_N	300 V
Nominal current I_N	8 A

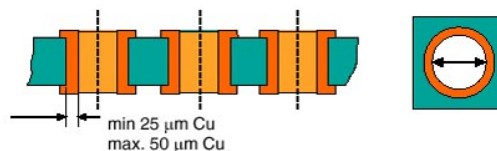
Drawings

Drilling diagram

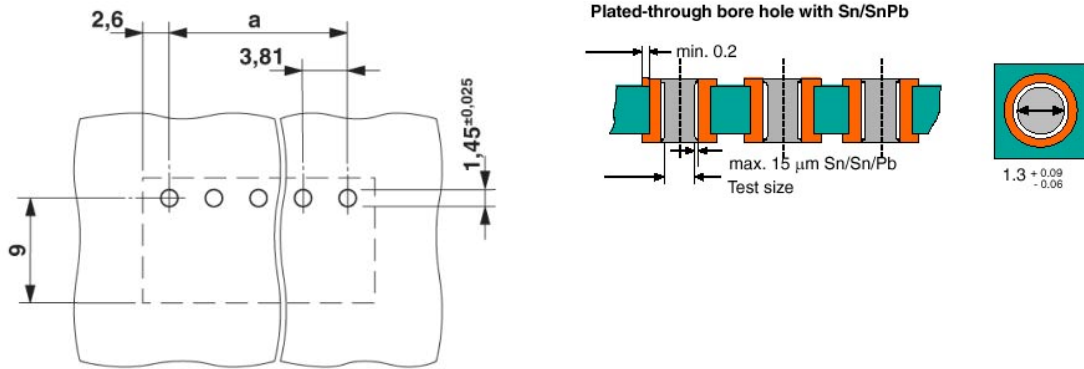
Bore hole in the basic material,
mostly epoxy glass fabric FR4 or EP-GC



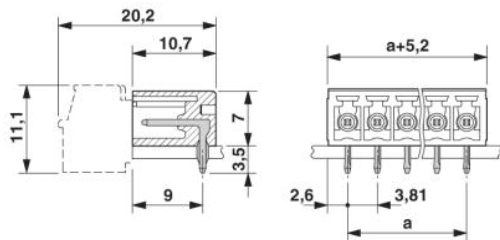
Bore hole with Cu ferrule



EMC 1,5/ 2-G-3,81 Order No.: 1897801
<http://eshop.phoenixcontact.de/phoenix/treeViewClick.do?UID=1897801>



Dimensioned drawing



onlinecomponents.com

EMC 1,5/ 2-G-3,81 Order No.: 1897801
<http://eshop.phoenixcontact.de/phoenix/treeViewClick.do?UID=1897801>

Address

PHOENIX CONTACT GmbH & Co. KG
Flachsmarktstr. 8
32825 Blomberg, Germany
Phone +49 5235 3 00
Fax +49 5235 3 41200
<http://www.phoenixcontact.de>



© 2009 Phoenix Contact
Technical modifications reserved;

onlinecomponents.com