

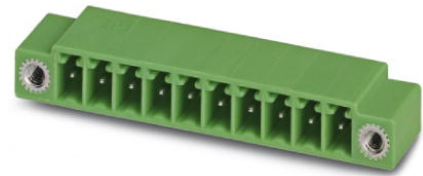


Extract from the online catalog

EMC 1,5/10-GF-3,81

Order No.: 1897021

The figure shows a 10-position version of the product



<http://eshop.phoenixcontact.de/phoenix/treeViewClick.do?UID=1897021>

Header, Nominal current: 8 A, Nom. voltage: 160 V, Pitch: 3.81 mm, Number of positions: 10, Color: green, Assembly: Press-in

Commercial data	
EAN	4017918166168
Pack	50 pcs.
Customs tariff	85369010
Weight/Piece	0.004395 KG
Catalog page information	Page 173 (CC-2009)

Product notes

WEEE/RoHS-compliant since: 01/01/2003

<http://www.download.phoenixcontact.com>
Please note that the data given here has been taken from the online catalog. For comprehensive information and data, please refer to the user documentation. The General Terms and Conditions of Use apply to Internet downloads.

Technical data

Dimensions / positions	
Length	10.7 mm
Pitch	3.81 mm
Dimension a	34.29 mm
Number of positions	10
Pin dimensions	0,8 x 0,8 mm

EMC 1,5/10-GF-3,81 Order No.: 1897021
http://eshop.phoenixcontact.de/phoenix/treeViewClick.do?UID=1897021

Hole diameter	1.45 mm
Technical data	
Insulating material group	IIIa
Rated surge voltage (III/3)	2.5 kV
Rated surge voltage (III/2)	2.5 kV
Rated surge voltage (II/2)	2.5 kV
Rated voltage (III/2)	160 V
Rated voltage (II/2)	250 V
Connection in acc. with standard	EN-VDE
Nominal current I_N	8 A
Nominal voltage U_N	160 V
Maximum load current	8 A
Insulating material	PBT
Inflammability class acc. to UL 94	V0

Certificates / Approvals



Certification CUL, GOST, UL

CUL

Nominal voltage U_N	300 V
Nominal current I_N	8 A

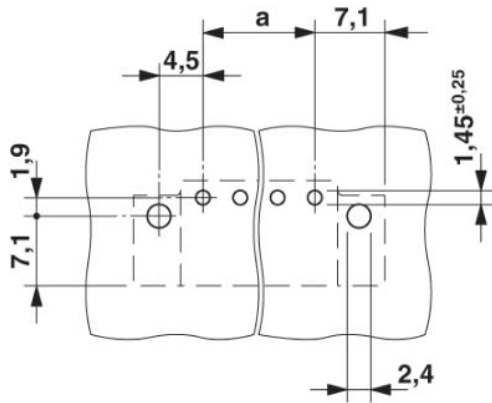
UL

Nominal voltage U_N	300 V
Nominal current I_N	8 A

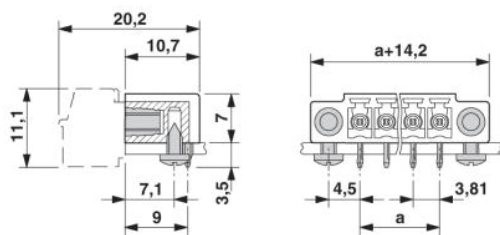
EMC 1,5/10-GF-3,81 Order No.: 1897021
<http://eshop.phoenixcontact.de/phoenix/treeViewClick.do?UID=1897021>

Diagrams/Drawings

Drilling plan/solder pad geometry



Dimensioned drawing



EMC 1,5/10-GF-3,81 Order No.: 1897021
<http://eshop.phoenixcontact.de/phoenix/treeViewClick.do?UID=1897021>

Address

PHOENIX CONTACT Deutschland GmbH
Flachmarktstr. 8
32825 Blomberg, Germany
Phone +49 5235 3 12000
Fax +49 5235 3 41200
<http://www.phoenixcontact.de>



© 2010 Phoenix Contact
Technical modifications reserved;

onlinecomponents.com