

UT 2,5-MTD RD - Feed-through terminal block



1099904

<https://www.phoenixcontact.com/pc/products/1099904>

Please be informed that the data shown in this PDF document is generated from our online catalog. Please find the complete data in the user documentation. Our general terms of use for downloads are valid.



Feed-through terminal block, nom. voltage: 800 V, nominal current: 24 A, connection method: Screw connection, Rated cross section: 2.5 mm², cross section: 0.14 mm² - 4 mm², mounting: NS 35/7,5, NS 35/15, color: red

Your advantages

- The consistent labeling and bridging of terminal blocks is an advantage
- Feed-through and PE terminal blocks enable terminal strips of the same shape to be configured with disconnect and knife disconnect terminal blocks

Commercial data

Item number	1099904
Packing unit	50 pc
Minimum order quantity	50 pc
Product key	BE2Z2X
GTIN	4055626950440
Weight per piece (including packing)	9.63 g
Weight per piece (excluding packing)	8.734 g
Customs tariff number	85369010
Country of origin	PL

UT 2,5-MTD RD - Feed-through terminal block



1099904

<https://www.phoenixcontact.com/pc/products/1099904>

Technical data

Product properties

Product type	Disconnect terminal block
Number of connections	2
Number of rows	1
Potentials	1

Insulation characteristics

Overvoltage category	III
Degree of pollution	3

Electrical properties

Rated surge voltage	8 kV
Maximum power dissipation for nominal condition	0.77 W

Connection data

Number of connections per level	2
Nominal cross section	2.5 mm ²
Rated cross section AWG	12

Level 1 above 1 below 1

Connection method	Screw connection
Screw thread	M3
Tightening torque	0.5 ... 0.6 Nm
Stripping length	9 mm
Internal cylindrical gage	A3
Connection in acc. with standard	IEC 60947-7-1
Conductor cross-section rigid	0.14 mm ² ... 4 mm ²
Cross section AWG	26 ... 12 (converted acc. to IEC)
Conductor cross-section flexible	0.14 mm ² ... 4 mm ²
Conductor cross-section, flexible [AWG]	26 ... 12 (converted acc. to IEC)
Conductor cross-section flexible (ferrule without plastic sleeve)	0.14 mm ² ... 2.5 mm ²
Flexible conductor cross-section (ferrule with plastic sleeve)	0.14 mm ² ... 2.5 mm ²
2 conductors with same cross section, solid	0.14 mm ² ... 1.5 mm ²
2 conductors with same cross section, flexible	0.14 mm ² ... 1.5 mm ²
2 conductors with same cross section, flexible, with ferrule without plastic sleeve	0.14 mm ² ... 1.5 mm ²
2 conductors with the same cross section, flexible, with TWIN ferrule with plastic sleeve	0.5 mm ² ... 1.5 mm ²
Nominal current	24 A
Maximum load current	32 A (with 4 mm ² conductor cross-section)
Nominal voltage	800 V
Nominal cross section	2.5 mm ²

UT 2,5-MTD RD - Feed-through terminal block



1099904

<https://www.phoenixcontact.com/pc/products/1099904>

Dimensions

Width	5.2 mm
End cover width	2.2 mm
Height	57.8 mm
Depth on NS 35/7,5	47.5 mm
Depth on NS 35/15	55 mm

Material specifications

Color	red (RAL 3001)
Flammability rating according to UL 94	V0
Insulating material group	I
Insulating material	PA
Static insulating material application in cold	-60 °C
Temperature index of insulation material (DIN EN 60216-1 (VDE 0304-21))	125 °C
Relative insulation material temperature index (Elec., UL 746 B)	125 °C

Electrical tests

Surge voltage test

Test voltage setpoint	9.8 kV
Result	Test passed

Temperature-rise test

Requirement temperature-rise test	Increase in temperature \leq 45 K
Result	Test passed
Short-time withstand current 2.5 mm ²	0.3 kA
Result	Test passed

Power-frequency withstand voltage

Test voltage setpoint	2 kV
Result	Test passed

Mechanical properties

Mechanical data

Open side panel	Yes
-----------------	-----

Mechanical tests

Mechanical strength

Result	Test passed
--------	-------------

Attachment on the carrier

DIN rail/fixing support	NS 35
Result	Test passed

UT 2,5-MTD RD - Feed-through terminal block



1099904

<https://www.phoenixcontact.com/pc/products/1099904>

Test for conductor damage and slackening

Rotation speed	10 (+/- 2) rpm
Revolutions	135
Conductor cross-section/weight	0.14 mm ² / 0.2 kg
	2.5 mm ² / 0.7 kg
	4 mm ² / 0.9 kg
Result	Test passed

Environmental and real-life conditions

Needle-flame test

Time of exposure	30 s
Result	Test passed

Ambient conditions

Ambient temperature (operation)	-60 °C ... 110 °C (Operating temperature range incl. self-heating; for max. short-term operating temperature, see RTI Elec.)
Ambient temperature (storage/transport)	-25 °C ... 60 °C (for a short time, not exceeding 24 h, -60 °C to +70 °C)
Ambient temperature (assembly)	-5 °C ... 70 °C
Ambient temperature (actuation)	-5 °C ... 70 °C
Permissible humidity (operation)	20 % ... 90 %
Permissible humidity (storage/transport)	30 % ... 70 %

Standards and regulations

Connection in acc. with standard	IEC 60947-7-1
----------------------------------	---------------

Mounting

Mounting type	NS 35/7,5
	NS 35/15

UT 2,5-MTD RD - Feed-through terminal block



1099904

<https://www.phoenixcontact.com/pc/products/1099904>

Drawings

Circuit diagram



UT 2,5-MTD RD - Feed-through terminal block



1099904

<https://www.phoenixcontact.com/pc/products/1099904>

Classifications

ECLASS

ECLASS-13.0

27250108

ETIM

ETIM 9.0

EC000902

UNSPSC

UNSPSC 21.0

39121400

UT 2,5-MTD RD - Feed-through terminal block



1099904

<https://www.phoenixcontact.com/pc/products/1099904>

Environmental product compliance

EU RoHS

Fulfills EU RoHS substance requirements	Yes
Exemption	6(c)

China RoHS

Environment friendly use period (EFUP)	EFUP-50
	An article-related China RoHS declaration table can be found in the download area for the respective article under "Manufacturer declaration". For all articles with EFUP-E, no China RoHS declaration table issued and required.

EU REACH SVHC


REACH candidate substance (CAS No.)	Lead(CAS: 7439-92-1)
SCIP	8a2c57e4-4448-40b3-a8fb-d78a82b709be

UT 2,5-MTD RD - Feed-through terminal block

1099904

<https://www.phoenixcontact.com/pc/products/1099904>

Accessories

 Note: Applying some accessories below might limit this product.


FBS 2-5 - Plug-in bridge

3030161

<https://www.phoenixcontact.com/pc/products/3030161>



Plug-in bridge, pitch: 5.2 mm, number of positions: 2, length: 23 mm, color: red

 Max. current carrying capacity: 24 A

FBS 3-5 - Plug-in bridge

3030174

<https://www.phoenixcontact.com/pc/products/3030174>



Plug-in bridge, pitch: 5.2 mm, number of positions: 3, length: 23 mm, color: red

 Max. current carrying capacity: 24 A

UT 2,5-MTD RD - Feed-through terminal block

1099904

<https://www.phoenixcontact.com/pc/products/1099904>




FBS 4-5 - Plug-in bridge

3030187

<https://www.phoenixcontact.com/pc/products/3030187>



Plug-in bridge, pitch: 5.2 mm, number of positions: 4, length: 23 mm, color: red

 Max. current carrying capacity: 24 A


FBS 5-5 - Plug-in bridge

3030190

<https://www.phoenixcontact.com/pc/products/3030190>



Plug-in bridge, pitch: 5.2 mm, number of positions: 5, length: 23 mm, color: red

 Max. current carrying capacity: 24 A

UT 2,5-MTD RD - Feed-through terminal block

1099904

<https://www.phoenixcontact.com/pc/products/1099904>



FBS 10-5 - Plug-in bridge

3030213

<https://www.phoenixcontact.com/pc/products/3030213>



Plug-in bridge, pitch: 5.2 mm, number of positions: 10, length: 23 mm, color: red

 Max. current carrying capacity: 24 A

FBS 20-5 - Plug-in bridge

3030226

<https://www.phoenixcontact.com/pc/products/3030226>



Plug-in bridge, pitch: 5.2 mm, number of positions: 20, color: red

 Max. current carrying capacity: 24 A

UT 2,5-MTD RD - Feed-through terminal block

1099904

<https://www.phoenixcontact.com/pc/products/1099904>



FBS 50-5 - Plug-in bridge

3038930

<https://www.phoenixcontact.com/pc/products/3038930>



Plug-in bridge, pitch: 5.2 mm, number of positions: 50, color: red

 Max. current carrying capacity: 24 A


FBSR 2-5 - Plug-in bridge

3033702

<https://www.phoenixcontact.com/pc/products/3033702>



Plug-in bridge, pitch: 5.2 mm, number of positions: 2, color: red

 Max. current carrying capacity: 17.5 A

UT 2,5-MTD RD - Feed-through terminal block

1099904

<https://www.phoenixcontact.com/pc/products/1099904>


FBSR 3-5 - Plug-in bridge

3001591

<https://www.phoenixcontact.com/pc/products/3001591>



Plug-in bridge, pitch: 5.2 mm, number of positions: 3, color: red

 Max. current carrying capacity: 17.5 A

FBSR 4-5 - Plug-in bridge

3001592

<https://www.phoenixcontact.com/pc/products/3001592>



Plug-in bridge, pitch: 5.2 mm, number of positions: 4, color: red

 Max. current carrying capacity: 17.5 A

UT 2,5-MTD RD - Feed-through terminal block

1099904

<https://www.phoenixcontact.com/pc/products/1099904>




FBSR 5-5 - Plug-in bridge

3001593

<https://www.phoenixcontact.com/pc/products/3001593>

Plug-in bridge, pitch: 5.2 mm, number of positions: 5, color: red



 Max. current carrying capacity: 17.5 A


FBSR 10-5 - Plug-in bridge

3033710

<https://www.phoenixcontact.com/pc/products/3033710>

Plug-in bridge, pitch: 5.2 mm, number of positions: 10, color: red



 Max. current carrying capacity: 17.5 A

UT 2,5-MTD RD - Feed-through terminal block

1099904

<https://www.phoenixcontact.com/pc/products/1099904>

FBS 2-5 BU - Plug-in bridge

3036877

<https://www.phoenixcontact.com/pc/products/3036877>



Plug-in bridge, pitch: 5.2 mm, number of positions: 2, color: blue

 Max. current carrying capacity: 24 A


FBS 3-5 BU - Plug-in bridge

3036880

<https://www.phoenixcontact.com/pc/products/3036880>



Plug-in bridge, pitch: 5.2 mm, number of positions: 3, color: blue

 Max. current carrying capacity: 24 A

UT 2,5-MTD RD - Feed-through terminal block

1099904

<https://www.phoenixcontact.com/pc/products/1099904>



FBS 4-5 BU - Plug-in bridge

3036893

<https://www.phoenixcontact.com/pc/products/3036893>



Plug-in bridge, pitch: 5.2 mm, number of positions: 4, color: blue

 Max. current carrying capacity: 24 A

FBS 5-5 BU - Plug-in bridge

3036903

<https://www.phoenixcontact.com/pc/products/3036903>



Plug-in bridge, pitch: 5.2 mm, number of positions: 5, color: blue

 Max. current carrying capacity: 24 A

UT 2,5-MTD RD - Feed-through terminal block

1099904

<https://www.phoenixcontact.com/pc/products/1099904>




FBS 10-5 BU - Plug-in bridge

3036916

<https://www.phoenixcontact.com/pc/products/3036916>



Plug-in bridge, pitch: 5.2 mm, number of positions: 10, color: blue

 Max. current carrying capacity: 24 A


FBS 20-5 BU - Plug-in bridge

3036929

<https://www.phoenixcontact.com/pc/products/3036929>



Plug-in bridge, pitch: 5.2 mm, number of positions: 20, color: blue

 Max. current carrying capacity: 24 A

UT 2,5-MTD RD - Feed-through terminal block

1099904

<https://www.phoenixcontact.com/pc/products/1099904>



FBS 50-5 BU - Plug-in bridge

3032114

<https://www.phoenixcontact.com/pc/products/3032114>



Plug-in bridge, pitch: 5.2 mm, number of positions: 50, color: blue

 Max. current carrying capacity: 24 A

RB ST 10-(2,5/4) - Reducing bridge

3030873

<https://www.phoenixcontact.com/pc/products/3030873>



Reducing bridge, pitch: 10 mm, number of positions: 2, length: 36 mm, color: red

 Max. current carrying capacity: 35 A

UT 2,5-MTD RD - Feed-through terminal block

1099904

<https://www.phoenixcontact.com/pc/products/1099904>


RB UT 10-(2,5/4) - Reducing bridge

3047060

<https://www.phoenixcontact.com/pc/products/3047060>



Reducing bridge, pitch: 10.2 mm, number of positions: 2, length: 29 mm, color: red

 Max. current carrying capacity: 40 A


RB UT 35-(2,5/4) - Reducing bridge

3047277

<https://www.phoenixcontact.com/pc/products/3047277>



Reducing bridge, pitch: 11 mm, number of positions: 2, color: red

 Max. current carrying capacity: 40 A

UT 2,5-MTD RD - Feed-through terminal block

1099904

<https://www.phoenixcontact.com/pc/products/1099904>


RB UT 16-(2,5/4) - Reducing bridge

3047073

<https://www.phoenixcontact.com/pc/products/3047073>



Reducing bridge, pitch: 11 mm, number of positions: 2, length: 31 mm, color: red

 Max. current carrying capacity: 40 A


RB UT 6-(2,5/4) - Reducing bridge

3047251

<https://www.phoenixcontact.com/pc/products/3047251>



Reducing bridge, pitch: 9.5 mm, number of positions: 2, length: 25 mm, color: red

 Max. current carrying capacity: 40 A

UT 2,5-MTD RD - Feed-through terminal block

1099904

<https://www.phoenixcontact.com/pc/products/1099904>

D-UT 2,5/4-TWIN - End cover

3047141

<https://www.phoenixcontact.com/pc/products/3047141>

End cover, depth: 39.8 mm, width: 2.2 mm, height: 56.8 mm, color: gray



ATP-UT-TWIN - Partition plate

3047183

<https://www.phoenixcontact.com/pc/products/3047183>

Partition plate, depth: 52.5 mm, width: 2.2 mm, height: 62.1 mm, color: gray



UT 2,5-MTD RD - Feed-through terminal block



1099904

<https://www.phoenixcontact.com/pc/products/1099904>

P-CO 2-5 R47K - Component connector

3032447

<https://www.phoenixcontact.com/pc/products/3032447>



Component connector, with 47 kOhm resistance for wire-break monitoring, pitch: 5.2 mm, depth: 34.8 mm, width: 4.1 mm, height: 8.9 mm, number of positions: 2, color: black

D-UT 2,5/4-TWIN BU - End cover

3047142

<https://www.phoenixcontact.com/pc/products/3047142>



End cover, depth: 47.5 mm, width: 2.2 mm, height: 57.8 mm, color: blue

UT 2,5-MTD RD - Feed-through terminal block



1099904

<https://www.phoenixcontact.com/pc/products/1099904>

NS 35/ 7,5 PERF 2000MM - DIN rail perforated

0801733

<https://www.phoenixcontact.com/pc/products/0801733>



DIN rail perforated, Pack of 25 (50 m), acc. to EN 60715, material: Steel, galvanized, passivated with a thick layer, Standard profile, color: silver

NS 35/ 7,5 UNPERF 2000MM - DIN rail, unperforated

0801681

<https://www.phoenixcontact.com/pc/products/0801681>



DIN rail, unperforated, Pack of 25 (50 m), acc. to EN 60715, material: Steel, galvanized, passivated with a thick layer, Standard profile, color: silver-colored

UT 2,5-MTD RD - Feed-through terminal block



1099904

<https://www.phoenixcontact.com/pc/products/1099904>

NS 35/ 7,5 WH PERF 2000MM - DIN rail perforated

1204119

<https://www.phoenixcontact.com/pc/products/1204119>



DIN rail perforated, Pack of 25 (50 m), acc. to EN 60715, material: Steel, galvanized, white passivated, Standard profile, color: silver-colored

NS 35/ 7,5 WH UNPERF 2000MM-VPE 10 - DIN rail, unperforated

1204122

<https://www.phoenixcontact.com/pc/products/1204122>



DIN rail, unperforated, Pack of 10 (20 m), acc. to EN 60715, material: Steel, galvanized, white passivated, Standard profile, color: silver-colored

UT 2,5-MTD RD - Feed-through terminal block

1099904

<https://www.phoenixcontact.com/pc/products/1099904>



NS 35/ 7,5 AL UNPERF 2000MM - DIN rail, unperforated

0801704

<https://www.phoenixcontact.com/pc/products/0801704>



DIN rail, unperforated, Pack of 25 (50 m), acc. to EN 60715, material: Aluminum, uncoated, Standard profile, color: silver-colored

NS 35/ 7,5 ZN PERF 2000MM - DIN rail perforated

1206421

<https://www.phoenixcontact.com/pc/products/1206421>



DIN rail perforated, Pack of 25 (50 m), acc. to EN 60715, material: Steel, galvanized, Standard profile, color: silver-colored

UT 2,5-MTD RD - Feed-through terminal block

1099904

<https://www.phoenixcontact.com/pc/products/1099904>



NS 35/ 7,5 ZN UNPERF 2000MM - DIN rail, unperforated

1206434

<https://www.phoenixcontact.com/pc/products/1206434>



DIN rail, unperforated, Pack of 25 (50 m), acc. to EN 60715, material: Steel, galvanized, Standard profile, color: silver-colored

NS 35/ 7,5 CU UNPERF 2000MM-VPE 10 - DIN rail, unperforated

0801762

<https://www.phoenixcontact.com/pc/products/0801762>



DIN rail, unperforated, Pack of 10 (20 m), acc. to EN 60715, material: Copper, uncoated, Standard profile, color: copper-colored

UT 2,5-MTD RD - Feed-through terminal block

1099904

<https://www.phoenixcontact.com/pc/products/1099904>



NS 35/ 7,5 CAP - End cap

1206560

<https://www.phoenixcontact.com/pc/products/1206560>

DIN rail end piece, for DIN rail NS 35/7.5



NS 35/15 PERF 2000MM - DIN rail perforated

1201730

<https://www.phoenixcontact.com/pc/products/1201730>



DIN rail perforated, Pack of 25 (50 m), similar to EN 60715, material: Steel, galvanized, passivated with a thick layer, Standard profile, color: silver-colored

UT 2,5-MTD RD - Feed-through terminal block



1099904

<https://www.phoenixcontact.com/pc/products/1099904>

NS 35/15 UNPERF 2000MM - DIN rail, unperforated

1201714

<https://www.phoenixcontact.com/pc/products/1201714>



DIN rail, unperforated, Pack of 25 (50 m), similar to EN 60715, material: Steel, galvanized, passivated with a thick layer, Standard profile, color: silver-colored

NS 35/15 WH PERF 2000MM - DIN rail perforated

0806602

<https://www.phoenixcontact.com/pc/products/0806602>



DIN rail perforated, Pack of 25 (50 m), similar to EN 60715, material: Steel, galvanized, white passivated, Standard profile, color: white

UT 2,5-MTD RD - Feed-through terminal block

1099904

<https://www.phoenixcontact.com/pc/products/1099904>



NS 35/15 WH UNPERF 2000MM-VPE 10 - DIN rail, unperforated

1204135

<https://www.phoenixcontact.com/pc/products/1204135>



DIN rail, unperforated, Pack of 10 (20 m), similar to EN 60715, material: Steel, galvanized, white passivated, Standard profile, color: silver-colored

NS 35/15 AL UNPERF 2000MM - DIN rail, unperforated

1201756

<https://www.phoenixcontact.com/pc/products/1201756>



DIN rail, unperforated, similar to EN 60715, material: Aluminum, uncoated, Standard profile, color: silver-colored

UT 2,5-MTD RD - Feed-through terminal block



1099904

<https://www.phoenixcontact.com/pc/products/1099904>

NS 35/15 ZN PERF 2000MM - DIN rail perforated

1206599

<https://www.phoenixcontact.com/pc/products/1206599>



DIN rail perforated, Pack of 25 (50 m), similar to EN 60715, material: Steel, galvanized, Standard profile, color: silver-colored

NS 35/15 ZN UNPERF 2000MM - DIN rail, unperforated

1206586

<https://www.phoenixcontact.com/pc/products/1206586>



DIN rail, unperforated, Pack of 25 (50 m), similar to EN 60715, material: Steel, galvanized, Standard profile, color: silver-colored

UT 2,5-MTD RD - Feed-through terminal block

1099904

<https://www.phoenixcontact.com/pc/products/1099904>



NS 35/15 CU UNPERF 2000MM-VPE 10 - DIN rail, unperforated

1201895

<https://www.phoenixcontact.com/pc/products/1201895>



DIN rail, unperforated, Pack of 10 (20 m), similar to EN 60715, material: Copper, uncoated, Standard profile, color: copper-colored

NS 35/15 CAP - End cap

1206573

<https://www.phoenixcontact.com/pc/products/1206573>

DIN rail end piece, for DIN rail NS 35/15



UT 2,5-MTD RD - Feed-through terminal block

1099904

<https://www.phoenixcontact.com/pc/products/1099904>

NS 35/15-2,3 UNPERF 2000MM-VPE 10 - DIN rail, unperforated

1201798

<https://www.phoenixcontact.com/pc/products/1201798>



DIN rail, unperforated, Pack of 10 (20 m), acc. to EN 60715, material: Steel, galvanized, passivated with a thick layer, Standard profile 2.3 mm, color: silver-colored

ZB 5 :UNBEDRUCKT - Zack marker strip

1050004

<https://www.phoenixcontact.com/pc/products/1050004>



Zack marker strip, Strip, white, unmarked, can be labeled with: PLOTMARK, CMS-P1-PLOTTER, mounting type: latching, for terminal block width: 5.2 mm, Number of individual labels: 10, text field height: 10.5 mm, text field width: 5.1 mm

UT 2,5-MTD RD - Feed-through terminal block



1099904

<https://www.phoenixcontact.com/pc/products/1099904>

ZB 5 CUS - Zack marker strip

0824962

<https://www.phoenixcontact.com/pc/products/0824962>



Zack marker strip, can be ordered: Strip, white, labeled according to customer specifications, mounting type: snap into tall marker groove, for terminal block width: 5.2 mm, Number of individual labels: 10, text field height: 10.5 mm, text field width: 5.15 mm

ZB 5,LGS:FORTL.ZAHLEN - Zack marker strip

1050017

<https://www.phoenixcontact.com/pc/products/1050017>



Zack marker strip, Strip, white, labeled, printed horizontally: consecutive numbers 1 ... 10, 11 ... 20, etc. up to 491 ... 500, mounting type: latching, for terminal block width: 5.2 mm, Number of individual labels: 10, text field height: 10.5 mm, text field width: 5.15 mm

UT 2,5-MTD RD - Feed-through terminal block

1099904

<https://www.phoenixcontact.com/pc/products/1099904>

ZB 5,QR:FORTL.ZAHLEN - Zack marker strip

1050020

<https://www.phoenixcontact.com/pc/products/1050020>



Zack marker strip, Strip, white, Printed vertically: consecutive numbers 1 ... 10, 11 ... 20, etc. up to 491 ... 500, mounting type: latching, for terminal block width: 5.2 mm, Number of individual labels: 10, text field height: 10.5 mm, text field width: 5.15 mm

ZB 5,LGS:GLEICHE ZAHLEN - Zack marker strip

1050033

<https://www.phoenixcontact.com/pc/products/1050033>



Zack marker strip, Strip, white, labeled, can be labeled with: CMS-P1-PLOTTER, printed horizontally: Identical numbers 1 or 2, etc. up to 100, mounting type: latching, for terminal block width: 5.2 mm, Number of individual labels: 10, text field height: 10.5 mm, text field width: 5.15 mm

UT 2,5-MTD RD - Feed-through terminal block



1099904

<https://www.phoenixcontact.com/pc/products/1099904>

ZB 5,LGS:L1-N,PE - Zack marker strip

1050415

<https://www.phoenixcontact.com/pc/products/1050415>



Zack marker strip, Strip, white, labeled, horizontal: L1, L2, L3, N, PE, L1, L2, L3, N, PE, mounting type: latching, for terminal block width: 5.2 mm, Number of individual labels: 10, text field height: 10.5 mm, text field width: 5.15 mm

UC-TM 5 - Marker for terminal blocks

0818108

<https://www.phoenixcontact.com/pc/products/0818108>



Marker for terminal blocks, Sheet, white, unmarked, can be labeled with: BLUEMARK E.CARD, BLUEMARK ID COLOR, BLUEMARK ID, BLUEMARK CLED, PLOTMARK, CMS-P1-PLOTTER, mounting type: latching, for terminal block width: 5.2 mm, Number of individual labels: 96, text field height: 10.5 mm, text field width: 4.6 mm

UT 2,5-MTD RD - Feed-through terminal block



1099904

<https://www.phoenixcontact.com/pc/products/1099904>

UC-TM 5 CUS - Marker for terminal blocks

0824581

<https://www.phoenixcontact.com/pc/products/0824581>



Marker for terminal blocks, can be ordered: by sheet, white, labeled according to customer specifications, mounting type: snap into tall marker groove, for terminal block width: 5.2 mm, Number of individual labels: 96, text field height: 4.6 mm, text field width: 10.5 mm

UCT-TM 5 - Marker for terminal blocks

0828734

<https://www.phoenixcontact.com/pc/products/0828734>



Marker for terminal blocks, Sheet, white, unmarked, can be labeled with: BLUEMARK E.CARD, BLUEMARK ID COLOR, BLUEMARK ID, BLUEMARK CLED, THERMOMARK PRIME 2.0, THERMOMARK PRIME, THERMOMARK CARD 2.0, THERMOMARK CARD, TOPMARK NEO, TOPMARK LASER, mounting type: latching, for terminal block width: 5.2 mm, Number of individual labels: 72, text field height: 10.5 mm, text field width: 4.6 mm

UT 2,5-MTD RD - Feed-through terminal block

1099904

<https://www.phoenixcontact.com/pc/products/1099904>



UCT-TM 5 CUS - Marker for terminal blocks

0829595

<https://www.phoenixcontact.com/pc/products/0829595>



Marker for terminal blocks, can be ordered: by sheet, white, labeled according to customer specifications, mounting type: snap into tall marker groove, for terminal block width: 5.2 mm, Number of individual labels: 72, text field height: 10.5 mm, text field width: 4.6 mm

GBS 5-25X12 - Group marker label for terminal marking

0810588

<https://www.phoenixcontact.com/pc/products/0810588>



Group marker label, snaps onto terminal center for screw, spring-cage and quick connection terminal blocks, labeled with a 25 x 12 mm label or manually with the B-STIFT, in the foot part with ZB 5

UT 2,5-MTD RD - Feed-through terminal block

1099904

<https://www.phoenixcontact.com/pc/products/1099904>

GBS 5-25X5 - Group marker label for terminal marking

0829126

<https://www.phoenixcontact.com/pc/products/0829126>



Group marking label, can be snapped into terminal center for screw, spring-cage, push-in, and fast connection terminal blocks, can be labeled with a 24 x 4 mm label or manually using B-STIFT, in the foot part with ZB 5

STP 5-2-ZB - Marker carriers

3037643

<https://www.phoenixcontact.com/pc/products/3037643>



Marker carriers, snaps into ST 2,5 spring-cage terminal blocks, can be marked with UC-TM 5, UC-TMF 5, UCT-TM 5, UCT-TMF 5, ZB 5, or ZBF 5, gray, unmarked, mounting type: latching, text field height: 10.5 mm, text field width: 5 mm

UT 2,5-MTD RD - Feed-through terminal block



1099904

<https://www.phoenixcontact.com/pc/products/1099904>

MPS-MT - Test plug

0201744

<https://www.phoenixcontact.com/pc/products/0201744>



Test plug, with solder connection up to 1 mm² conductor cross-section, number of positions: 1, color: gray

MPS-IH WH - Insulating sleeve

0201663

<https://www.phoenixcontact.com/pc/products/0201663>

Insulating sleeve, color: white



UT 2,5-MTD RD - Feed-through terminal block

1099904

<https://www.phoenixcontact.com/pc/products/1099904>



MPS-IH RD - Insulating sleeve

0201676

<https://www.phoenixcontact.com/pc/products/0201676>

Insulating sleeve, color: red

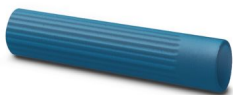


MPS-IH BU - Insulating sleeve

0201689

<https://www.phoenixcontact.com/pc/products/0201689>

Insulating sleeve, color: blue



UT 2,5-MTD RD - Feed-through terminal block

1099904

<https://www.phoenixcontact.com/pc/products/1099904>

MPS-IH YE - Insulating sleeve

0201692

<https://www.phoenixcontact.com/pc/products/0201692>

Insulating sleeve, color: yellow



MPS-IH GN - Insulating sleeve

0201702

<https://www.phoenixcontact.com/pc/products/0201702>

Insulating sleeve, color: green



UT 2,5-MTD RD - Feed-through terminal block

1099904

<https://www.phoenixcontact.com/pc/products/1099904>



MPS-IH GY - Insulating sleeve

0201728

<https://www.phoenixcontact.com/pc/products/0201728>

Insulating sleeve, color: gray



MPS-IH BK - Insulating sleeve

0201731

<https://www.phoenixcontact.com/pc/products/0201731>

Insulating sleeve, color: black



UT 2,5-MTD RD - Feed-through terminal block

1099904

<https://www.phoenixcontact.com/pc/products/1099904>

PAI-4-FIX-5/6 BU - Test adapter

3035975

<https://www.phoenixcontact.com/pc/products/3035975>



4 mm test adapter, for terminal blocks with 5.2 mm and 6.2 mm pitch

PAI-4-FIX-5/6 OG - Test adapter

3035974

<https://www.phoenixcontact.com/pc/products/3035974>



4 mm test adapter, for terminal blocks with 5.2 mm and 6.2 mm pitch

UT 2,5-MTD RD - Feed-through terminal block



1099904

<https://www.phoenixcontact.com/pc/products/1099904>

PAI-4-FIX-5/6 YE - Test adapter

3035977

<https://www.phoenixcontact.com/pc/products/3035977>



4 mm test adapter, for terminal blocks with 5.2 mm and 6.2 mm pitch

PAI-4-FIX-5/6 RD - Test adapter

3035976

<https://www.phoenixcontact.com/pc/products/3035976>



4 mm test adapter, for terminal blocks with 5.2 mm and 6.2 mm pitch

UT 2,5-MTD RD - Feed-through terminal block

1099904

<https://www.phoenixcontact.com/pc/products/1099904>

PAI-4-FIX-5/6 GN - Test adapter

3035978

<https://www.phoenixcontact.com/pc/products/3035978>



4 mm test adapter, for terminal blocks with 5.2 mm and 6.2 mm pitch

PAI-4-FIX-5/6 BK - Test adapter

3035980

<https://www.phoenixcontact.com/pc/products/3035980>



4 mm test adapter, for terminal blocks with 5.2 mm and 6.2 mm pitch

UT 2,5-MTD RD - Feed-through terminal block



1099904

<https://www.phoenixcontact.com/pc/products/1099904>

PAI-4-FIX-5/6 GY - Test adapter

3035982

<https://www.phoenixcontact.com/pc/products/3035982>



4 mm test adapter, for terminal blocks with 5.2 mm and 6.2 mm pitch

PAI-4-FIX-5/6 VT - Test adapter

3035979

<https://www.phoenixcontact.com/pc/products/3035979>



4 mm test adapter, for terminal blocks with 5.2 mm and 6.2 mm pitch

UT 2,5-MTD RD - Feed-through terminal block

1099904

<https://www.phoenixcontact.com/pc/products/1099904>

PAI-4-FIX-5/6 BN - Test adapter

3035981

<https://www.phoenixcontact.com/pc/products/3035981>



4 mm test adapter, for terminal blocks with 5.2 mm and 6.2 mm pitch

PAI-4-FIX-5/6 WH - Test adapter

3035983

<https://www.phoenixcontact.com/pc/products/3035983>



4 mm test adapter, for terminal blocks with 5.2 mm and 6.2 mm pitch

UT 2,5-MTD RD - Feed-through terminal block

1099904

<https://www.phoenixcontact.com/pc/products/1099904>



PS-5 - Test plug

3030983

<https://www.phoenixcontact.com/pc/products/3030983>



Test plug, Modular test plug, number of positions: 1, color: red

DP PS-5 - Spacer plate

3036725

<https://www.phoenixcontact.com/pc/products/3036725>



Spacer plate, depth: 29 mm, width: 5.2 mm, height: 22.4 mm, number of positions: 1, color: red

UT 2,5-MTD RD - Feed-through terminal block

1099904

<https://www.phoenixcontact.com/pc/products/1099904>

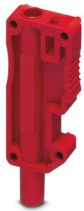


PS-5/2,3MM RD - Test plug

3038723

<https://www.phoenixcontact.com/pc/products/3038723>

Test plug, number of positions: 1, color: red



CLIPFIX 35 - End bracket

3022218

<https://www.phoenixcontact.com/pc/products/3022218>

Quick mounting end clamp for NS 35/7,5 DIN rail or NS 35/15 DIN rail, with marking option, width: 9.5 mm, color: gray



UT 2,5-MTD RD - Feed-through terminal block

1099904

<https://www.phoenixcontact.com/pc/products/1099904>



CLIPFIX 35-5 - End bracket

3022276

<https://www.phoenixcontact.com/pc/products/3022276>

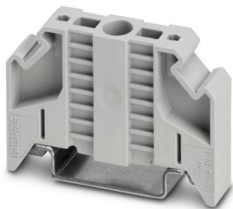


Quick mounting end clamp for NS 35/7,5 DIN rail or NS 35/15 DIN rail, with marking option, with parking option for FBS...5, FBS...6, KSS 5, KSS 6, width: 5.15 mm, color: gray

E/NS 35 N - End bracket

0800886

<https://www.phoenixcontact.com/pc/products/0800886>



End clamp, width: 9.5 mm, color: gray

UT 2,5-MTD RD - Feed-through terminal block

1099904

<https://www.phoenixcontact.com/pc/products/1099904>



PAI-4-N GY - Test adapter

3032871

<https://www.phoenixcontact.com/pc/products/3032871>



4 mm test adapter, for terminal blocks with 5.2 mm, 6.2 mm and 8.2 mm pitch

SZS 0,6X3,5 - Screwdriver

1205053

<https://www.phoenixcontact.com/pc/products/1205053>



Actuation tool, for ST terminal blocks, insulated, also suitable for use as a bladed screwdriver, size: 0.6 x 3.5 x 100 mm, 2-component grip, with non-slip grip

UT 2,5-MTD RD - Feed-through terminal block



1099904

<https://www.phoenixcontact.com/pc/products/1099904>

X-PEN 0,35 - Marker pen

0811228

<https://www.phoenixcontact.com/pc/products/0811228>



Marker pen without ink cartridge, for manual labeling of markers, labeling extremely wipe-proof, line thickness 0.35 mm

Phoenix Contact 2025 © - all rights reserved

<https://www.phoenixcontact.com>

PHOENIX CONTACT GmbH & Co. KG

Flachsmarktstraße 8

D-32825 Blomberg

+49 (0) 5235-3 00

info@phoenixcontact.com