

Mounting brackets - PSD-S ME BR-SM/2S - 2700161

Please be informed that the data shown in this PDF Document is generated from our Online Catalog. Please find the complete data in the user's documentation. Our General Terms of Use for Downloads are valid (<http://phoenixcontact.com/download>)



Angle for two-sided floor mounting, concealed cable routing, black

Why buy this product

- Two-sided mounting for up to 10 signal elements
- With concealed cable routing

Key Commercial Data

Packing unit	1 STK
GTIN	 4 046356 491518

Technical data

Dimensions

Diameter	70 mm
Height	98 mm

Ambient conditions

Ambient temperature (operation)	-30 °C ... 60 °C
---------------------------------	------------------

General

Material	PA A3 x 2G5
Color	black
Weight	71 g
Mounting position	any
Mounting type	Base mounting
Assembly instructions	Seal is supplied with
Scope of delivery	4 x lens sheet screw 3 x seal

Classifications

eCl@ss

eCl@ss 4.0	27143203
------------	----------

Mounting brackets - PSD-S ME BR-SM/2S - 2700161

Classifications

eCl@ss

eCl@ss 4.1	27143203
eCl@ss 5.0	27371232
eCl@ss 5.1	27371232
eCl@ss 6.0	27371232
eCl@ss 7.0	27371232
eCl@ss 8.0	27371233

ETIM

ETIM 3.0	EC001152
ETIM 4.0	EC001152
ETIM 5.0	EC001153

UNSPSC

UNSPSC 6.01	43172015
UNSPSC 7.0901	43201404
UNSPSC 11	39121311
UNSPSC 12.01	39121311
UNSPSC 13.2	39121311

Approvals

Approvals

Approvals

EAC / EAC

Ex Approvals

Approvals submitted

Approval details

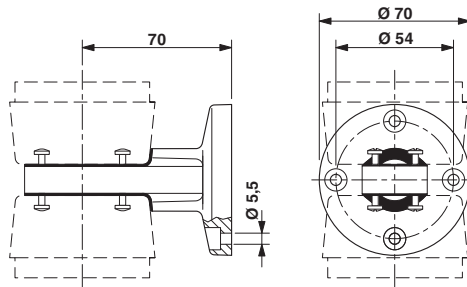
EAC

EAC

Drawings

Mounting brackets - PSD-S ME BR-SM/2S - 2700161

Dimensional drawing



Phoenix Contact 2016 © - all rights reserved
<http://www.phoenixcontact.com>

PHOENIX CONTACT GmbH & Co. KG
Flachsmarktstr. 8
32825 Blomberg
Germany
Tel. +49 5235 300
Fax +49 5235 3 41200
<http://www.phoenixcontact.com>