

# Test terminal strip - RSCWE 6-3/7



3969923

<https://www.phoenixcontact.com/de/produkte/3969923>

Please be informed that the data shown in this PDF document is generated from our Online Catalog. Please find the complete data in the user documentation. Our General Terms of Use for Downloads are valid.

Test terminal strip, mounting type: Wall mounting, color: gray



## Your advantages

- Cost-effective, thanks to the tailored, modular design and use of standardized CLIPLINE complete accessories
- Space saving, thanks to compact, modular test terminal strips
- The integrated, robust switch contact is designed for the most stringent demands, and the use of high-quality materials ensures the transmission of signal currents, even after multiple actuations
- Maximum safety with leading and automatic transformer short circuit

## Commercial Data

Item number	3969923
Packing unit	1 pc
Minimum order quantity	1 pc
Sales Key	A1 - Reihenklemmen
Product Key	BE6113
Catalog Page	Page 636 (C-1-2019)
GTIN	4055626272634
Weight per Piece (including packing)	99,99 g
Weight per Piece (excluding packing)	99,99 g
Customs tariff number	85369010
Country of origin	PL

# Test terminal strip - RSCWE 6-3/7

3969923

<https://www.phoenixcontact.com/de/produkte/3969923>

## Technical Data

### Product properties

Product type	Test terminal strip
Number of positions	7
Pitch	8.2 mm
Number of connections	14
Number of rows	1

### Insulation characteristics

Overvoltage category	III
----------------------	-----

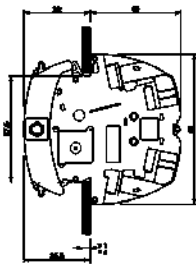
### Electrical properties

Rated surge voltage	4 kV
Test surge voltage	5 kV

### Connection data

Number of connections per level	14
Nominal cross section	6 mm <sup>2</sup>

### Dimensions

Dimensional drawing	
Width	89.7 mm
Height	70.1 mm
Length	81 mm
Pitch	8.2 mm

### Material specifications

Color	gray
Flammability rating according to UL 94	V0
Insulating material group	I
Insulating material	PA
Static insulating material application in cold	-60 °C
Temperature index of insulation material (DIN EN 60216-1 (VDE 0304-21))	125 °C
Relative insulation material temperature index (Elec., UL 746 B)	130 °C
Fire protection for rail vehicles (DIN EN 45545-2) R22	HL 1 - HL 3

# Test terminal strip - RSCWE 6-3/7



3969923

<https://www.phoenixcontact.com/de/produkte/3969923>

Fire protection for rail vehicles (DIN EN 45545-2) R23	HL 1 - HL 3
Fire protection for rail vehicles (DIN EN 45545-2) R24	HL 1 - HL 3
Fire protection for rail vehicles (DIN EN 45545-2) R26	HL 1 - HL 3
Calorimetric heat release NFPA 130 (ASTM E 1354)	27,5 MJ/kg
Surface flammability NFPA 130 (ASTM E 162)	passed
Specific optical density of smoke NFPA 130 (ASTM E 662)	passed
Smoke gas toxicity NFPA 130 (SMP 800C)	passed

## Electrical tests

### Surge voltage test

Test voltage setpoint	4.8 kV
Result	Test passed

### Temperature-rise test

Requirement temperature-rise test	Increase in temperature $\leq 45$ K
Result	Test passed
Short-time withstand current 4 mm <sup>2</sup>	300 A
	500 A
	150 A
	1250 A
Result	Test passed

### Power-frequency withstand voltage

Test voltage setpoint	1.89 kV
Result	Test passed

## Mechanical properties

### Mechanical data

Open side panel	No
-----------------	----

## Mechanical tests

### Mechanical strength

Result	Test passed
--------	-------------

### Attachment on the carrier

Test force setpoint	5 N
Result	Test passed

## Environmental and real-life conditions

### Needle-flame test

Time of exposure	30 s
Result	Test passed

### Oscillation/broadband noise

# Test terminal strip - RSCWE 6-3/7



3969923

<https://www.phoenixcontact.com/de/produkte/3969923>

Specification	DIN EN 50155 (VDE 0115-200):2008-03
Spectrum	Service life test category 2, bogie-mounted
Frequency	$f_1 = 5 \text{ Hz}$ to $f_2 = 250 \text{ Hz}$
ASD level	6.12 (m/s <sup>2</sup> ) <sup>2</sup> /Hz
Acceleration	3.12g
Test duration per axis	5 h
Test directions	X-, Y- and Z-axis
Result	Test passed

## Shocks

Specification	DIN EN 50155 (VDE 0115-200):2008-03
Pulse shape	Half-sine
Acceleration	30g
Shock duration	18 ms
Number of shocks per direction	3
Test directions	X-, Y- and Z-axis (pos. and neg.)
Result	Test passed

## Mounting

Mounting type	Wall mounting
---------------	---------------

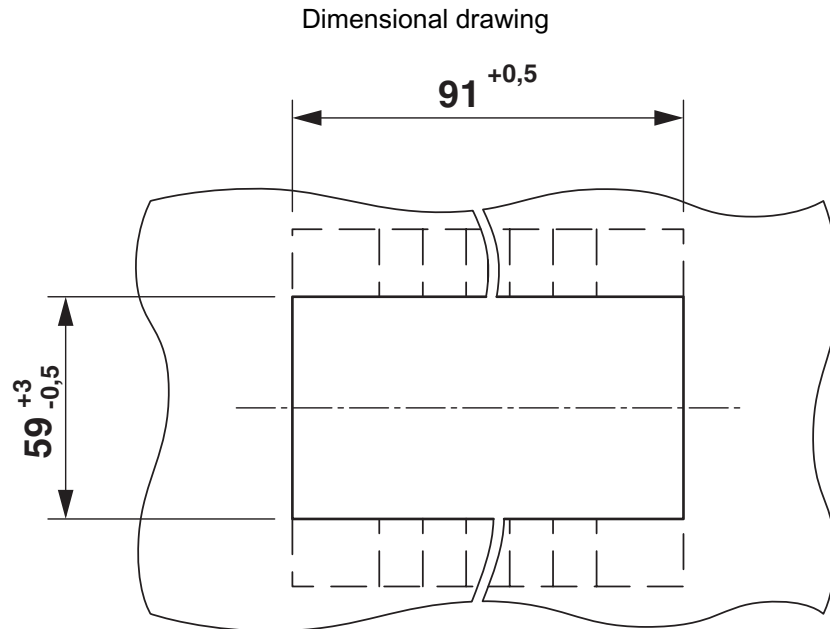
# Test terminal strip - RSCWE 6-3/7

3969923

<https://www.phoenixcontact.com/de/produkte/3969923>



## Drawings



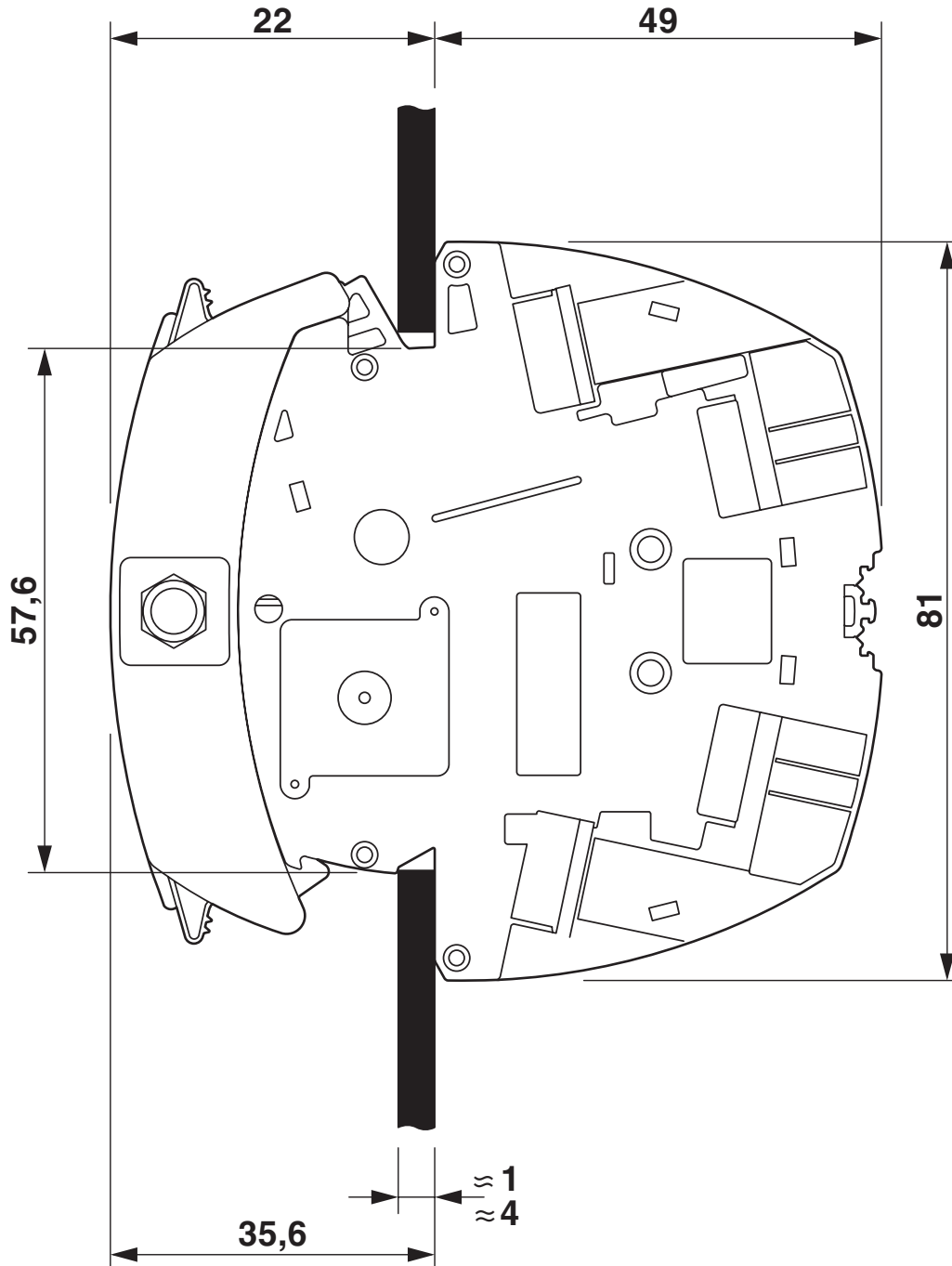
# Test terminal strip - RSCWE 6-3/7

3969923

<https://www.phoenixcontact.com/de/produkte/3969923>



Dimensional drawing



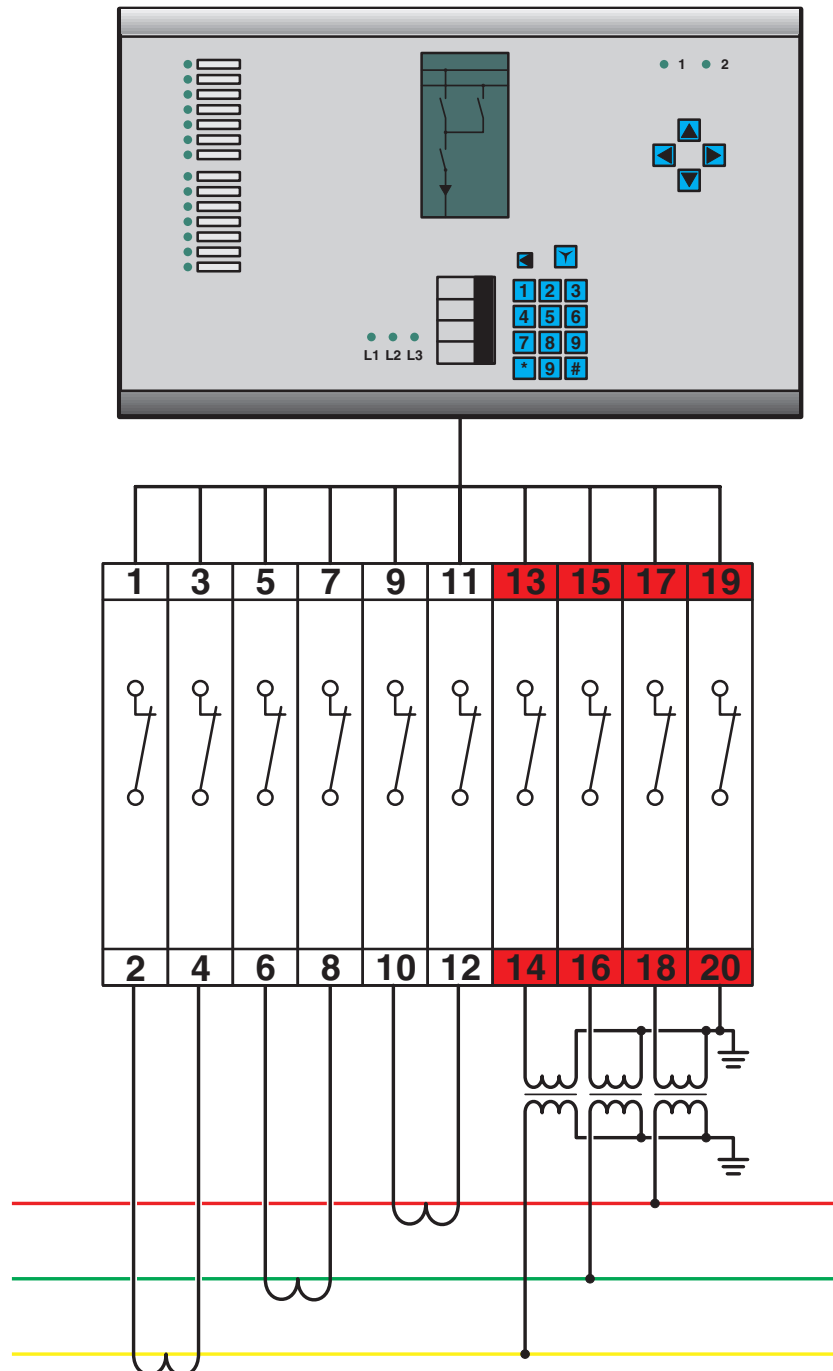
# Test terminal strip - RSCWE 6-3/7

3969923

<https://www.phoenixcontact.com/de/produkte/3969923>



Circuit diagram




# Test terminal strip - RSCWE 6-3/7




3969923

<https://www.phoenixcontact.com/de/produkte/3969923>

## Approvals

 <b>cULus Recognized</b> Approval ID: E60425				
	Nominal Voltage $U_N$	Nominal Current $I_N$	Cross Section AWG	Cross Section $\text{mm}^2$
Use group B	600 V	31 A	20 - 8	-
Use group C	600 V	31 A	20 - 8	-
Use group D	600 V	5 A	20 - 8	-

 <b>CSA</b> Approval ID: 13631				
	Nominal Voltage $U_N$	Nominal Current $I_N$	Cross Section AWG	Cross Section $\text{mm}^2$
Use group B	600 V	31 A	20 - 8	-
Use group C	600 V	31 A	20 - 8	-

 <b>EAC</b> Approval ID: RU C-DE.BL08.B.00682				
---	--	--	--	--

# Test terminal strip - RSCWE 6-3/7



3969923

<https://www.phoenixcontact.com/de/produkte/3969923>

## Classifications

### ECLASS

ECLASS-9.0	27141126
ECLASS-10.0.1	27141126
ECLASS-11.0	27141126
ECLASS-12.0	27141126

### ETIM

ETIM 8.0	EC000902
----------	----------

### UNSPSC

UNSPSC 21.0	39121400
-------------	----------

# Test terminal strip - RSCWE 6-3/7



3969923

<https://www.phoenixcontact.com/de/produkte/3969923>

## Environmental Product Compliance

China RoHS	Environmentally friendly use period: unlimited = EFUP-e
	No hazardous substances above threshold values

Phoenix Contact 2023 © - all rights reserved  
<https://www.phoenixcontact.com>

PHOENIX CONTACT Deutschland GmbH  
Flachmarktstraße 8  
D-32825 Blomberg  
+49 52 35/3-1 20 00  
[info@phoenixcontact.de](mailto:info@phoenixcontact.de)