

## Mounting plate - FL PA 3K4K 8 - 2891108

Please be informed that the data shown in this PDF Document is generated from our Online Catalog. Please find the complete data in the user's documentation. Our General Terms of Use for Downloads are valid (<http://phoenixcontact.com/download>)



Mounting plate for FL SWITCH 30... and FL SWITCH 40... eight-port switches

### Product Description

The FL PA 3K4K 8 and FL PA 3K4K 16 mounting plates provide a method for mounting FL SWITCH 3000 and FL SWITCH 4000 switches to a flat panel surface in any orientation. Exception: The FL SWITCH 3000E switches need to be mounted with the ventilation holes on top. The plate can be mounted on either side of the switch to allow the network ports to face the proper direction. The plate mounts to the panel with user-supplied M6 or 1/4-inch hardware.

### Why buy this product

- Flexible panel mounting of FL SWITCH 3000 and 4000 series Ethernet managed switches
- FL PA 3K4K 8: Allows panel mounting of 5- and 8-port Ethernet switches
- Kit comes complete with screws need to mount the plate to the switch

### Key Commercial Data

Packing unit	1 STK
Weight per Piece (excluding packing)	1.000 g
Custom tariff number	76169990
Country of origin	Taiwan

### Technical data

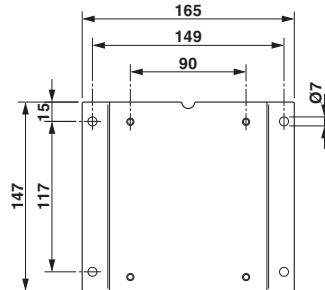
#### Dimensions

Height	147 mm
Width	165 mm

### Drawings

## Mounting plate - FL PA 3K4K 8 - 2891108

Dimensional drawing



### Classifications

#### eCl@ss

eCl@ss 5.1	27250501
eCl@ss 6.0	27250501
eCl@ss 8.0	27189234
eCl@ss 9.0	27189234

#### ETIM

ETIM 5.0	EC002498
ETIM 6.0	EC002540

#### UNSPSC

UNSPSC 13.2	39121004
-------------	----------