

Base strip - PCV 6-16/ 2-GF-10,16 - 1922569

Please be informed that the data shown in this PDF Document is generated from our Online Catalog. Please find the complete data in the user's documentation. Our General Terms of Use for Downloads are valid (<http://phoenixcontact.com/download>)

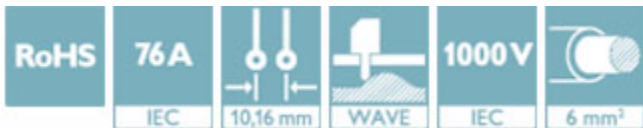


Header, nominal current: 76 A, rated voltage (III/2): 1000 V, number of positions: 2, pitch: 10.16 mm, color: green, contact surface: Silver, mounting: Wave soldering, The nominal current of 76 A applies in connection with connectors from the PC 16 family. 41 A are reached in connection with PC 6 connectors (50 A in accordance with UL).

The figure shows a 6-position version

Why buy this product

- Well-known mounting principle allows worldwide use
- Screwable flange for superior mechanical stability
- Maximum flexibility when it comes to device design – one header for connectors with different connection technologies



Key Commercial Data

| | |
|--------------------------------------|---------------------------------------------------------------------------------------------------------|
| Packing unit | 1 STK |
| Minimum order quantity | 50 STK |
| GTIN |  4 017918 727055 |
| GTIN | 4017918727055 |
| Weight per Piece (excluding packing) | 14.110 g |
| Custom tariff number | 85366930 |
| Country of origin | Poland |

Technical data

Dimensions

| | |
|-----------------------|----------|
| Length [l] | 13.4 mm |
| Pitch | 10.16 mm |
| Dimension a | 10.16 mm |
| Constructional height | 29 mm |

Base strip - PCV 6-16/ 2-GF-10,16 - 1922569

Technical data

Dimensions

| | |
|--------------------------|--------------|
| Height [h] | 34 mm |
| Length of the solder pin | 4 mm |
| Pin dimensions | 0.8 x 1.2 mm |
| Pin spacing | 10.16 mm |
| Hole diameter | 1.7 mm |

General

| | |
|----------------------------------|-------------------------------------------|
| Range of articles | PCV 6-16/..-GF |
| Insulating material group | I |
| Rated surge voltage (III/3) | 6 kV |
| Rated surge voltage (III/2) | 8 kV |
| Rated surge voltage (II/2) | 8 kV |
| Rated voltage (III/3) | 630 V |
| Rated voltage (III/2) | 1000 V |
| Rated voltage (II/2) | 1000 V |
| Connection in acc. with standard | EN-VDE |
| Nominal current I_N | 76 A (41 A in combination with PC 6 plug) |
| Maximum load current | 76 A |
| Insulating material | PA |
| Color | green |
| Number of positions | 2 |

Standards and Regulations

| | |
|----------------------------------|--------|
| Connection in acc. with standard | EN-VDE |
| | CUL |

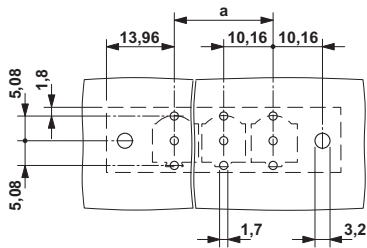
Environmental Product Compliance

| | |
|------------|---------------------------------------------------------|
| China RoHS | Environmentally friendly use period: unlimited = EFUP-e |
| | No hazardous substances above threshold values |

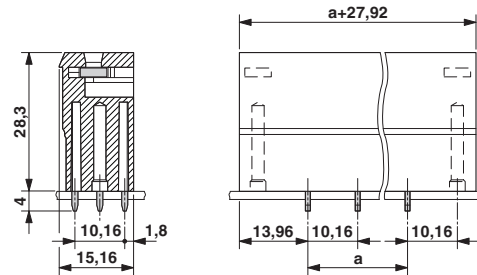
Drawings

Base strip - PCV 6-16/ 2-GF-10,16 - 1922569

Drilling diagram



Dimensional drawing



Classifications

eCl@ss

| | |
|------------|----------|
| eCl@ss 4.0 | 272607xx |
| eCl@ss 4.1 | 27260701 |
| eCl@ss 5.0 | 27260701 |
| eCl@ss 5.1 | 27260701 |
| eCl@ss 6.0 | 27260704 |
| eCl@ss 7.0 | 27440402 |
| eCl@ss 8.0 | 27440402 |
| eCl@ss 9.0 | 27440402 |

ETIM

| | |
|----------|----------|
| ETIM 3.0 | EC001121 |
| ETIM 4.0 | EC002637 |
| ETIM 5.0 | EC002637 |
| ETIM 6.0 | EC002637 |

UNSPSC

| | |
|---------------|----------|
| UNSPSC 6.01 | 30211810 |
| UNSPSC 7.0901 | 39121409 |
| UNSPSC 11 | 39121409 |
| UNSPSC 12.01 | 39121409 |
| UNSPSC 13.2 | 39121409 |

Approvals

Approvals

Approvals


UL Recognized / SEV / cUL Recognized / IECCE CB Scheme / EAC / cULus Recognized


Base strip - PCV 6-16/ 2-GF-10,16 - 1922569


Approvals


Ex Approvals


Approval details

| | | | |
|--------------------|-----------------------------------------------------------------------------------|-------------------------------------------------------------------------------------------------------------------------------------------------------|--------------|
| UL Recognized |  | http://database.ul.com/cgi-bin/XYV/template/LISEXT/1FRAME/index.htm | FILE E 60425 |
| | B | C | D |
| Nominal current IN | 66 A | 66 A | 5 A |
| Nominal voltage UN | 300 V | 300 V | 600 V |

| | | | |
|--------------------|-----------------------------------------------------------------------------------|-------------------------------------------------------------------------------------------------------------------------------------------------------|---------|
| SEV |  | https://www.electrosuisse.ch/en/meta/shop/product-certificates.html | IK-3431 |
| | | | |
| Nominal current IN | 76 A | | |
| Nominal voltage UN | 1000 V | | |

| | | | |
|--------------------|-------------------------------------------------------------------------------------|-------------------------------------------------------------------------------------------------------------------------------------------------------|--------------|
| cUL Recognized |  | http://database.ul.com/cgi-bin/XYV/template/LISEXT/1FRAME/index.htm | FILE E 60425 |
| | B | C | D |
| Nominal current IN | 66 A | 66 A | 5 A |
| Nominal voltage UN | 300 V | 300 V | 600 V |

| | | | |
|--------------------|-------------------------------------------------------------------------------------|-----------------------------------------------------------|---------|
| IECEE CB Scheme |  | http://www.iecee.org/ | CH-8077 |
| | | | |
| Nominal current IN | 76 A | | |
| Nominal voltage UN | 1000 V | | |

| | | | |
|-----|-------------------------------------------------------------------------------------|---------|--|
| EAC |  | B.01742 | |
|-----|-------------------------------------------------------------------------------------|---------|--|

Base strip - PCV 6-16/ 2-GF-10,16 - 1922569

Approvals

cULus Recognized



<http://database.ul.com/cgi-bin/XYV/template/LISEXT/1FRAME/index.htm>

Accessories

Accessories

Coding element

Coding profile - CP-HCC 4 - 1600027



Coding profile, pitch: 0 mm, number of positions: 1, color: red

Mounting material

Accessories - DFK-PC 16-SS - 1705449



Screw set for DFK-PC 16... connectors

Additional products

Printed-circuit board connector - PC 6/ 2-STF-10,16 - 1913578



Plug component, nominal current: 41 A, rated voltage (III/2): 1000 V, number of positions: 2, pitch: 10.16 mm, connection method: Screw connection with tension sleeve, color: green, contact surface: Silver