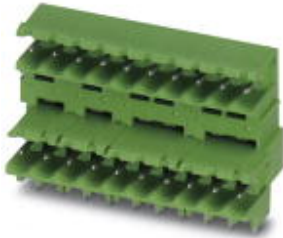


## Base strip - MDSTBW 2,5/ 9-G-5,08 - 1842283

Please be informed that the data shown in this PDF Document is generated from our Online Catalog. Please find the complete data in the user's documentation. Our General Terms of Use for Downloads are valid (<http://phoenixcontact.com/download>)

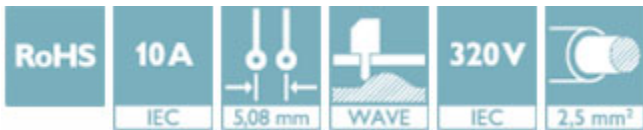


The figure shows a 10-position version of the product

Header, Nominal current: 10 A, Rated voltage (III/2): 320 V, Number of positions: 9, Pitch: 5.08 mm, Color: green, Contact surface: Tin, Mounting: Wave soldering, The article can be aligned to create different nos. of positions! In combination with MVSTB or FKCV plug components, both an MVSTBW (or FKCVW) and an MVSTBR plug (or FKCVR) must be used. Combination with TMSTBP plug components is not possible!

### Why buy this product

- ✓ Maximum flexibility when it comes to device design – one header for connectors with different connection technologies
- ✓ Easy PCB replacement thanks to plug-in modules
- ✓ Well-known mounting principle allows worldwide use
- ✓ Conductor connection on several levels enables higher contact density



### Key Commercial Data

|                      |          |
|----------------------|----------|
| Packing unit         | 1 STK    |
| Custom tariff number | 85366990 |
| Country of origin    | Germany  |

### Technical data

#### Dimensions

|                          |          |
|--------------------------|----------|
| Length                   | 22.1 mm  |
| Pitch                    | 5.08 mm  |
| Dimension a              | 40.64 mm |
| Constructional height    | 23.7 mm  |
| Length of the solder pin | 3.8 mm   |
| Pin dimensions           | 1 x 1 mm |
| Hole diameter            | 1.4 mm   |

#### General

|                   |                 |
|-------------------|-----------------|
| Range of articles | MDSTBW 2,5/..-G |
|-------------------|-----------------|

## Base strip - MDSTBW 2,5/ 9-G-5,08 - 1842283

### Technical data

#### General

|                                  |        |
|----------------------------------|--------|
| Insulating material group        | III    |
| Rated surge voltage (III/3)      | 4 kV   |
| Rated surge voltage (III/2)      | 4 kV   |
| Rated surge voltage (II/2)       | 4 kV   |
| Rated voltage (III/3)            | 250 V  |
| Rated voltage (III/2)            | 320 V  |
| Rated voltage (II/2)             | 400 V  |
| Connection in acc. with standard | EN-VDE |
| Nominal current I <sub>N</sub>   | 10 A   |
| Maximum load current             | 10 A   |
| Insulating material              | PBT    |
| Color                            | green  |
| Number of positions              | 9      |

#### Standards and Regulations

|                                  |        |
|----------------------------------|--------|
| Connection in acc. with standard | EN-VDE |
|                                  | CSA    |

#### Environmental Product Compliance

|            |   |
|------------|---|
| China RoHS | Environmentally friendly use period: unlimited = EFUP-e |
|            | No hazardous substances above threshold values          |

### Drawings

Dimensional  
drawing

### Approvals

#### Approvals

---

#### Approvals

CSA / VDE Gutachten mit Fertigungsüberwachung / IECCE CB Scheme / cULus Recognized / EAC

---


#### Ex Approvals

---


#### Approval details

## Base strip - MDSTBW 2,5/ 9-G-5,08 - 1842283


### Approvals

CSA  <http://www.csagroup.org/services/testing-and-certification/certified-product-listing/13631>

|                    | B     | D     |
|--------------------|-------|-------|
| Nominal current IN | 15 A  | 15 A  |
| Nominal voltage UN | 300 V | 300 V |

VDE Gutachten mit Fertigungsüberwachung  <http://www.vde.com/en/Institute/OnlineService/VDE-approved-products/Pages/Online-Search.aspx40004701>

|                    |       |
|--------------------|-------|
| Nominal current IN | 10 A  |
| Nominal voltage UN | 250 V |

IECEE CB Scheme  <http://www.iecee.org/DE1-56062-B1B2>

|                    |       |
|--------------------|-------|
| Nominal current IN | 10 A  |
| Nominal voltage UN | 250 V |

cULus Recognized <http://database.ul.com/cgi-bin/XYV/template/LISEXT/1FRAME/index.htm> E60425-19931011

|                    | B     | D     |
|--------------------|-------|-------|
| Nominal current IN | 15 A  | 10 A  |
| Nominal voltage UN | 300 V | 300 V |

|             |
|-------------|
| EAC B.01742 |
|-------------|