

Printed-circuit board connector - IPC 35 HC/ 4-GF-15,00 - 1784936

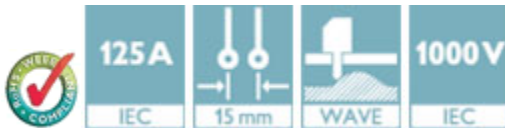
Please be informed that the data shown in this PDF Document is generated from our Online Catalog. Please find the complete data in the user's documentation. Our General Terms of Use for Downloads are valid (<http://phoenixcontact.com/download>)

Header, Nominal current: 125 A, Rated voltage (III/2): 1000 V, Number of positions: 4, Pitch: 15 mm, Color: green, Contact surface: Silver, Mounting: Wave soldering



Product Features

- Inverted IPC 35 HC headers for implementing a touch-proof PCB output (in combination with IPC 35 HC plugs) or a PCB/PCB connection (in combination with PC 35 headers)
- DFK versions for fixing in the housing panel
- Integrated threaded flange for screw connection with the PCB



Key Commercial Data

Packing unit	1 pc
Minimum order quantity	25 pc
Weight per Piece (excluding packing)	110.4 g
Custom tariff number	85366990
Country of origin	Poland

Technical data

Dimensions

Length	44.9 mm
Pitch	15.00 mm
Dimension a	45 mm
Constructional height	28.5 mm
Height	33.1 mm
Length of the solder pin	4.6 mm
Pin dimensions	2,4 x 2,5 mm
Hole diameter	3.6 mm

General

Printed-circuit board connector - IPC 35 HC/ 4-GF-15,00 - 1784936

Technical data

General

Range of articles	IPC 35 HC/...GF
Insulating material group	IIIa
Rated surge voltage (III/3)	8 kV
Rated surge voltage (III/2)	8 kV
Rated surge voltage (II/2)	8 kV
Rated voltage (III/3)	1000 V
Rated voltage (III/2)	1000 V
Rated voltage (II/2)	1000 V
Connection in acc. with standard	EN-VDE
Nominal current I_N	125 A
Maximum load current	125 A
Insulating material	PBT
Flammability rating according to UL 94	V0
Color	green
Number of positions	4

Standards and Regulations

Connection in acc. with standard	EN-VDE
	UL
Flammability rating according to UL 94	V0

Classifications

eCl@ss

eCl@ss 4.0	272607xx
eCl@ss 4.1	27260701
eCl@ss 5.0	27260701
eCl@ss 5.1	27260701
eCl@ss 6.0	27260704
eCl@ss 7.0	27440402
eCl@ss 8.0	27440402
eCl@ss 9.0	27440402

ETIM

ETIM 4.0	EC002637
ETIM 5.0	EC002637

Printed-circuit board connector - IPC 35 HC/ 4-GF-15,00 - 1784936

Classifications

UNSPSC

UNSPSC 6.01	30211810
UNSPSC 7.0901	39121409
UNSPSC 11	39121409
UNSPSC 12.01	39121409
UNSPSC 13.2	39121409

Approvals

Approvals

Approvals

UL Recognized / CCA / IECCE CB Scheme / VDE Gutachten mit Fertigungsüberwachung / EAC / EAC

Ex Approvals

Approvals submitted

Approval details


UL Recognized		
	B	C
Nominal current I _N	115 A	115 A
Nominal voltage U _N	600 V	600 V

CCA

IECCE CB Scheme	
Nominal current I _N	125 A
Nominal voltage U _N	1000 V

Printed-circuit board connector - IPC 35 HC/ 4-GF-15,00 - 1784936

Approvals

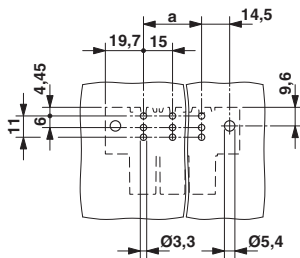
VDE Gutachten mit Fertigungsüberwachung 	
Nominal current I_N	125 A
Nominal voltage U_N	1000 V

EAC

EAC

Drawings

Drilling diagram



Dimensional drawing

