

Printed-circuit board connector - IPC 35 HC/ 2-GF-15,00 - 1784910

Please be informed that the data shown in this PDF Document is generated from our Online Catalog. Please find the complete data in the user's documentation. Our General Terms of Use for Downloads are valid (<http://download.phoenixcontact.com>)

Header, Nominal current: 125 A, Rated voltage (III/2): 1000 V, Number of positions: 2, Pitch: 15 mm, Color: green, Contact surface: Silver, Assembly: Soldering



Product Features

- Inverted IPC 35 HC headers for implementing a touch-proof PCB output (in combination with IPC 35 HC plugs) or a PCB/PCB connection (in combination with PC 35 headers)
- Integrated threaded flange for screw connection with the PCB
- DFK versions for fixing in the housing panel



Key commercial data

Packing unit	1 pc
Minimum order quantity	25 pc
Weight per Piece (excluding packing)	61.6 GRM
Custom tariff number	85366990
Country of origin	Germany

Technical data

Dimensions

Length	44.9 mm
Height	33.1 mm
Pitch	15 mm
Dimension a	15 mm
Pin dimensions	2,4 x 2,5 mm
Hole diameter	3.6 mm

General

Range of articles	IPC 35 HC/...GF
Insulating material group	IIIa

Printed-circuit board connector - IPC 35 HC/ 2-GF-15,00 - 1784910

Technical data

General

Rated surge voltage (III/3)	8 kV
Rated surge voltage (III/2)	8 kV
Rated surge voltage (II/2)	8 kV
Rated voltage (III/3)	1000 V
Rated voltage (III/2)	1000 V
Rated voltage (II/2)	1000 V
Connection in acc. with standard	EN-VDE
Nominal current I _N	125 A
Maximum load current	125 A
Insulating material	PBT
Inflammability class according to UL 94	V0
Color	green
Number of positions	2

Classifications

eCl@ss

eCl@ss 4.0	272607xx
eCl@ss 4.1	27260701
eCl@ss 5.0	27260701
eCl@ss 5.1	27260701
eCl@ss 6.0	27260704
eCl@ss 7.0	27440402
eCl@ss 8.0	27440402

ETIM

ETIM 4.0	EC002637
ETIM 5.0	EC002637

UNSPSC

UNSPSC 6.01	30211810
UNSPSC 7.0901	39121409
UNSPSC 11	39121409
UNSPSC 12.01	39121409
UNSPSC 13.2	39121409

Printed-circuit board connector - IPC 35 HC/ 2-GF-15,00 - 1784910

Approvals

Approvals

Approvals

UL Recognized / GOST / GOST / CCA / IECB CB Scheme / VDE Gutachten mit Fertigungsüberwachung

Ex Approvals

Approvals submitted

Approval details

UL Recognized		
	B	C
Nominal current IN	115 A	115 A
Nominal voltage UN	600 V	600 V

GOST


GOST

CCA

IECEE CB Scheme	
Nominal current IN	125 A
Nominal voltage UN	1000 V

Printed-circuit board connector - IPC 35 HC/ 2-GF-15,00 - 1784910

Approvals

VDE Gutachten mit Fertigungsüberwachung 	
Nominal current I _N	125 A
Nominal voltage U _N	1000 V

Accessories

Accessories

Coding element

Coding profile - CP-HC - 1686478



Encoding profile, 4 encoding profiles per strip, 40 strips per unit pack, for insertion in encoding grooves

Additional products

Printed-circuit board connector - PC 35 HC/ 2-GF-15,00 - 1762741



Header, Nominal current: 125 A, Rated voltage (III/2): 1000 V, Number of positions: 2, Pitch: 15 mm, Color: green, Contact surface: Silver, Assembly: Soldering

Printed-circuit board connector - PCV 35 HC/ 2-GF-15,00 - 1762796



Header, Nominal current: 125 A, Rated voltage (III/2): 1000 V, Number of positions: 2, Pitch: 15 mm, Color: green, Contact surface: Silver, Assembly: Soldering

Printed-circuit board connector - IPC 35 HC/ 2-GF-15,00 - 1784910

Accessories

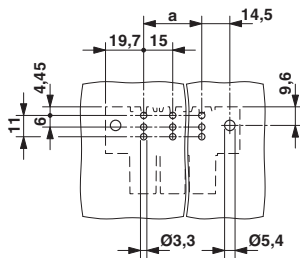
Printed-circuit board connector - IPC 35 HC/ 2-STF-15,00 - 1784790



Plug component, Nominal current: 125 A, Rated voltage (III/2): 1000 V, Number of positions: 2, Pitch: 15 mm, Connection method: Screw connection, Color: green, Contact surface: Silver

Drawings

Drilling diagram



Dimensioned drawing

