

Contact insert - HC-K 8/24-ESTC - 1636318

Please be informed that the data shown in this PDF Document is generated from our Online Catalog. Please find the complete data in the user's documentation. Our General Terms of Use for Downloads are valid (<http://phoenixcontact.com/download>)



HEAVYCON male insert, K8/24 series, for 8 power and 24 control contacts, crimp connection



Key Commercial Data

Packing unit	1 pc
Weight per Piece (excluding packing)	55.0 g
Custom tariff number	85366990
Country of origin	Romania

Technical data

General

Note	For housing HC-B10, power contacts: CK 2,5-ED, control contacts: CK 1,6-ED (crimp contacts not included in scope of delivery)
Connection method	Crimp connection (power contacts) Crimp connection (Signal contacts)
Pollution degree	3
Overvoltage category	III
Number of positions	8+24+PE
No. of power contacts	8
No. of control contacts	24
Insertion/withdrawal cycles	≥ 500
Type	B10
Conductor cross section	0.5 mm ² ... 4 mm ² (power contacts) 0.14 mm ² ... 2.5 mm ² (control contacts)
Connection cross section AWG	20 ... 12 (power contacts) 26 ... 14 (control contacts)
Stripping length of the individual wire	7.5 mm (power contacts)

Contact insert - HC-K 8/24-ESTC - 1636318

Technical data

General

	8 mm (Control contacts, for 0.14 mm ² ... 1.5 mm ² cross section)
	6 mm (Control contacts, with a cross section of 2.5 mm ²)
Assembly instructions	- Dismantling of CK2,5-ED power contacts... using a size 0 Phillips screwdriver (DIN 5260).
Connection	Connectors may be plugged in only when there is no load/voltage.

Ambient conditions

Ambient temperature (operation)	-40 °C ... 125 °C (including heating up of contacts)
---------------------------------	--

Material data

Flammability rating according to UL 94	V0
Contact material	Cu alloy
Material of contact surface, power contact	Ag (alternat. Au)
Material of contact surface, control contact	Ag (alternatively Au)
Contact carrier material	PA

Electrical characteristics

Rated voltage for power contacts	230/400 V
Rated voltage (III/3)	Power 230 V (Conductor-PE)
	Signal 160 V
	Power 400 V (Conductor-Conductor)
Rated surge voltage	4 kV (power contacts)
	2.5 kV (control contacts)
Rated current	16 A (power contacts)
	10 A (control contacts)

Standards and Regulations

Connection in acc. with standard	CSA
Flammability rating according to UL 94	V0

Classifications

eCl@ss

eCl@ss 4.0	27140816
eCl@ss 4.1	27140816
eCl@ss 5.0	27143424
eCl@ss 5.1	27143424
eCl@ss 6.0	27143424
eCl@ss 7.0	27440209
eCl@ss 8.0	27440205

Contact insert - HC-K 8/24-ESTC - 1636318

Classifications

ETIM

ETIM 2.0	EC000438
ETIM 3.0	EC000438
ETIM 4.0	EC000438
ETIM 5.0	EC000438

UNSPSC

UNSPSC 6.01	30211923
UNSPSC 7.0901	39121522
UNSPSC 11	39121522
UNSPSC 12.01	39121522
UNSPSC 13.2	39121522

Approvals

Approvals


Approvals

CSA / UL Recognized / EAC / GL

Ex Approvals

Approvals submitted

Approval details

CSA 	
mm ² /AWG/kcmil	20-12
Nominal current I _N	16 A
Nominal voltage U _N	600 V

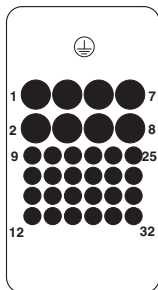
Contact insert - HC-K 8/24-ESTC - 1636318

Approvals

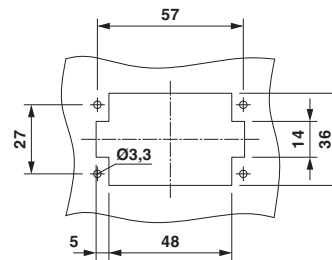
UL Recognized	
Nominal voltage UN	600 V
EAC	
GL	

Drawings

Schematic diagram



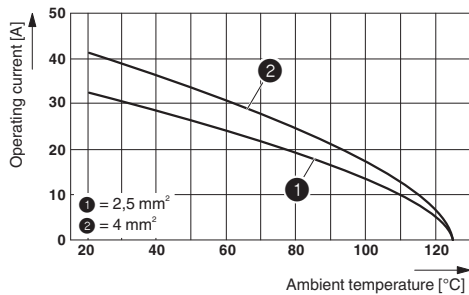
Dimensional drawing



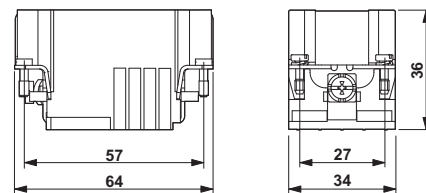
Panel cutout

Connector pin assignment, connection side

Diagram



Dimensional drawing



Dimensional drawing

Derating diagram