

## Housing - HC-B 32-TMS-100-O1STM32S-EEE - 1580517

Please be informed that the data shown in this PDF Document is generated from our Online Catalog. Please find the complete data in the user's documentation. Our General Terms of Use for Downloads are valid (<http://phoenixcontact.com/download>)



HEAVYCON ADVANCE B32 sleeve housing, for increased environmental requirements, EMC conductive, with Allen screw locking, 1 x M32 x 1.5 with lateral cable outlet



### Key Commercial Data

Packing unit	1 pc
Weight per Piece (excluding packing)	726.67 g
Custom tariff number	85389099
Country of origin	Germany

### Technical data

#### Dimensions

Height	110 mm
Width	94 mm
Length	126 mm
Length of the assembly cutout	86 mm
Width of the assembly cutout	71 mm

#### Ambient conditions

Degree of protection of housing (IP)	IP66
	IP68 (0.2 bar 24 h)
	IP69K
Degree of protection of housing (NEMA)	4 (NEMA 250)
	4X (NEMA 250)
	6P (NEMA 250)
	12 (NEMA 250)

# Housing - HC-B 32-TMS-100-O1STM32S-EEE - 1580517

## Technical data

### Ambient conditions

Ambient temperature (operation)	-40 °C ... 125 °C
---------------------------------	-------------------

### General

Note	For contact inserts HC-B16, BB32, D40, DD72, HS6, HV6, M, K
Size	B32
Housing type	Sleeve housing
Locking type	Screw locking
Torque	3 Nm (Locking screw)
Fixing screws	M6 (screw head: 5 mm Allen screw)
No. of cable outlets	1
Cable exit	Lateral
Screw connection	none
Type of the screw connection	1x M32
Housing material	Die-cast aluminum, salt water resistant
Housing surface material	Uncoated
Seal material	NBR, conductive
Material lock	Stainless steel
Assembly instructions	In order to guarantee that the ground conductor contact functions even when plugged in at an angle, the two panel mounting flanges must have sufficient electrical contact with the metal mounting panel.
Connection	To ensure optimum shielding, any insulating power coating must be removed from the profile gasket area on the control cabinet panel. Tightening torque of locking screw: 3 Nm.

## Classifications

### eCl@ss

eCl@ss 4.0	27140816
eCl@ss 4.1	27140816
eCl@ss 5.0	27143424
eCl@ss 5.1	27143424
eCl@ss 6.0	27261203
eCl@ss 7.0	27440202
eCl@ss 8.0	27440202
eCl@ss 9.0	27440202

### ETIM

ETIM 2.0	EC000437
ETIM 3.0	EC000437

# Housing - HC-B 32-TMS-100-O1STM32S-EEE - 1580517

## Classifications

### ETIM

ETIM 4.0	EC000437
ETIM 5.0	EC000437

### UNSPSC

UNSPSC 6.01	31261501
UNSPSC 7.0901	31261501
UNSPSC 11	31261501
UNSPSC 12.01	31261501
UNSPSC 13.2	31261501

## Approvals

### Approvals

---

Approvals

EAC / GL

---

Ex Approvals

---

Approvals submitted

---

### Approval details

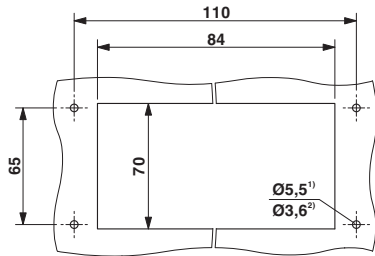
EAC
-----

GL
----

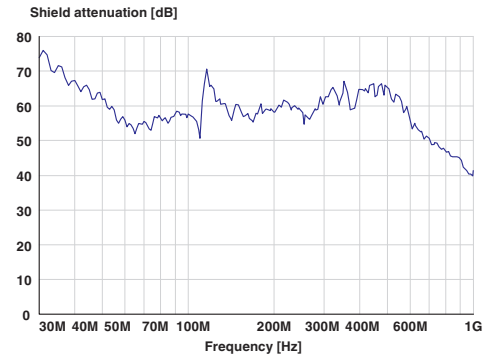
## Drawings

# Housing - HC-B 32-TMS-100-O1STM32S-EEE - 1580517

Dimensional drawing



Diagram

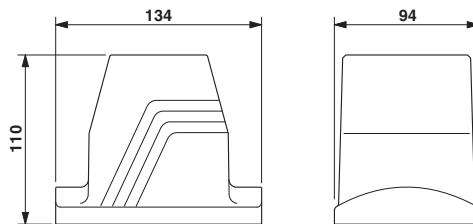


## Mounting cutout

- 1) Standard M5 screw
- 2) Self-tapping (Torx® 20, M4)

Shield attenuation

Dimensional drawing



Dimensional drawing