

Flush-type connector - SACC-DSIV-M12FSB-5CON-L180 - 1515934

Please be informed that the data shown in this PDF Document is generated from our Online Catalog. Please find the complete data in the user's documentation. Our General Terms of Use for Downloads are valid (<http://phoenixcontact.com/download>)



Sensor/Actuator flush-type socket, 5-pos., M12, B-coded, rear/screw mounting with M12 thread, with straight solder connection

Product Features

- Standard pin assignments and codings for signal transmission with a uniform design-in design



Key Commercial Data

Packing unit	1 pc
Minimum order quantity	10 pc
Weight per Piece (excluding packing)	14.8 g
Custom tariff number	85366990
Country of origin	Germany

Technical data

Standards and Regulations

Standard designation	M12 connector
Standards/regulations	IEC 61076-2-101
Flammability rating according to UL 94	HB

Classifications

eCl@ss

eCl@ss 4.0	27140815
eCl@ss 4.1	27140815
eCl@ss 5.0	27143423
eCl@ss 5.1	27143423
eCl@ss 6.0	27143423

Flush-type connector - SACC-DSIV-M12FSB-5CON-L180 - 1515934

Classifications

eCl@ss

eCl@ss 7.0	27449001
eCl@ss 8.0	27440103

ETIM

ETIM 2.0	EC001297
ETIM 3.0	EC002061
ETIM 4.0	EC002061
ETIM 5.0	EC002061

UNSPSC

UNSPSC 6.01	31251501
UNSPSC 7.0901	31251501
UNSPSC 11	31251501
UNSPSC 12.01	31251501
UNSPSC 13.2	31251501

Approvals

Approvals

Approvals

EAC / EAC / EAC

Ex Approvals

Approvals submitted

Approval details

EAC

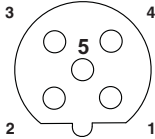
EAC

EAC

Drawings

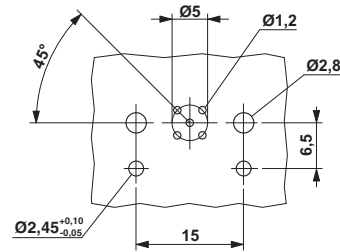
Flush-type connector - SACC-DSIV-M12FSB-5CON-L180 - 1515934

Schematic diagram



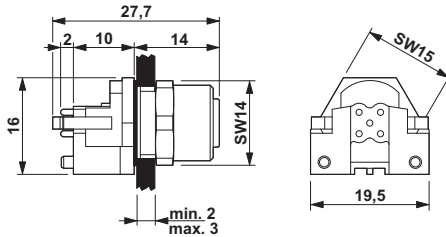
Pin assignment M12 socket, 5-pos., B-coded, female side

Drilling diagram



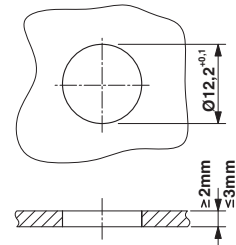
M12 flush-type connector

Dimensional drawing



M12 flush-type connector

Dimensional drawing



Panel cutout