

Housing - HC-B 06-TFL-N-M1PG13.5G - 1460338


Please be informed that the data shown in this PDF Document is generated from our Online Catalog. Please find the complete data in the user's documentation. Our General Terms of Use for Downloads are valid (<http://phoenixcontact.com/download>)



HEAVYCON B6 sleeve housing, for single locking latch, height: 56 mm, with screw connection, 1 x Pg13.5 gland, straight cable outlet



Key Commercial Data

| | |
|--------------------------------------|---------------------------------------------------------------------------------------------------------|
| Packing unit | 1 pc |
| Minimum order quantity | 10 pc |
| GTIN |  4 046356 794824 |
| GTIN | 4046356794824 |
| Weight per Piece (excluding packing) | 142.000 g |
| Custom tariff number | 85389099 |
| Country of origin | Germany |

Technical data

Dimensions

| | |
|-------------------------|--------------------|
| Height | 56 mm |
| Width | 43 mm |
| Length | 60 mm |
| Wrench size, union nut | 20 mm |
| External cable diameter | 7.5 mm ... 12.5 mm |

Ambient conditions

| | |
|--------------------------------------|-------------------|
| Degree of protection of housing (IP) | IP65 |
| Ambient temperature (operation) | -40 °C ... 125 °C |

General

Housing - HC-B 06-TFL-N-M1PG13.5G - 1460338

Technical data

General

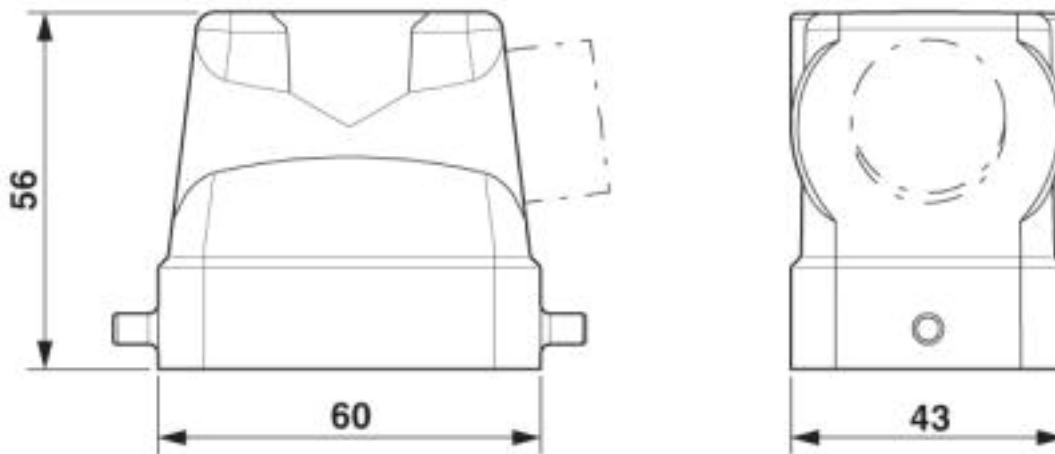
| | |
|------------------------------|------------------------------------------|
| Note | For contact inserts HC-B6, BB10, DD24, M |
| Size | B6 |
| Housing type | Sleeve housing |
| Locking type | for single locking latch |
| No. of cable outlets | 1 |
| Cable outlet | straight |
| Screw connection | with |
| Type of the screw connection | Pg13.5 |
| Housing material | Aluminum die-cast |
| Housing surface material | Powder-coated, gray |

Environmental Product Compliance

| | |
|------------|---------------------------------------------------------|
| China RoHS | Environmentally friendly use period: unlimited = EFUP-e |
| | No hazardous substances above threshold values |

Drawings

Dimensional drawing



Dimensional drawing

Classifications

eCl@ss

| | |
|---------------|----------|
| eCl@ss 10.0.1 | 27440202 |
| eCl@ss 4.0 | 27140800 |

Housing - HC-B 06-TFL-N-M1PG13.5G - 1460338

Classifications

eCl@ss

| | |
|------------|----------|
| eCl@ss 4.1 | 27140800 |
| eCl@ss 5.0 | 27143400 |
| eCl@ss 5.1 | 27261200 |
| eCl@ss 6.0 | 27261200 |
| eCl@ss 7.0 | 27440202 |
| eCl@ss 8.0 | 27440202 |
| eCl@ss 9.0 | 27440202 |

ETIM

| | |
|----------|----------|
| ETIM 3.0 | EC000437 |
| ETIM 4.0 | EC000437 |
| ETIM 5.0 | EC000437 |
| ETIM 6.0 | EC000437 |
| ETIM 7.0 | EC000437 |

UNSPSC

| | |
|---------------|----------|
| UNSPSC 6.01 | 31261502 |
| UNSPSC 7.0901 | 31261502 |
| UNSPSC 11 | 31261502 |
| UNSPSC 12.01 | 31261502 |
| UNSPSC 13.2 | 31261501 |

Approvals


Approvals

Approvals

EAC

Ex Approvals

Approval details

| | | |
|-----|-------------------------------------------------------------------------------------|--------------------------|
| EAC |  | RU C- DE.AI30.B.01102 |
|-----|-------------------------------------------------------------------------------------|--------------------------|

