


Cable gland - G-INS-PG7-M68N-PNES-LG - 1424485

Please be informed that the data shown in this PDF Document is generated from our Online Catalog. Please find the complete data in the user's documentation. Our General Terms of Use for Downloads are valid (<http://phoenixcontact.com/download>)



Cable gland, Cable gland material: PA, External cable diameter 3 mm ... 6.5 mm, Shielding: No, Connecting thread: Pg7, Color: lightgrey RAL 7035

Key Commercial Data

Packing unit	1
GTIN	 4 055626 373157
GTIN	4055626373157
Custom tariff number	39269097

Technical data

Dimensions

Length	32 mm
Wrench size, union nut	15 mm
Wrench size, support	15 mm
Hexagon angular dimension	17.1 mm
Length of the connecting thread	8 mm
Feed-through hole diameter	12.6 mm ... 12.7 mm
External cable diameter	3 mm ... 6.5 mm
	4 mm ... 6 mm (for UL 514 B)

Ambient conditions

Degree of protection	IP68 (5 bar / 0.5 h)
Ambient temperature (operation)	-20 °C ... 100 °C (static)

General

No. of conductors	1
Cable gland material	PA
Cable seal material	Neoprene
Shielded	No

Cable gland - G-INS-PG7-M68N-PNES-LG - 1424485

Technical data

General

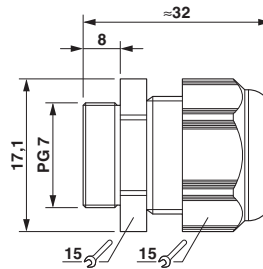
Thread type on connection side	Pg7
Torque	1.5 Nm (Union nut)
	1.5 Nm (Support)
	2 Nm (for UL514 B: union nut / support)
Flammability rating according to UL 94	V2
	V2 (Housing)
Color	lightgrey RAL 7035
Assembly instructions	1) Mount screw connection support in the housing using the correct torque 2) Insert cable 3) Tighten union nut using the correct torque
Manufacturer	BIMED
Manufacturer Designation	BS-11

Standards and Regulations

Flammability rating according to UL 94	V2
--	----

Drawings

Dimensional drawing



Dimensional drawing

Approvals

Approvals

Approvals

UL Recognized / EAC


Ex Approvals

Cable gland - G-INS-PG7-M68N-PNES-LG - 1424485

Approvals

Approval details

UL Recognized		http://database.ul.com/cgi-bin/XYV/template/LISEXT/1FRAME/index.htm	E199260
---------------	---	---	---------

EAC			EAC-Zulassung
-----	---	--	---------------