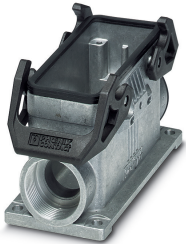


## Housing - HC-STA-B16-SLWD-2SSP21-ELC-AL - 1412857

Please be informed that the data shown in this PDF Document is generated from our Online Catalog. Please find the complete data in the user's documentation. Our General Terms of Use for Downloads are valid (<http://phoenixcontact.com/download>)



Box mounting bases B16, with double locking latch, material: Die-cast aluminum, salt water resistant, cable outlets: 2, lateral, height: 68 mm, cable gland: none, support sleeve: no, 2x Pg21, Standard

### Your advantages

- good shielding in the event of electromagnetic interference



### Key Commercial Data

Packing unit	1 pc
GTIN	
GTIN	4055626060781
Weight per Piece (excluding packing)	300.000 g
Custom tariff number	85389099
Country of origin	Poland

### Technical data

#### Dimensions

Height	68 mm
Width	57 mm
Length	117.5 mm

#### Ambient conditions

Degree of protection (IP)	IP66
	IP67
Degree of protection (NEMA)	4 (UL 50e)
	4X (UL 50e)

# Housing - HC-STA-B16-SLWD-2SSP21-ELC-AL - 1412857

## Technical data

### Ambient conditions

	12 (UL 50e)
Ambient temperature (operation)	-40 °C ... 125 °C

### General

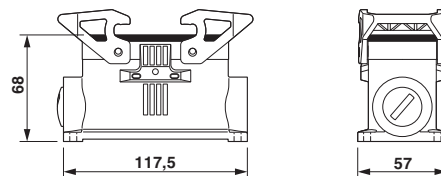
Note	For contact inserts HC-B16, BB32, D40, DD72, HS6, HV6, M, K
Size	B16
Housing type	Box mounting bases
Color	gray aluminum
Locking type	with double locking latch
No. of cable outlets	2
Cable outlet	lateral
Screw connection	none
Type of the screw connection	2x Pg21
Housing material	Die-cast aluminum, salt water resistant
Housing surface material	uncoated
Seal material	NBR, conductive
Material lock	PA
Flammability rating according to UL 94	V0 (Interlock)
Assembly instructions	One opening is sealed with a plastic filler plug and can be opened using a screwdriver.

### Environmental Product Compliance

China RoHS	Environmentally Friendly Use Period = 50 years
	For details about hazardous substances go to tab "Downloads", Category "Manufacturer's declaration"

## Drawings

Dimensional drawing



Dimensional drawing

# Housing - HC-STA-B16-SLWD-2SSP21-ELC-AL - 1412857

## Classifications

### eCl@ss

eCl@ss 10.0.1	27440202
eCl@ss 11.0	27440202
eCl@ss 5.1	27261200
eCl@ss 6.0	27261200
eCl@ss 7.0	27440202
eCl@ss 9.0	27440202

### ETIM

ETIM 6.0	EC000437
ETIM 7.0	EC000437

### UNSPSC

UNSPSC 13.2	31261501
UNSPSC 18.0	31261501
UNSPSC 19.0	31261501
UNSPSC 20.0	31261501
UNSPSC 21.0	31261501

## Approvals

### Approvals

#### Approvals

UL Recognized / cUL Recognized / EAC / DNV GL / EAC / cULus Recognized

#### Ex Approvals

### Approval details

UL Recognized		<a href="http://database.ul.com/cgi-bin/XYV/template/LISEXT/1FRAME/index.htm">http://database.ul.com/cgi-bin/XYV/template/LISEXT/1FRAME/index.htm</a>	E255026
---------------	--	---	---------

cUL Recognized		<a href="http://database.ul.com/cgi-bin/XYV/template/LISEXT/1FRAME/index.htm">http://database.ul.com/cgi-bin/XYV/template/LISEXT/1FRAME/index.htm</a>	E255026
----------------	--	---	---------

# Housing - HC-STA-B16-SLWD-2SSP21-ELC-AL - 1412857

## Approvals

EAC		RU C- DE.AI30.B.01102
-----	--	--------------------------

DNV GL		<a href="https://approvalfinder.dnvgl.com/">https://approvalfinder.dnvgl.com/</a>	TAE000037S
--------	--	---	------------

EAC		RU C- DE.BL08.B.00511
-----	--	--------------------------

cULus Recognized		
------------------	--	--

## Accessories

### Accessories

Corrugated pipe screw connection

Screw connection - WP-G HF IP66 PG21 BK - 3240892



Cable gland, Pg thread, IP66 protection, straight

Screw connection - WP-G HF IP69K PG21 BK - 3240878



Cable gland, Pg thread, IP68/69k protection, straight

## Housing - HC-STA-B16-SLWD-2SSP21-ELC-AL - 1412857

### Accessories

Screw connection - WP-GA HF IP66 PG21 BK - 3240920



Cable gland, Pg thread, IP66 protection, angled

---

Screw connection - WP-GA HF IP69K PG21 BK - 3240906



Cable gland, Pg thread, IP68/69k protection, angled

---

Screw connection - WP-GR HF IP66 PG21 BK - 3240948



Cable gland, Pg thread, IP66 protection, with strain relief

---

Screw connection - WP-GR HF IP69K PG21 BK - 3240934



Cable gland, Pg thread, IP68/69k protection, with strain relief

---

Screw connection - WP-G PP HF PG21 - 3240992



Cable gland made from PP with Pg thread, IP65 protection

---

## Housing - HC-STA-B16-SLWD-2SSP21-ELC-AL - 1412857

### Accessories

Screw connection - WP-GT PP HF PG21 - 3241006



Cable gland made from PP with Pg thread, rotatable, IP54 protection

---

Screw connection - WP-G BRASS IP40 PG21 - 3241041



Cable gland made from brass with Pg thread, IP40 protection

---

Screw connection - WP-GT BRASS PG21 - 3241027



Cable gland made from brass with Pg thread, rotatable, IP40 protection

---

Screw connection - WP-G BRASS IP65 PG21 - 3241055



Cable gland made from brass with Pg thread, IP65 protection

---

### Full screw connection

Cable gland - G-INS-PG21-M68N-NNES-S - 1411175



Cable gland, cable gland material: Nickel-plated brass, external cable diameter 13 mm ... 18 mm, shielding: no, connecting thread: Pg21, color: silver, with O-ring

---

## Housing - HC-STA-B16-SLWD-2SSP21-ELC-AL - 1412857

### Accessories

Cable gland - G-INSEC-PG21-M68N-NNES-S - 1411200



Cable gland, cable gland material: Nickel-plated brass, external cable diameter 13 mm ... 18 mm, shielding: yes, connecting thread: Pg21, color: silver, with O-ring

---

### Housing latches

Housing brackets - HC-STA-B10-24-DL-PLBK - 1412886



Double locking latch for B10 / B16 / B24 housing, HC-EVO....AL and HC-STA....AL

---

### Seal

Profile gasket - HC-B16-SP-CBK - 1411480



Profile gasket for HEAVYCON EVO supporting base element type B16, conductive