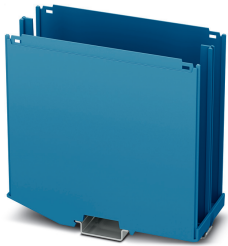


Mounting base housing - ICS50-B122X98-O-O-5015 - 1118652

Please be informed that the data shown in this PDF Document is generated from our Online Catalog. Please find the complete data in the user's documentation. Our General Terms of Use for Downloads are valid (<http://phoenixcontact.com/download>)



DIN rail housing, Lower housing part with metal foot catch, width: 50.1 mm, height: 122.5 mm, depth: 108.35 mm, color: blue (5015), cross connection: DIN rail connector (optional), number of positions cross connector: 8

Your advantages

- ✓ Flexible use, thanks to the modular system and unique modularity in the connection technology
- ✓ Standardized connections such as RJ45, USB, D-SUB and antenna sockets as components that can be integrated
- ✓ Optimal space utilization, as well as adaptability of design, colors, and printing
- ✓ Eight-position DIN rail connectors with parallel and up to two serial contacts for easy module-to-module communication



Key Commercial Data

| | |
|--------------------------------------|---------------|
| Packing unit | 1 pc |
| Minimum order quantity | 10 pc |
| GTIN | |
| GTIN | 4063151046354 |
| Weight per Piece (excluding packing) | 76.000 g |
| Custom tariff number | 85389099 |
| Country of origin | Germany |

Technical data

Item properties

| | |
|---------------------------|------------------------|
| Brief article description | Mounting base housing |
| Type | ICS50-B122X98-O-O-5015 |
| Order No. | 1118652 |
| Housing type | DIN rail housing |

Mounting base housing - ICS50-B122X98-O-O-5015 - 1118652

Technical data

Item properties

| | |
|------------------------------|--|
| Housing series | ICS |
| Range of articles | ICS50 |
| Type | Lower housing part with metal foot catch |
| Max. IP code to attain | IP20 |
| Mounting type | DIN rail mounting |
| Number of levels | 4 |
| Connection levels | 4 (Both sides) |
| Ventilation openings present | no |
| Max. number of positions | 64 (pitch: 5 mm) 80 (pitch: 3.5 mm) |

Dimensions

| | |
|---------------------------------------|--|
| Width [w] | 50.1 mm |
| Height [h] | 122.5 mm |
| Depth [d] | 108.35 mm |
| Depth from top edge of DIN rail [d] | 98.15 mm |
| Dimensions | 50 mm x 122 mm x 110 mm (Lower housing part with upper housing part) |

Material data

| | |
|--|-------------|
| Housing material | Polyamide |
| Surface characteristics | untreated |
| Color (RAL) | blue (5015) |
| Flammability rating according to UL 94 | V0 |

Ambient conditions

| | |
|---|--|
| Ambient temperature (storage/transport) | -40 °C ... 55 °C |
| Ambient temperature (assembly) | -5 °C ... 100 °C |
| Ambient temperature (operation) | -40 °C ... 105 °C (depending on power dissipation) |
| Relative humidity (storage/transport) | 80 % |

PCB data

| | |
|-----------------------|--------------------------------|
| Number of PCB holders | 4 |
| Mounting position | Vertical (horizontal DIN rail) |
| Type of PCB mount | Latching |

Mechanical strength/tumbling barrel

| | |
|-----------------------|------------------------|
| Specification | IEC 60068-2-31:2008-05 |
| Height of fall | 50 cm |
| Number of drop cycles | 50 |

Vibration test

Mounting base housing - ICS50-B122X98-O-O-5015 - 1118652

Technical data

Vibration test

| | |
|------------------------|------------------------|
| Specification | IEC 60068-2-6:2007-12 |
| Frequency | 10 - 150 - 10 Hz |
| Sweep speed | 1 octave/min |
| Amplitude | 0.15 mm (10 - 58.1 Hz) |
| Acceleration | 2g (58.1 - 150 Hz) |
| Test duration per axis | 2.5 h |
| Test directions | X-, Y- and Z-axis |

Shock

| | |
|--------------------------------|-----------------------------------|
| Specification | IEC 60068-2-27:2008-02 |
| Pulse shape | Semi-sinusoidal |
| Acceleration | 15g |
| Shock duration | 11 ms |
| Number of shocks per direction | 3 |
| Test directions | X-, Y- and Z-axis (pos. and neg.) |

Thermostability (Ball Thrust Test)

| | |
|---------------|------------------------|
| Specification | IEC 60695-10-2:2014-02 |
| Temperature | 125 °C |
| Test duration | 1 h |
| Force | 20 |

Test for assessing the risk of fire (glow wire)

| | |
|------------------|------------------------|
| Specification | IEC 60695-2-11:2014-02 |
| Temperature | 850 °C |
| Time of exposure | 30 s |

Testing for paint wetting impairment substances (LABS-conformity)

| | |
|---------------|----------------------|
| Specification | VW PV 3.10.7:2005-02 |
|---------------|----------------------|

Degrees of protection provided by housings (IP code)

| | |
|---------------------------------------|---|
| Specification | IEC 60529:1989-11 + AMD 1:1999-11 + AMD 2:2013-08 |
| Result, degree of protection, IP code | IP20 |

Protection against electric shock

| | |
|---|---|
| Specification | IEC 60529:1989-11 + AMD 1:1999-11 + AMD 2:2013-08 |
| Requirements, protection against electric shock | It must not be possible to touch any conductive part with the IEC test finger and a test force of 10 N. |

General information

| | |
|--------------|-----------------------|
| Type of note | Assembly instruction: |
|--------------|-----------------------|

Mounting base housing - ICS50-B122X98-O-O-5015 - 1118652

Technical data

General information

| | |
|--------------|---|
| Note | Refer to the data sheet for the range in the download area. |
| Type of note | Recommendation |
| Note | Material of contact pads for bus connector, galvanic gold (hard gold) |

Packaging information

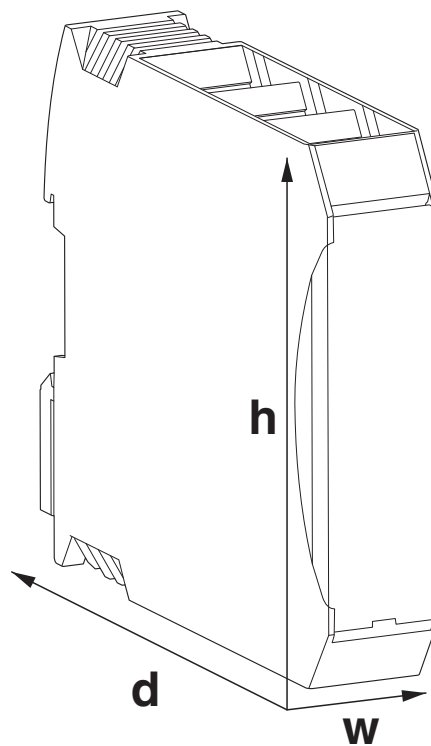
| | |
|----------------------------|---------------------|
| Type of packaging | packed in cardboard |
| Pieces per package | 5 |
| Denomination packing units | Pcs. |
| Outer packaging type | Carton |

Standards and regulations

| | |
|--|----|
| Flammability rating according to UL 94 | V0 |
|--|----|

Drawings

Dimensional drawing



Mounting base housing - ICS50-B122X98-O-O-5015 - 1118652

Classifications

eCl@ss

| | |
|---------------|----------|
| eCl@ss 10.0.1 | 27182702 |
| eCl@ss 11.0 | 27182702 |
| eCl@ss 9.0 | 27182702 |

Accessories

Accessories

Component housing upper part

Upper part of housing - ICS50-C122X12-5015 - 1076904

DIN rail housing, Upper part, closed, width: 50 mm, height: 122 mm, depth: 12 mm, color: blue (5015)



Upper part of housing - ICS50-TL122X12-5015 - 1076903

DIN rail housing, Upper part, with transparent hinged cover, width: 50 mm, height: 122 mm, depth: 12 mm, color: blue (5015)



Connection plate

Connection plate - ICS25-F22S-7035 - 2203890



DIN rail housing, ICS filler, closed, width: 25 mm, height: 7 mm, depth: 22.5 mm, color: light gray (7035)

Connection plate - ICS25-F45S-7035 - 2203891



DIN rail housing, ICS filler, closed, width: 25 mm, height: 7 mm, depth: 45 mm, color: light gray (7035)

Mounting base housing - ICS50-B122X98-O-O-5015 - 1118652

Accessories

Connection plate - ICS25-F22V-7035 - 1079495



DIN rail housing, ICS filler, with vents, width: 25 mm, height: 7 mm, depth: 22.5 mm, color: light gray (7035)

Connection plate - ICS25-F45V-7035 - 1079492



DIN rail housing, ICS filler, with vents, width: 25 mm, height: 7 mm, depth: 45 mm, color: light gray (7035)

Connection plate - ICS25-F22J-7035 - 2203895



DIN rail housing, ICS filler, with RJ45 function cutout, width: 25 mm, height: 7 mm, depth: 22.5 mm, color: light gray (7035)

Connection plate - ICS25-F22U-7035 - 1053046



DIN rail housing, ICS filler, with USB function cutout, width: 25 mm, height: 7 mm, depth: 22.5 mm, color: light gray (7035)

Connection plate - ICS25-F22A-7035 - 2203894



DIN rail housing, ICS filler, with antenna function cutout, width: 25 mm, height: 7 mm, depth: 22.5 mm, color: light gray (7035)

Mounting base housing - ICS50-B122X98-O-O-5015 - 1118652

Accessories

Connection plate - ICS25-F45D15-7035 - 2203896



DIN rail housing, ICS filler, with D-SUB 15 function cutout, width: 25 mm, height: 7 mm, depth: 45 mm, color: light gray (7035)

DIN rail connector

DIN rail bus connectors - TBUS8-25,0-PPPPPPPP-7035 - 2202891



DIN rail connector, color: light gray, nominal current: 6 A (parallel contacts), rated voltage (III/2): 32 V, Number of positions per row: 8, pitch: 2.54 mm, mounting: DIN rail mounting, Locking: without, type of packaging: packed in cardboard, Item with gold-plated contacts, bus connectors for connecting with electronics housings, 8 parallel contacts

DIN rail bus connectors - TBUS8-25,0-PPPPPPPS-7035 - 2202890



DIN rail connector, color: light gray, nominal current: 6 A, 4 A (parallel contacts) (Serial contacts), rated voltage (III/2): 32 V, Number of positions per row: 8, pitch: 2.54 mm, mounting: DIN rail mounting, Locking: without, type of packaging: packed in cardboard, Item with gold-plated contacts, bus connectors for connecting with electronics housings, 7 parallel contacts/1 serial contact

DIN rail bus connectors - TBUS8-25,0-PPPPPPSS-7035 - 2202895



DIN rail connector, color: light gray, nominal current: 6 A, 4 A (parallel contacts) (Serial contacts), rated voltage (III/2): 32 V, Number of positions per row: 8, pitch: 2.54 mm, mounting: DIN rail mounting, Locking: without, type of packaging: packed in cardboard, Item with gold-plated contacts, bus connectors for connecting with electronics housings, 6 parallel contacts/2 serial contacts

PCB header

Feed-through header - ICC25-H/4L5,0-7035 - 2203902



PCB header, nominal cross section: 2.5 mm², color: light gray, nominal current: 16 A, rated voltage (III/2): 320 V, type of contact: Male connector, Number of potentials: 4, Number of rows: 1, Number of positions per row: 4, number of connections: 4, product range: ICC..-H/..L5,0, pitch: 5 mm, mounting: Wave soldering, pin layout: Linear pinning, solder pin [P]: 3.5 mm, Locking: Snap-in locking, type of packaging: Box packaging, Product with pin output on left side

Mounting base housing - ICS50-B122X98-O-O-5015 - 1118652

Accessories

Feed-through header - ICC25-H/4R5,0-7035 - 2203903



PCB header, nominal cross section: 2.5 mm², color: light gray, nominal current: 16 A, rated voltage (III/2): 320 V, type of contact: Male connector, Number of potentials: 4, Number of rows: 1, Number of positions per row: 4, number of connections: 4, product range: ICC..-H/..R5,0, pitch: 5 mm, mounting: Wave soldering, pin layout: Linear pinning, solder pin [P]: 3.5 mm, Locking: Snap-in locking, type of packaging: Box packaging, Product with pin output on right side

PCB plug

Printed-circuit board connector - PSPT 2,5/ 4-ST KMGY - 2202344



PCB connector, nominal cross section: 2.5 mm², color: light gray, nominal current: 16 A, rated voltage (III/2): 300 V, contact surface: Tin, type of contact: Female connector, Number of potentials: 4, Number of rows: 1, Number of positions per row: 4, number of connections: 4, product range: PSPT 2,5/..-ST, pitch: 5 mm, connection method: Push-in spring connection, conductor/PCB connection direction: 0 °, Locking clip: - Locking clip, Locking: without, type of packaging: packed in cardboard, Color of the spring lever: orange

Printed-circuit board connector - MSTBT 2,5 HC/ 4-STP GY7035 - 2200332



PCB connector, nominal cross section: 2.5 mm², color: light gray, nominal current: 16 A, rated voltage (III/2): 320 V, contact surface: Tin, type of contact: Female connector, Number of rows: 1, Number of positions per row: 4, product range: MSTBT 2,5 HC/..-STP, pitch: 5 mm, connection method: Screw connection with tension sleeve, conductor/PCB connection direction: 0 °, plug-in system: POWER COMBICON 2,5, Locking: without
