

PTi 50/220...240 S

POWERTRONIC INTELLIGENT PTi S | ECG for HID lamps, for installation in luminaires



Areas of application

- Shop lighting
- Health and fitness areas (in dry, corrosion-protected place)
- Effect and accent lighting

Product benefits

- Long reliable life at maximum permitted temperatures
- Compact dimensions and low weight for small luminaire designs
- Excellent thermal behavior for very high limit temperatures t_c and t_a
- Automatic safety shutdown of lamps in the event of a defect or at end of life (EoL)

Product features

- Energy Efficiency Index EEI: A2
- Supply voltage: 220...240 V
- Line frequency: 50...60 Hz
- RI suppression: to EN 55015/CISPR 15
- Safety: to EN 61347-2-12
- Line harmonics according to EN 61000-3-2
- Immunity according to EN 61547

Technical data

Electrical data

Lamp wattage	50 W
Line current	0.24 A ¹⁾
Ignition voltage	4.5 kVp
Operating frequency	0.200...0.240 kHz
System wattage	54.50 W
ECG efficiency	92 %
Input voltage	220...240 V
Voltage range	198...264 V
Mains frequency	50...60 Hz
Power factor λ	0.95 ²⁾
Inrush current	45 A ³⁾
Max. no. of ECGs on circuit breaker 10 A	7 ⁴⁾
Max. no. of ECGs on circuit breaker 16 A	13 ⁴⁾
Max. no. of ECGs on 16A MCB with EBN-OS	32 ⁴⁾
Protective conductor current	0.25 mA
U-OUT	250 V
Max. working voltage between LH and LL	250 V
Max. working voltage betw. LL/LH & earth	250 V
Max. capacitance of wire ECG/lamp	120 pF

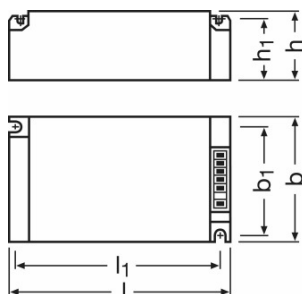
1) At 230 V_{AC}

2) Minimum

3) $t_{width} = 250 \mu s$ (measured at 50 % I_{peak})

4) Type B

Dimensions & weight



Length	110.0 mm
Width	75.0 mm

Product datasheet

Height	30.0 mm
Mounting hole spacing, length	99.0 mm
Mounting hole spacing, width	64.0 mm
Cable cross-section, input side	0.5...2.5 mm ²
Cable cross-section, output side	0.5...2.5 mm ²
Wire preparation length, input side	10...11 mm
Wire preparation length, output side	10...11 mm
Product weight	255.00 g

Colors & materials

Casing material	Metal
-----------------	-------

Temperatures

Ambient temperature range	-25...+60 °C
Maximum temperature at tc test point	85 °C

Lifespan

ECG lifetime	50000 h ¹⁾
--------------	-----------------------

¹⁾ At maximum T_c / 10 % failure rate

Additional product data

Design / version	Built-in unit
------------------	---------------

Capabilities

Maximum wiring length ECG/lamp	1.5 m
Overheating protection	Power reduction and switch off at T > 85 °C at the tc point
Overvoltage protection at 275...300 V	48 h ¹⁾
Overvoltage protection at 300...320 V	2 h ¹⁾
Overvoltage protection at 320...350 V	5 min ²⁾
ECG reset time	> 0.5 s
Dimmable	No
Restriction on ignition time	20 min
Suitable for fixtures with prot. class	I

¹⁾ Control gear switches off after 40 s

²⁾ Control gear switches off or does not start

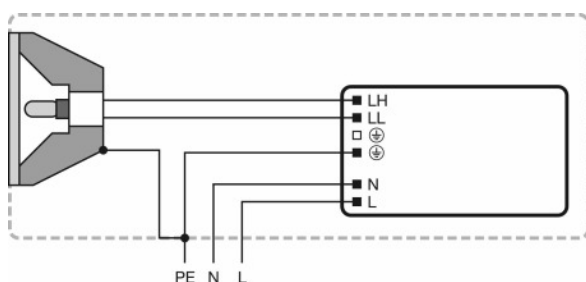
Certificates & standards

Approval marks – approval	ENEC 10 / VDE / VDE-EMC / GOST / C-Tick
Type of protection	IP20

Product datasheet

EEI – Energy Label	A2
Standards	acc. to EN 61347-2-12/acc. to EN 55015/acc. to EN 61000-3-2/acc. to EN 61547

Wiring Diagram



Wiring diagram


Thermal characteristics

Ballast losses and lamp heat radiation can lead to heat accumulation in a completely closed case. Therefore it is necessary to ensure that the temperature at the measuring point t_c of the ECG does not exceed the maximum value.






Attention!

For safety reasons disconnect the device before replacing the lamp!
Any conductive material must have a minimum distance of 4 mm to the front of the terminal block.
Installation by qualified electrician only.
Terminals for protective earth not suitable for any through connection.

Download Data

File	
	Tender Documents Tender Document for POWERTRONIC EVG.eng

Product datasheet

	Certificates PTi - PTo - PTg VDE-ENEC-Cert
	Declarations of conformity Declaration of conformity PTi 35, PTi 70
	Declarations of conformity VDE Declaration
	Declarations of conformity EC-Declaration of Conformity
	Declarations of conformity VDE Declaration of conformity

Logistical Data

Product code	Product description	Packaging unit (Pieces/Unit)	Dimensions (length x width x height)	Volume	Gross weight
4008321955852	PTi 50/220...240 S	Shipping carton box 20	412 mm x 152 mm x 136 mm	8.52 dm ³	5270.00 g

The mentioned product code describes the smallest quantity unit which can be ordered. One shipping unit can contain one or more single products. When placing an order, for the quantity please enter single or multiples of a shipping unit.

Disclaimer

Subject to change without notice. Errors and omission excepted. Always make sure to use the most recent release.