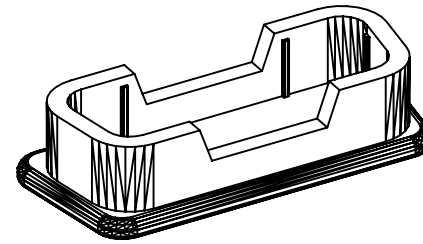
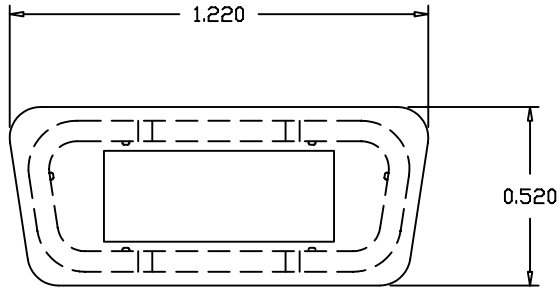
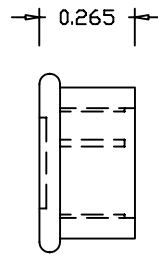
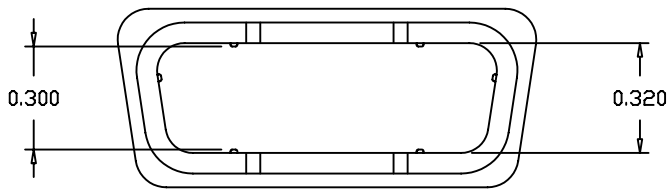
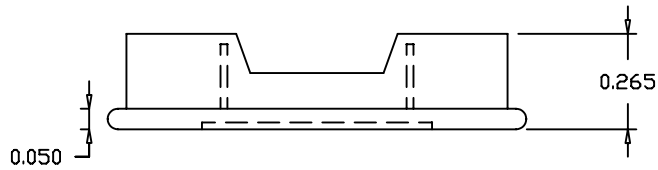


REV	DATE	DESCRIPTION	APP



SOLID MODEL



NOTES:

1. MATERIAL: LOW DENSITY POLYETHYLENE
2. COLOR: WHITE / TRANSLUCENT
3. COMPLIANCE NOTE:
PART MUST BE IN COMPLIANCE TO:
DIRECTIVE 2002/95/EC of 27 January 2003 [RoHS]

THIS IS A CONTROLLED DOCUMENT AND IS SUBJECT TO CHANGE. CONTACT NORTHERN TECHNOLOGIES ENGINEERING FOR THE LATEST REVISION.

UNLESS OTHERWISE SPECIFIED	SIGNATURES	DATE	Northern Technologies			THIS DRAWING IS THE PROPERTY OF NORTHERN TECHNOLOGIES AND SHOULD NOT BE REPRODUCED WITHOUT NORTHERN TECHNOLOGIES WRITTEN PERMISSION.
1. ALL DIMENSIONS ARE IN INCHES (MM) 2. DIMENSIONS ARE TYPICAL	DRAWN Luis C.	28-SEP-05	PART NUMBER DBE15S			
	CHECKED JSD	28-SEP-05	DESCRIPTION D15S 15 POSITION FEMALE DUST CAP [RoHS]			
	ENG		SHEET 1	CODE 7100_125	DWG NO. 7100-500-125	
	ISSUED	28-SEP-05	SCALE N.T.S.			SHEET 1 OF 1