

MICRO SWITCH
a Honeywell Division

FED. MFG. CODE 91929

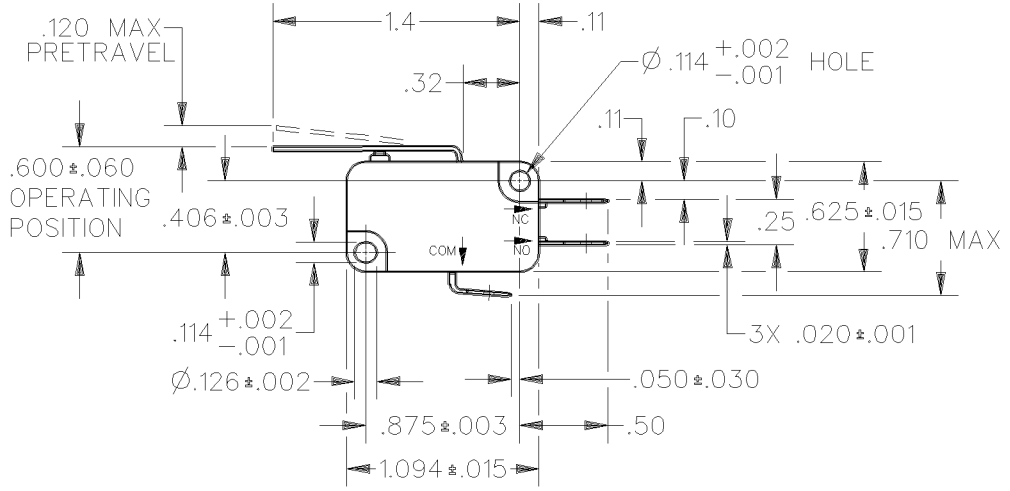
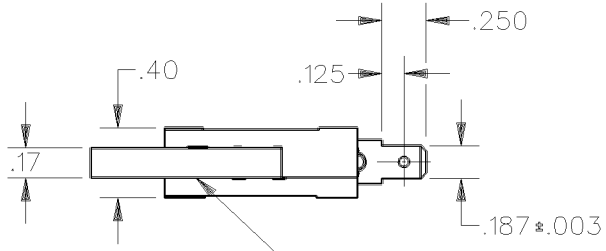
SWITCH — BASIC

CATALOG LISTING

V3L-3314-D8

CQ-X2811

CATALOG LISTING
V3L-3314-D8
 PAGE 1 OF 1
 RELEASE NO. PR-21679
 REPLACES
 ISSUE 1
 CHECK
 REVISIONS
 CHECK
 DDM/CAD
 DRAWN
 10 MAY 95
 CHECK
 DCS



ANSI Y14.5M-1982 APPLIES

THIS DRAWING COVERS A PROPRIETARY ITEM AND IS THE PROPERTY OF MICRO SWITCH, A DIVISION OF HONEYWELL. THIS DRAWING IS NOT TO BE COPIED OR USED WITHOUT THE APPROVAL OF MICRO SWITCH.



CHARACTERISTICS	ELECTRICAL DATA	SCALE FULL	DO NOT SCALE PRINT
OPERATING FORCE — — — 88 GRAMS MAX	CONTACT ARRANGEMENT S P D T	UNLESS OTHERWISE SPECIFIED TOLERANCES ARE	
RELEASE FORCE — — — 6 GRAMS MIN	L112 10A 1/3HP 125 OR 250 VAC 1/2A 125 VDC, 1/4A 250 VDC 4A 125 VAC "L"	ONE PLACE (.0)	±.030
DIFFERENTIAL TRAVEL — — — .032 MAX		TWO PLACE (.00)	±.015
OVERTRAVEL — — — — .090 MIN		THREE PLACE (.000)	±.005
RELEASE TRAVEL — — — — .017 MIN		ANGLES	±
		WEIGHT	