

**MICRO SWITCH**  
 FREEPORT, ILLINOIS U.S.A.  
 A DIVISION OF HONEYWELL  
 FED. MFG. CODE 91929

**SWITCH - ENCLOSED**

CATALOG LISTING  
**842EN34-6**  
 CUSTOMER PART NO.  
**ST5MI270-002**

**M 842EN34-6**

DRAWING NUMBER

ISSUE

REVISIONS

A	CO	55607	
	MAM	13 AUG 84	
B	CO	55981	
	KJS	5 NOV 84	
C	CO	57370	
	MAM	15 MAY 85	
D	0006802		
	TCC/AP	30 AUG 04	
E	0040375		
	RS	06JUN08	

REPLACES

PR-12830

CHECK

06JUN08

CMH

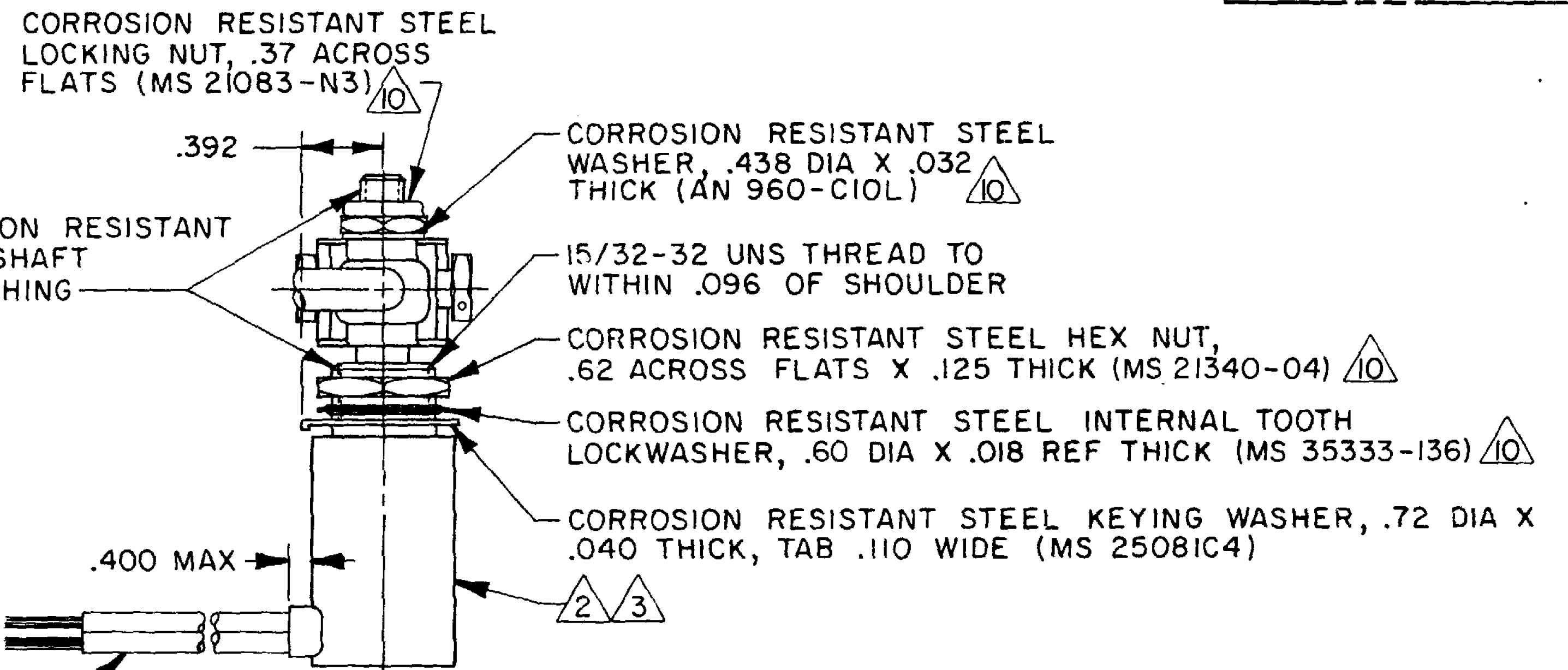
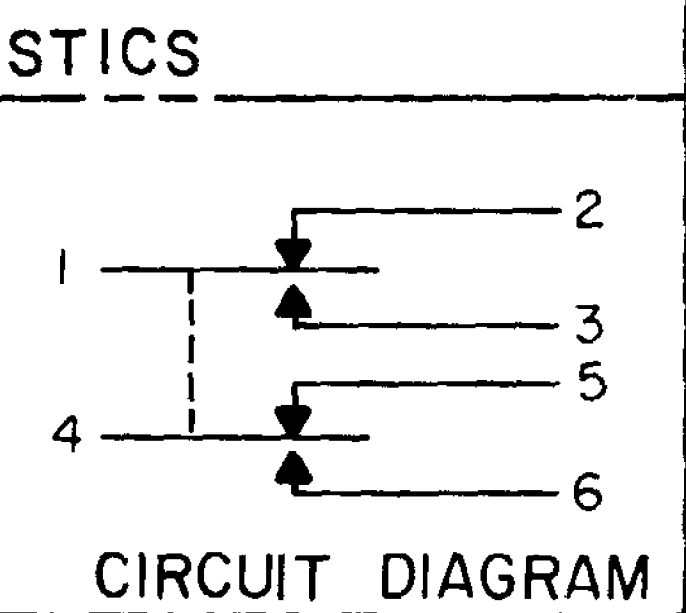
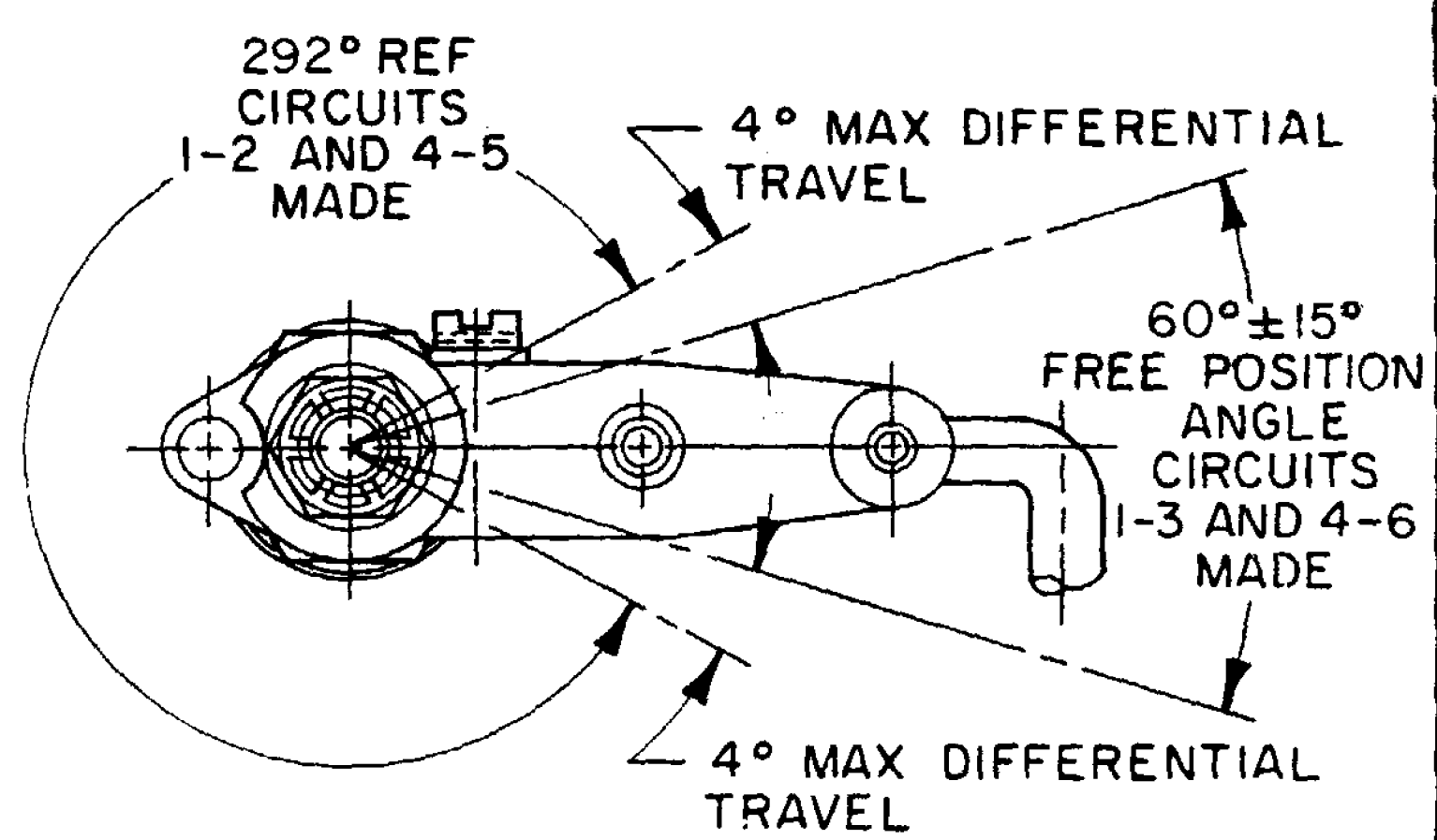
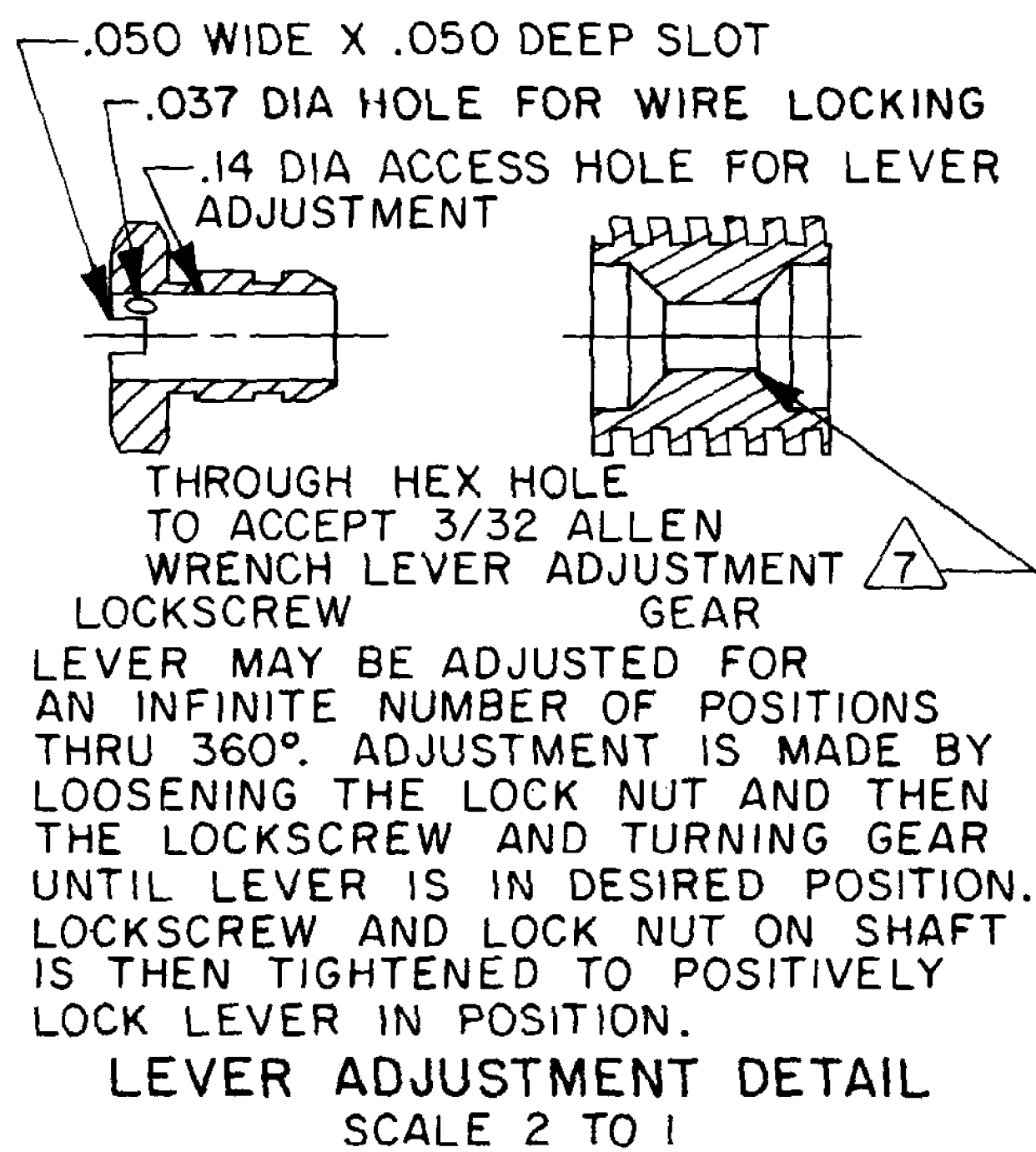
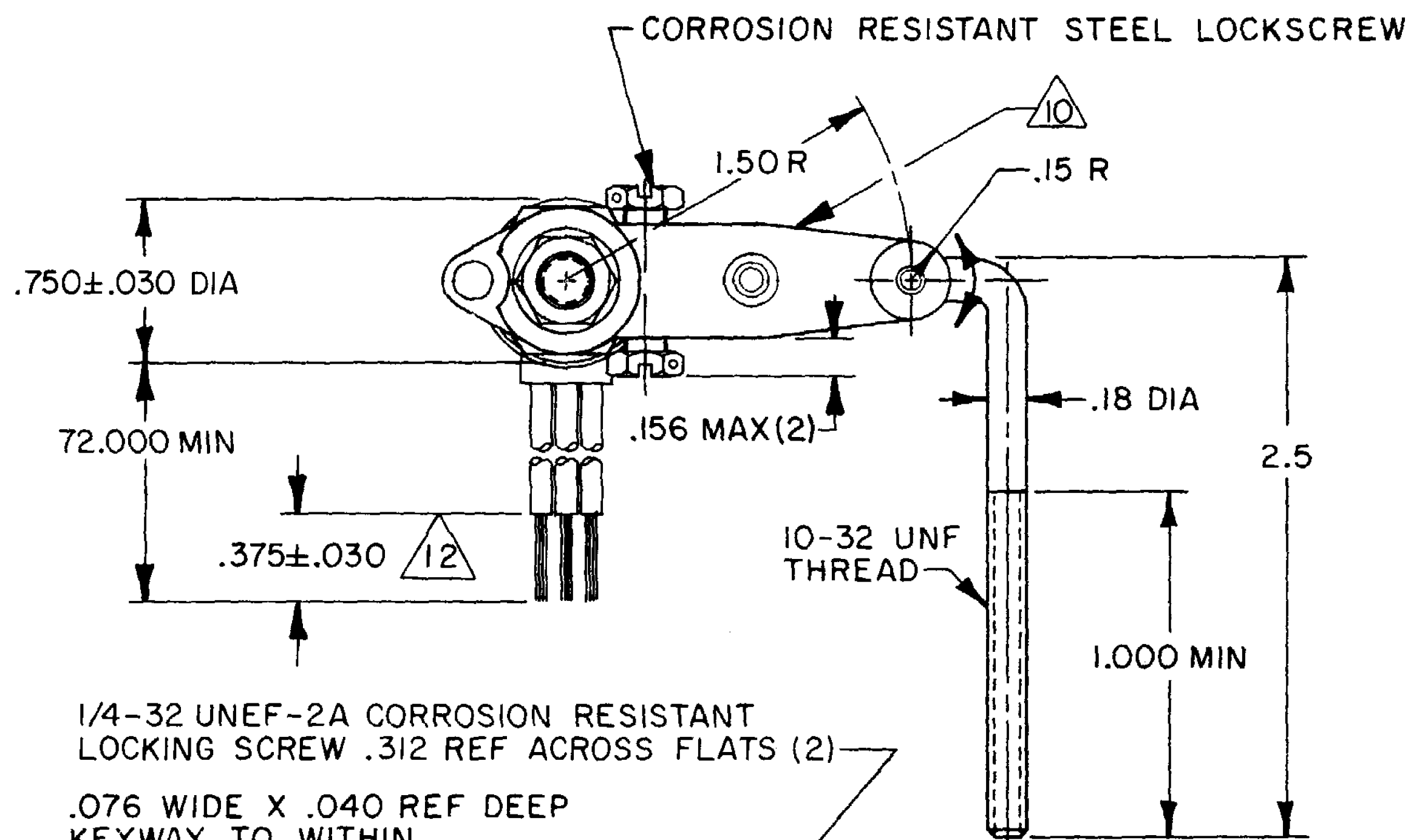
CHECK

9 MAR 84

CHECK

29 FEB 84

FO-5285 1-A



- NOTES**
- 1 - ALL EXPOSED PARTS ARE CORROSION RESISTANT
  - 2 - CUSTOMER PART # PERMANENTLY MARKED ON SIDE OF SWITCH
  - 3 - MICRO IDENTIFICATION AND CIRCUIT DIAGRAM PERMANENTLY MARKED ON SIDE OF SWITCH
  - 4 - UNIT PROVIDES NO SHAFT RESTORING TORQUE. THE ACTUATING DEVICE MUST CONTROL MOVEMENT OF THE SHAFT
  - 5 - CIRCUIT DIAGRAM SHOWN WITH SWITCH IN OPERATED POSITION
  - 6 - DO NOT APPLY MORE THAN 20-25 INCH-LBS OF TORQUE WHEN TIGHTENING LOCKING NUT
  - 7 - WORM GEAR TO TURN WITH 6 IN-LB MAX TORQUE WITH SCREWS LOCKED OUT TIGHT
  - 8 - NOTED ELECTRICAL RATINGS APPLY AS SPECIFIED IN MIL-PRF-8805/39 UP TO +185°F
  - 9 - SWITCH SEALED PER MIL-PRF-8805 SYMBOL 4
  - 10 - HARDWARE MAY BE PACKAGED UNASSEMBLED PER MIL-PRF-8805
  - 11 - NOTED OPERATING TORQUE RATING APPLIES AT -55°C TO +85°C AND +177°C FOR 20 MIN.
  - 12 - SOLDER TIN END OF LEADWIRE

THIS DRAWING COVERS A PROPRIETARY ITEM AND IS THE PROPERTY OF MICRO SWITCH, A DIVISION OF HONEYWELL. THIS DRAWING IS NOT TO BE COPIED OR USED WITHOUT THE APPROVAL OF MICRO SWITCH.		THIRD ANGLE PROJECTION	SCALE FULL
CHARACTERISTICS		ELECTRICAL DATA	
OPERATING TORQUE-----24 IN OZ MAX		CONTACT ARRANGEMENT	
OPERATING TORQUE AT +22°C-----16 IN OZ MAX		S P D T (2)	
PRETRAVEL		LOAD	
DIFFERENTIAL TRAVEL		SEA LEVEL	
OVERTRAVEL		50,000 FT.	
FREE POSITION		RES	
SEE DETAIL		IND	
		MOTOR	
		LAMP	
		WEIGHT 8.5 OZ	

TOLERANCES			
APPLY TO DESIGN UNITS. CONVERSIONS ARE ONLY FOR REFERENCE. UNLESS NOTED TOLERANCES ARE:			
DIM.	TOL.	DIM.	TOL.
mm	mm/in	in	mm/in
NO PLACES	X	1/64	X X
ONE PLACE	X X	0.4/016	X X X
TWO PLACES	X X X	0.15/006	X X X X
THREE PLACES	X X X X	0.15/006	X X X X X
ANGLES			

DESIGN UNITS:  SI METRIC  U.S. CUSTOMARY

RAW MATERIAL-COMMERCIAL STANDARD MICRO SWITCH STANDARDS APPLY

DIMENSIONS ARE TO BE MET BEFORE PROTECTIVE COATINGS ARE APPLIED