

MICRO SWITCH
a Honeywell Division

FED. MFG. CODE 91929

SWITCH-BASIC

CATALOG LISTING

6XE27-1

CATALOG LISTING
6XE27-1

PAGE 1 OF 1

REPLACES

RELEASE NO. PR-1848

ISSUE
M

5

CHECK

REVISIONS

A	CO-1	80820
K	D	R
5	JUN	95
B	0063672	
KNR	20APR10	

CHECK

20APR10

CMH

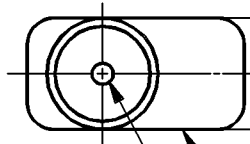
CHECK

5 JUN 95

RASTER

DRAWN

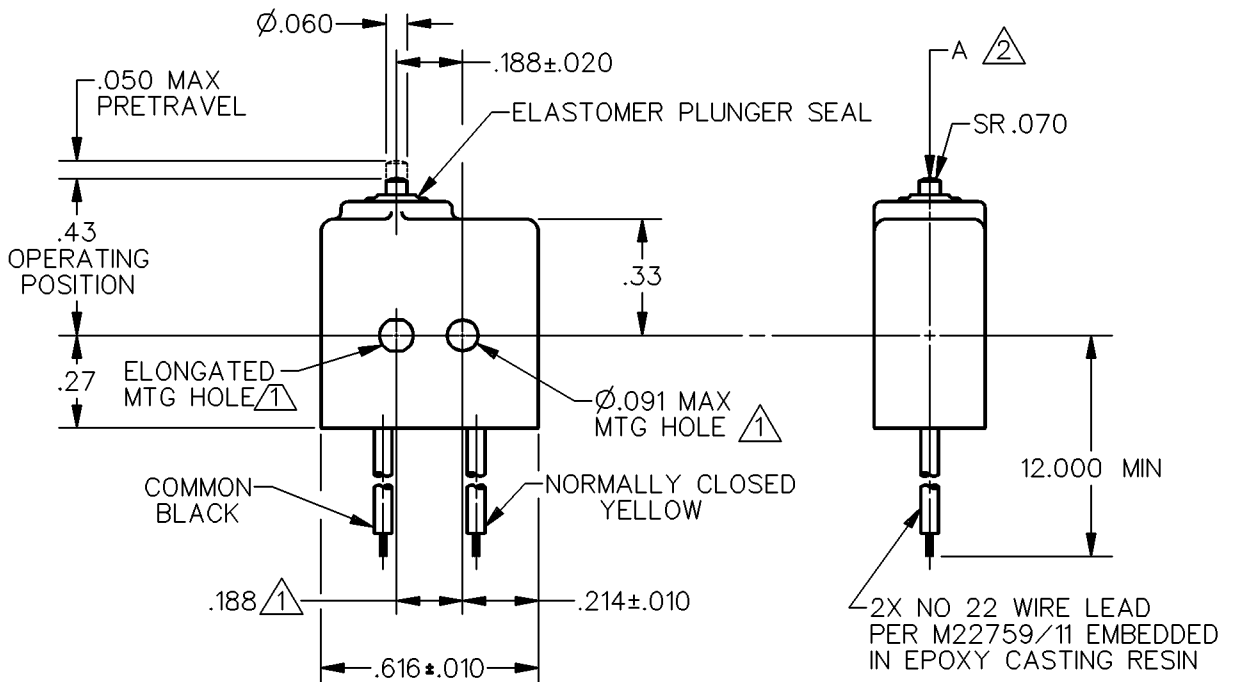
K D R



$.316 \pm .010$

CORROSION RESISTANT TREATED METAL ENCLOSURE

CORROSION RESISTANT STEEL PLUNGER



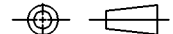
NOTES

- ① MOUNTING HOLES WILL ACCEPT $\phi .087$ MAX PINS OR SCREWS ON $.188 \pm .002$ CENTERS
- ② ACTUATION IN LINE WITH ARROW "A" IS RECOMMENDED
- ③ WEIGHT OF SWITCH ONLY IS .16 OZ MAX. WEIGHT OF SWITCH WITH WIRE LEADS IS 4.00 OZ MAX

ANSI Y14.5M-1982 APPLIES

THIS DRAWING COVERS A PROPRIETARY ITEM AND IS THE PROPERTY OF MICRO SWITCH, A DIVISION OF HONEYWELL. THIS DRAWING IS NOT TO BE COPIED OR USED WITHOUT THE APPROVAL OF MICRO SWITCH.

THIRD ANGLE PROJECTION



CHARACTERISTICS	ELECTRICAL DATA	SCALE 2 TO 1	DO NOT SCALE PRINT
OPERATING FORCE — — — — 10 OZ MAX	CONTACT ARRANGEMENT S P N C	UNLESS OTHERWISE SPECIFIED TOLERANCES ARE	
RELEASE FORCE — — — — 2 OZ MIN		ONE PLACE (.0) ± .030	
RELEASE TRAVEL — — — — .004 MIN		TWO PLACE (.00) ± .015	
DIFFERENTIAL TRAVEL — — — .005 MAX		THREE PLACE (.000) ± .005	
OVERTRAVEL — — — — .004 MIN		ANGLES ±	
		WEIGHT ③	