

MICROSWITCH
a Honeywell Division

FED. MFG. CODE 91929

SWITCH - ENCLOSED

622EN94-6

CATALOG LISTING

CATALOG LISTING
622EN94-6

PAGE 1 OF 1

ISSUE **4**

REVISIONS
A 206228
D L T
8 AUG 02
B 0006563
SPK
27 JUL 04

AK

CHECK

8 AUG 02

SAV

CHECK

8 AUG 02

PTC/CAD 2D

DRAWN

D L T

8 AUG 02

REPLACES -

RELEASE NO. PR-21789

CHECK

AK

CHECK

8 AUG 02

SAV

CHECK

8 AUG 02

DRAWN

D L T

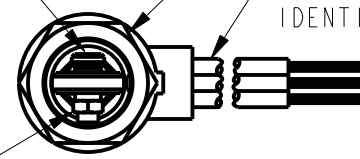
8 AUG 02

STAINLESS STEEL SCREW WITH
.032 WIDE X ∇ .040 SLOT

ROLLER GUIDE MAY BE LOCKED IN
INCREMENTS OF 45° AZIMUTH ∇ 5

6X NO. 20 WIRE LEAD PER MIL-W-22759/7 MARKED WITH CIRCUIT
IDENTIFICATION AND WIRE GAGE (1-20, 2-20, ETC) PER MIL-W-5088

4-40 UNC-3B MINATURE
LOCKNUT-STAINLESS STEEL



ϕ .375 X .106 WIDE CORROSION
RESISTANT STEEL ROLLER

ϕ .047 HOLE
WIRE LOCKING

1.485 \pm .030
FREE
POSITION

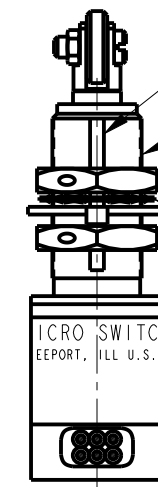
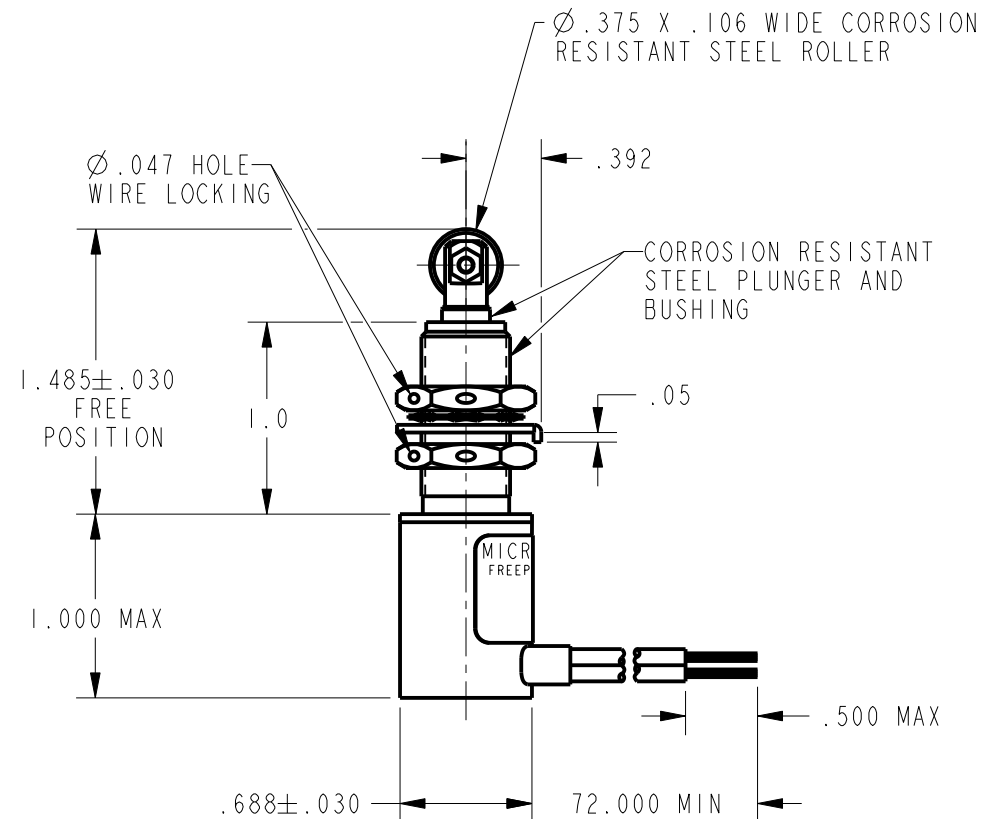
1.0

1.000 MAX

.688 \pm .030

72.000 MIN

.500 MAX



.072 \pm .004 WIDE X ∇ .031 \pm .003 KEYWAY
TO WITHIN .250 OF SHOULDER

15/32-32 UNS-2A THREAD TO WITHIN .093 OF SHOULDER

2X CORROSION RESISTANT STEEL HEX NUT
.62 ACROSS FLATS X .125 THICK ∇ 9

CORROSION RESISTANT STEEL INTERNAL TOOTH
LOCKWASHER ϕ .60 X (.018) THICK (MS 35333-136) ∇ 9

CORROSION RESISTANT STEEL KEYING WASHER
 ϕ .72 X .040 THICK, TAB .110 WIDE (MS 25081C4) ∇ 9

NOTES

- 1 - CORROSION RESISTANT STEEL ENCLOSURE
- 2 - SWITCH SEALED PER MIL-PRF-8805 SYMBOL 4
- 3 - CIRCUIT DIAGRAM AND CATALOG LISTING ARE SHOWN ON NAMEPLATE
- 4 - COINCIDENCE OF OPERATING AND RELEASING POINTS: .010 OF PLUNGER TRAVEL
- ∇ 5 TO ADJUST ROLLER DIRECTION REMOVE LOCK NUT, SCREW AND ROLLER. DEPRESS PLUNGER UNTIL IT CAN BE ROTATED TO DESIRED POSITION. RETURN PLUNGER TO FREE POSITION AND REASSEMBLE ROLLER
- ∇ 6 CIRCUIT 1-2-3 HAS SILVER CONTACT BASIC, CIRCUIT 4-5-6 HAS GOLD CONTACT BASIC
- ∇ 7 GOLD CONTACT BASIC
- ∇ 8 SILVER CONTACT BASIC

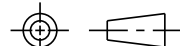
LOAD	28 VDC	
	SEA LEVEL	50,000 FT
RES	1	1
IND	0.5	0.5

LOAD	28 VDC	
	SEA LEVEL	50,000 FT
RES	7	7
IND	4	2.5
MOTOR	4	

- ∇ 9 HARDWARE MAY BE PACKAGED UNASSEMBLED PER MIL-PRF-8805
- 10 - PLUNGER SEAL MATERIAL: ETHYLENE PROPYLENE
- 11 - SKYDROL RESISTANT CONSTRUCTION

THIS DRAWING COVERS A PROPRIETARY ITEM AND IS THE PROPERTY OF MICRO SWITCH, A DIVISION OF HONEYWELL. THIS DRAWING IS NOT TO BE COPIED OR USED WITHOUT THE APPROVAL OF MICRO SWITCH

THIRD ANGLE PROJECTION



CHARACTERISTICS

OPERATING FORCE ----- 6 - 12 LB
FULL OVERTRAVEL FORCE ----- 30 LB MAX
RELEASE FORCE ----- 4 LB MIN
PRETRAVEL ----- .040 MAX
DIFFERENTIAL TRAVEL ----- .020 MAX
OVERTRAVEL ----- .125 MIN

ELECTRICAL DATA

CONTACT ARRANGEMENT
2X S P D T



SCALE FULL

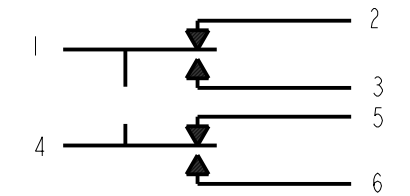
DO NOT SCALE PRINT

UNLESS OTHERWISE SPECIFIED
TOLERANCES ARE

ONE PLACE (.0) \pm .030
TWO PLACE (.00) \pm .015
THREE PLACE (.000) \pm .005
ANGLES \pm

WEIGHT 8.0 OZ MAX

ANSI Y14.5M-1982 APPLIES



CIRCUIT DIAGRAM