

MICRO SWITCH
 FREEPORT, ILLINOIS, U.S.A.
 A DIVISION OF HONEYWELL
 FED. MFG. CODE 91929

SWITCH - ENCLOSED

CATALOG LISTING
44EN1-6
 MILITARY STANDARD
 MS 24420-4

44EN1-6

M

DRAWING NUMBER

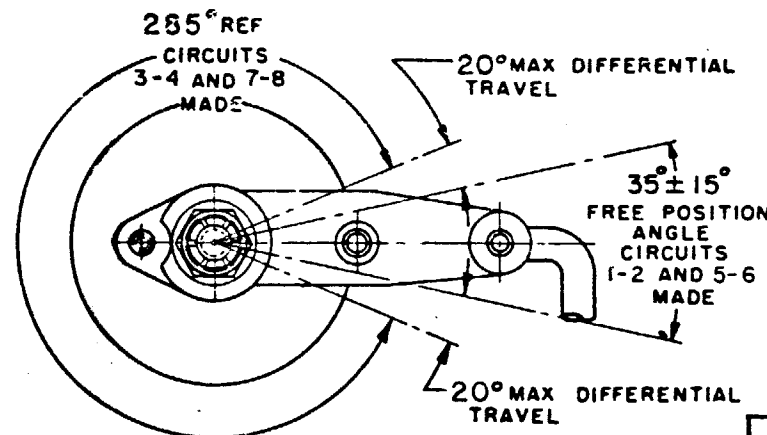
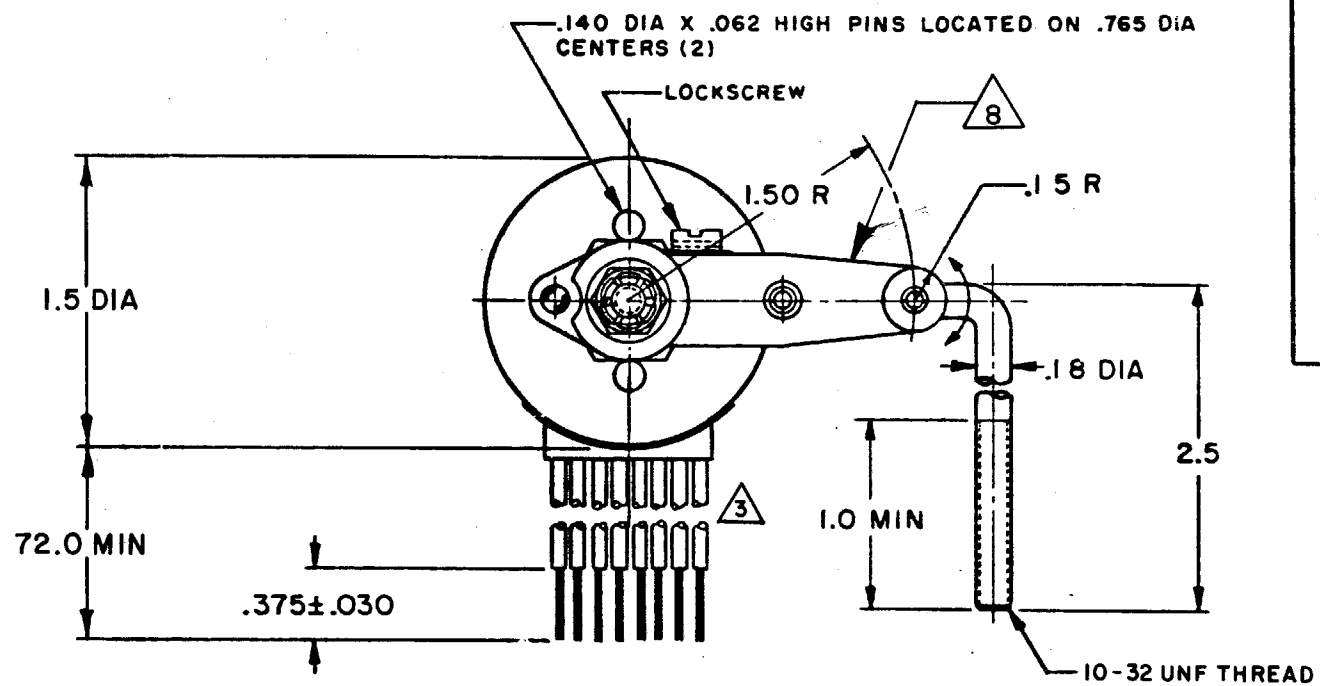
ISSUE

2826
2728

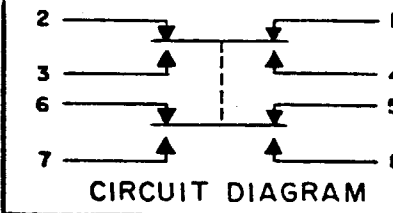
REVISIONS

| | | | |
|---|-----------|--------|------------|
| A | NEW Dwg | CO4445 | 14 NOV 78 |
| B | CO47573 | TSM | 11 AUG 80 |
| C | CO49806 | DJW | 25 SEPT 81 |
| D | CO75787-C | D A W | 16 MAY 94 |

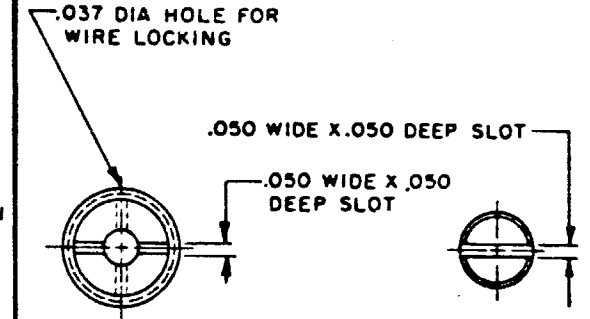
REPLACES SR-5109
 CHECK 27 NOV 78
 CHECK 14 NOV 78
 DRAWN
 T R F



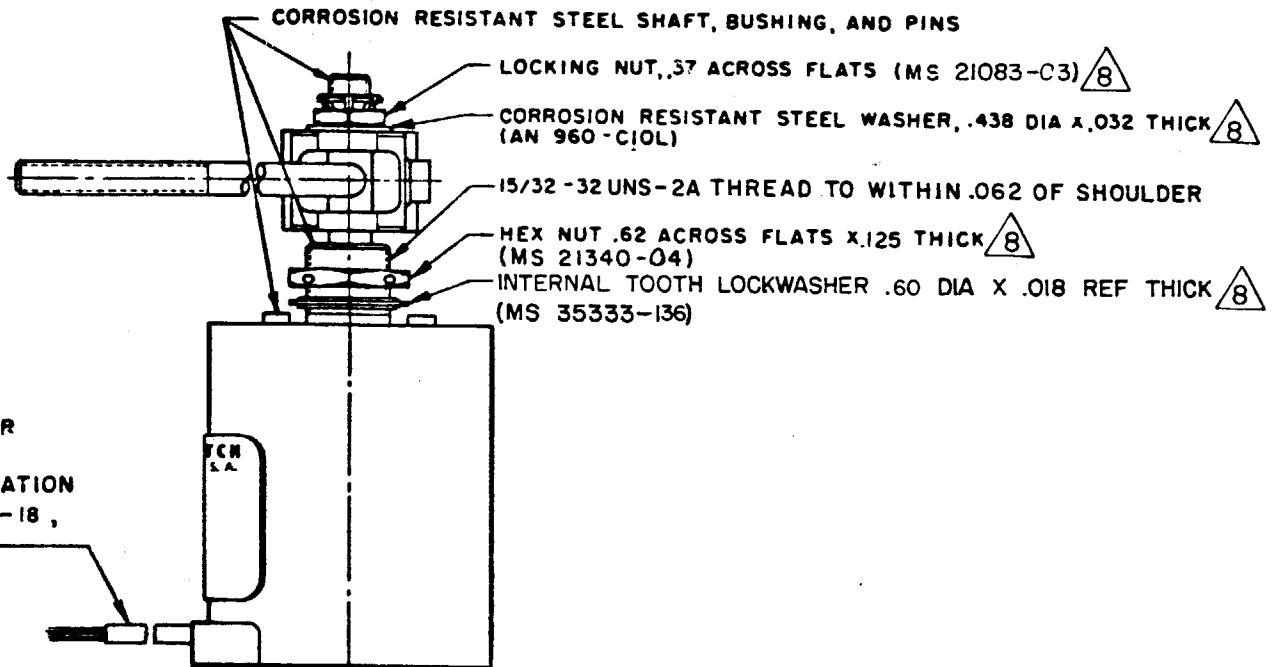
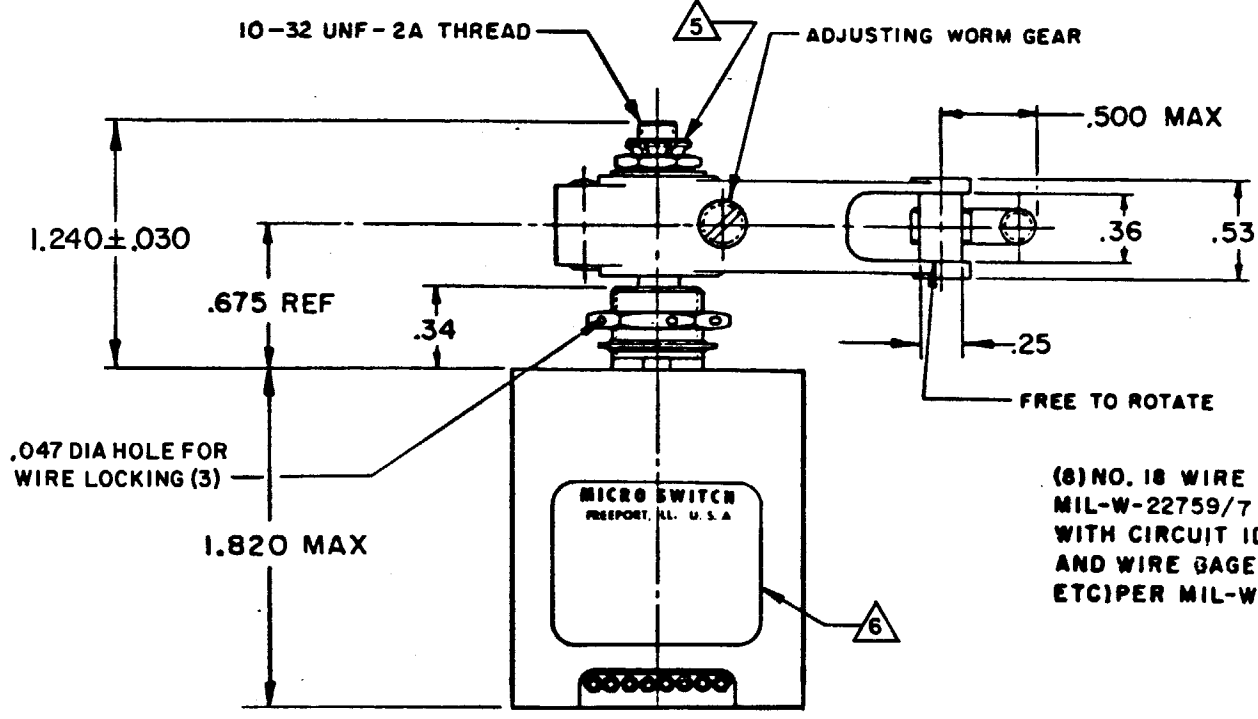
CHARACTERISTICS



CIRCUIT DIAGRAM



LOCKSCREW GEAR LEVER MAY BE ADJUSTED FOR AN INFINITE NUMBER OF POSITIONS THRU 360°. ADJUSTMENT IS MADE BY LOOSENING THE LOCKING NUT AND THEN THE LOCKSCREW AND TURNING GEAR UNTIL LEVER IS IN DESIRED POSITION. LOCKSCREW AND LOCKNUT ON SHAFT IS THEN TIGHTENED TO POSITIVELY LOCK LEVER IN POSITION.
LEVER ADJUSTMENT DETAIL SCALE 2 TO 1

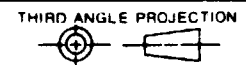


(8) NO. 18 WIRE LEAD PER MIL-W-22759/7 MARKED WITH CIRCUIT IDENTIFICATION AND WIRE GAGE (1-18, 2-18, ETC) PER MIL-W-5088

NOTES

- CORROSION RESISTANT STEEL ENCLOSURE
- SWITCH SEALED PER MIL-S-8805 SYMBOL 4
- LEADS PARALLEL WITH CENTERLINE OF MOUNTING PINS WITHIN 10°
- UNIT PROVIDES NO SHAFT RESTORING TORQUE. THE ACTUATING DEVICE MUST CONTROL MOVEMENT OF THE SHAFT
- DO NOT APPLY MORE THAN 20-25 INCH-POUNDS OF TORQUE WHEN TIGHTENING LOCKING NUT
- CIRCUIT DIAGRAM, CATALOG LISTING AND MIL STD NO. MS24420-4 ARE SHOWN ON NAMEPLATE
- APPLICATION INFORMATION ONLY
- HARDWARE MAY BE PACKAGED UNASSEMBLED PER MIL-S-8805

THIS DRAWING COVERS A PROPRIETARY ITEM AND IS THE PROPERTY OF MICRO SWITCH, A DIVISION OF HONEYWELL. THIS DRAWING IS NOT TO BE COPIED OR USED WITHOUT THE APPROVAL OF MICRO SWITCH.



SCALE FULL

DO NOT SCALE PRINT

TOLERANCES APPLY TO DESIGN UNITS. CONVERSIONS ARE ONLY FOR REFERENCE. UNLESS NOTED, TOLERANCES ARE ±

| DIM. | TOL. | DIM. | TOL. |
|--------------|------|------|------|
| NO PLACES | ± | IN | ± |
| ONE PLACE | ± | MM | ± |
| TWO PLACES | ± | MM | ± |
| THREE PLACES | ± | MM | ± |
| ANGLES | ± | DEG | ± |

DESIGN UNITS: SI METRIC, US CUSTOMARY

RAW MATERIAL-COMMERCIAL STANDARD MICRO SWITCH STANDARDS APPLY. DIMENSIONS ARE TO BE MET BEFORE PROTECTIVE COATINGS ARE APPLIED.

WEIGHT 1.10 LB

CHARACTERISTICS

| | |
|---------------------|--------------|
| OPERATING TORQUE | 10 IN-LB MAX |
| PRETRAVEL | SEE DETAIL |
| DIFFERENTIAL TRAVEL | |
| OVERTRAVEL | |
| FREE POSITION | |

ELECTRICAL DATA

| | | |
|---|-----------|------------|
| CONTACT ARRANGEMENT (SEE CIRCUIT DIAGRAM) | | |
| 28 VDC | | |
| LOAD | SEA LEVEL | 50,000 FT. |
| RES | 15 | 15 |
| IND | 10 | 10 |
| MOTOR | 5 | 5 |
| LAMP | 3.0 | 3.0 |