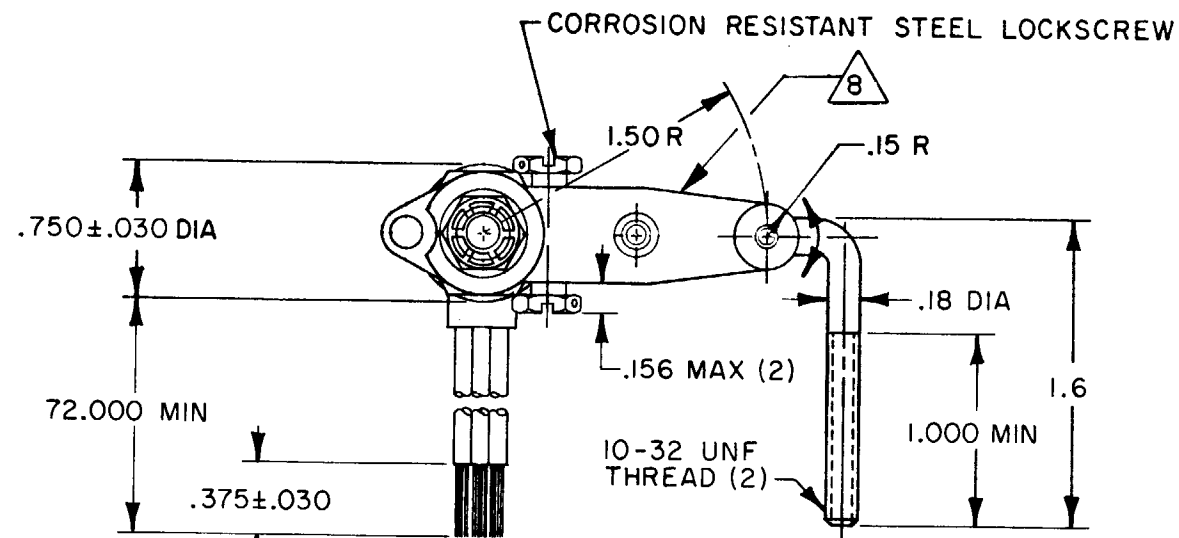


MICRO SWITCH
 FREEPORT ILLINOIS U S A
 A DIVISION OF HONEYWELL
 FED. MFG. CODE 91929

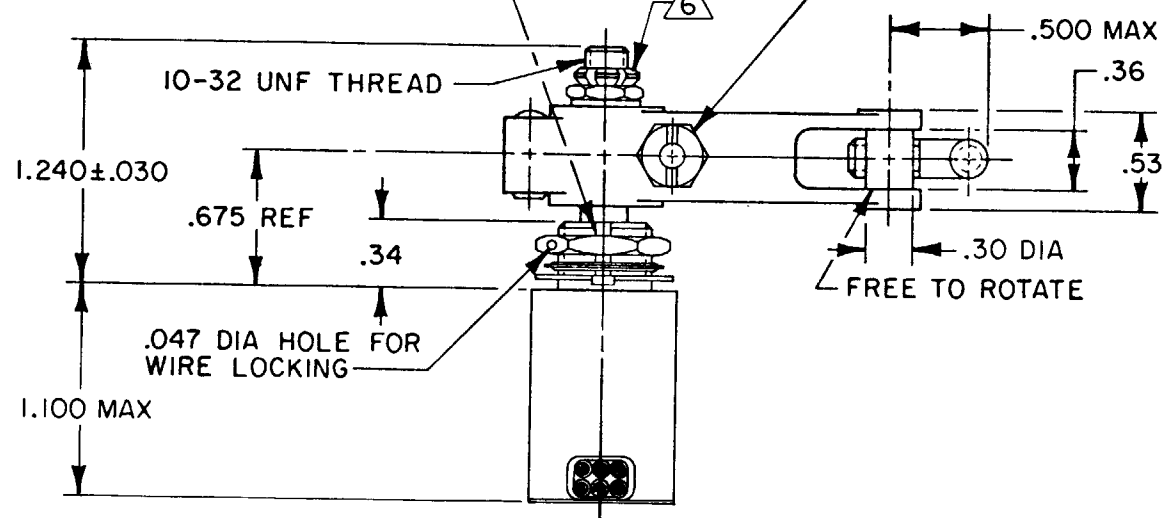
SWITCH - ENCLOSED

CATALOG LISTING
442EN19-6



1/4-32 UNEF-2A CORROSION RESISTANT STEEL LOCKING SCREW .312 REF ACROSS FLATS (2)

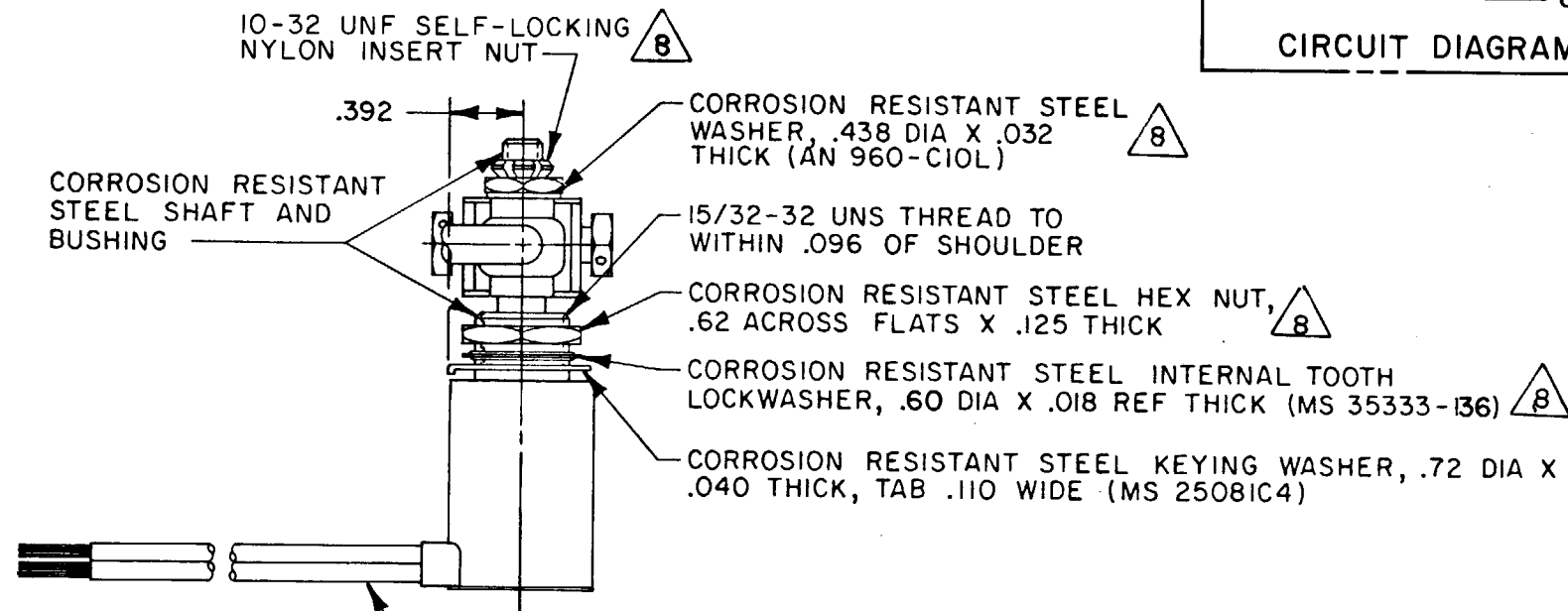
.076 WIDE X .040 REF DEEP KEYWAY



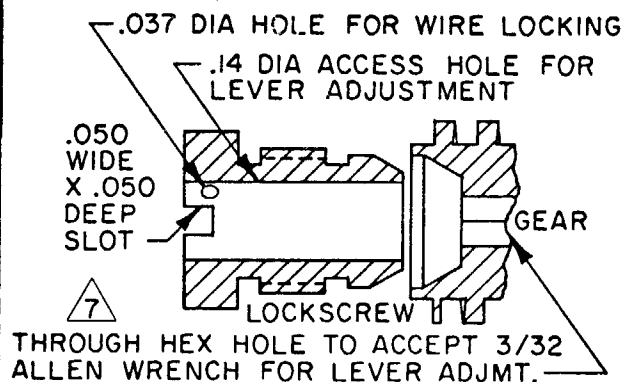
.047 DIA HOLE FOR WIRE LOCKING

10-32 UNF SELF-LOCKING NYLON INSERT NUT

CORROSION RESISTANT STEEL SHAFT AND BUSHING



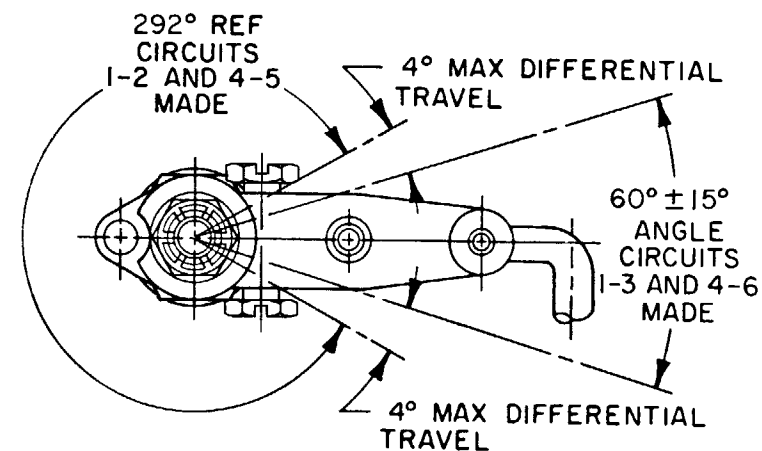
NO. 20 WIRE LEAD PER MIL-W-22759/5 MARKED WITH CIRCUIT IDENTIFICATION AND WIRE GAGE (1-20, 2-20, ETC) PER MIL-W-5088 (6)



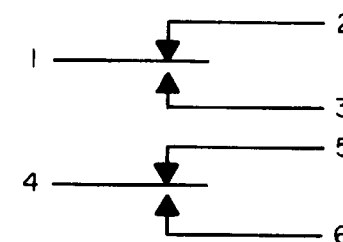
THROUGH HEX HOLE TO ACCEPT 3/32 ALLEN WRENCH FOR LEVER ADJMT.

LEVER MAY BE ADJUSTED FOR AN INFINITE NUMBER OF POSITIONS THRU 360° ADJUSTMENT IS MADE BY LOOSENING THE LOCK NUT AND THEN THE LOCKSCREW AND TURNING GEAR UNTIL LEVER IS IN DESIRED POSITION. LOCKSCREW AND LOCK NUT ON SHAFT IS THEN TIGHTENED TO POSITIVELY LOCK LEVER IN POSITION.

LEVER ADJUSTMENT DETAIL
 SCALE 2 TO 1



CHARACTERISTICS



CIRCUIT DIAGRAM

442EN19-6

M

DRAWING NUMBER

18

192021

ISSUE

REVISIONS

A	C044351	CEB	25 FEB 80
B	C047573	TSM	11 AUG 80
C	49806	CO	28 SEP 81
D	C053720	GRT	
E	C057370	CJH	25 AUG 83
		JAP	14 MAY 85

REPLACES

RELEASE NO. SR-12110

CHECK

CHECK

CHECK

CHECK

CHECK

CHECK

CHECK

CHECK

CHECK

CHECK

CHECK

CHECK

CHECK

CHECK

CHECK

CHECK

CHECK

CHECK

CHECK

CHECK

CHECK

CHECK

CHECK

CHECK

CHECK

CHECK

THIS DRAWING COVERS A PROPRIETARY ITEM AND IS THE PROPERTY OF MICRO SWITCH, A DIVISION OF HONEYWELL. THIS DRAWING IS NOT TO BE COPIED OR USED WITHOUT THE APPROVAL OF MICRO SWITCH.

THIRD ANGLE PROJECTION

SCALE FULL

DO NOT SCALE PRINT

TOLERANCES
 APPLY TO DESIGN UNITS. CONVERSIONS ARE ONLY FOR REFERENCE. UNLESS NOTED, TOLERANCES ARE 2

NO. PLACES	DIM.	TOL.	DIM.	TOL.
	mm	mm/in	in	mm/in
ONE PLACE	X	1/64	X	0.01/03
TWO PLACES	X,XX	0.001/016	X,XX	0.001/015
THREE PLACES	X,XXX	0.0001/006	X,XXX	0.0001/005

DESIGN UNITS SI METRIC US CUSTOMARY

RAW MATERIAL-COMMERCIAL STANDARD MICRO SWITCH STANDARDS APPLY. DIMENSIONS ARE TO BE MET BEFORE PROTECTIVE COATINGS ARE APPLIED.

WEIGHT 8.3 OZ MAX

CHARACTERISTICS

OPERATING TORQUE-----3 IN LB MAX

PRETRAVEL
 DIFFERENTIAL TRAVEL
 OVERTRAVEL
 FREE POSITION

SEE DETAIL

ELECTRICAL DATA

CONTACT ARRANGEMENT
 S P D T (2)

LOAD	28 VDC	
	SEA LEVEL	50,000 FT.
RES	7	7
IND	4	2.5
MOTOR	4	
LAMP		

NOTES

- 1 - ALL EXPOSED PARTS ARE CORROSION RESISTANT
- 2 - SWITCH SEALED PER MIL-S-8805 SYMBOL 4
- 3 - MICRO IDENTIFICATION, CIRCUIT DIAGRAM, AND CAT. LIST. PERMANENTLY MARKED ON SIDE OF SWITCH
- 4 - UNIT PROVIDES NO SHAFT RESTORING TORQUE, THE ACTUATING DEVICE MUST CONTROL MOVEMENT OF THE SHAFT
- 5 - CIRCUIT DIAGRAM SHOWN WITH SWITCH IN OPERATED POSITION
- 6 - DO NOT APPLY MORE THAN 20-25 INCH-POUNDS OF TORQUE WHEN TIGHTENING LOCKING NUT
- 7 - WORM GEAR TO TURN WITH 6 IN-LB MAX TORQUE WITH SCREWS LOCKED OUT TIGHT
- 8 - HARDWARE MAY BE PACKAGED UNASSEMBLED PER MIL-S-8805