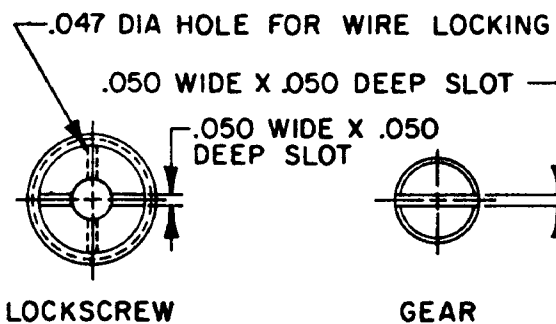
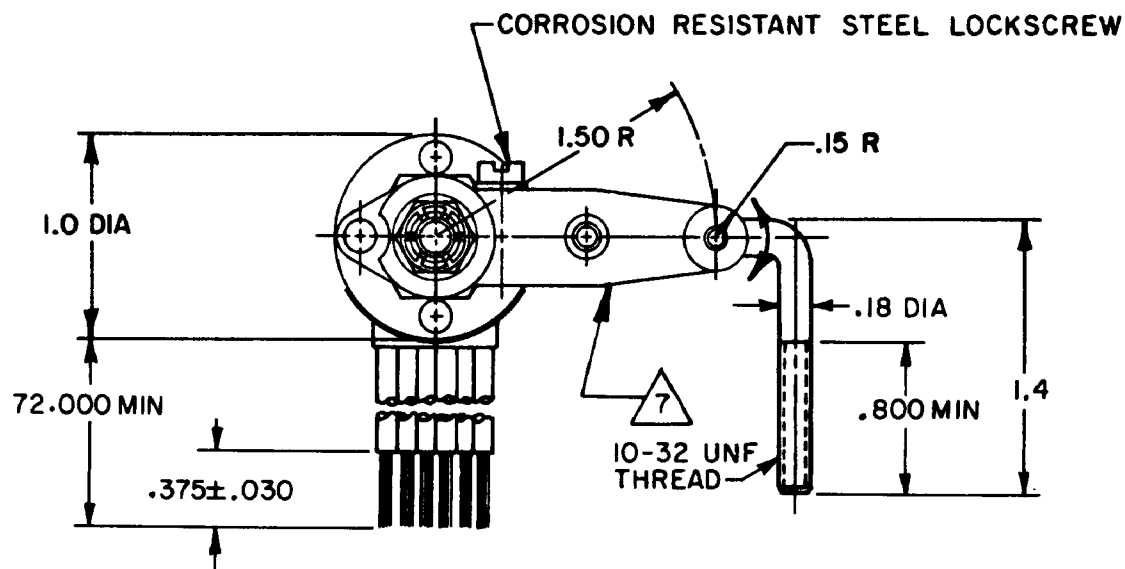


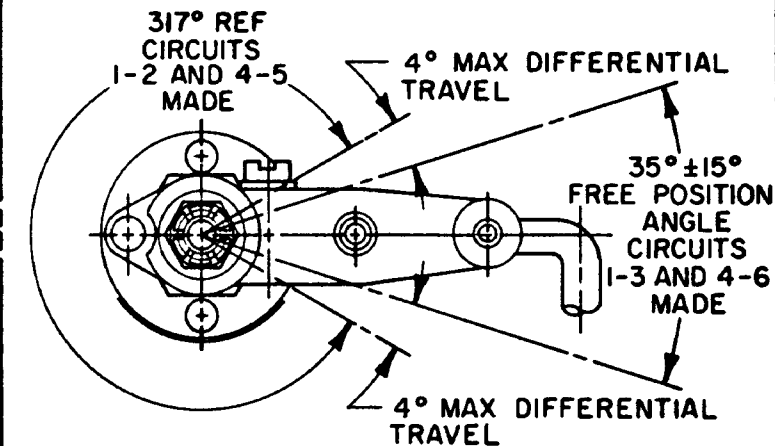
MICRO SWITCH
 FREEPORT ILLINOIS U.S.A.
 A DIVISION OF HONEYWELL
 FED MFG CODE 91829

SWITCH - ENCLOSED

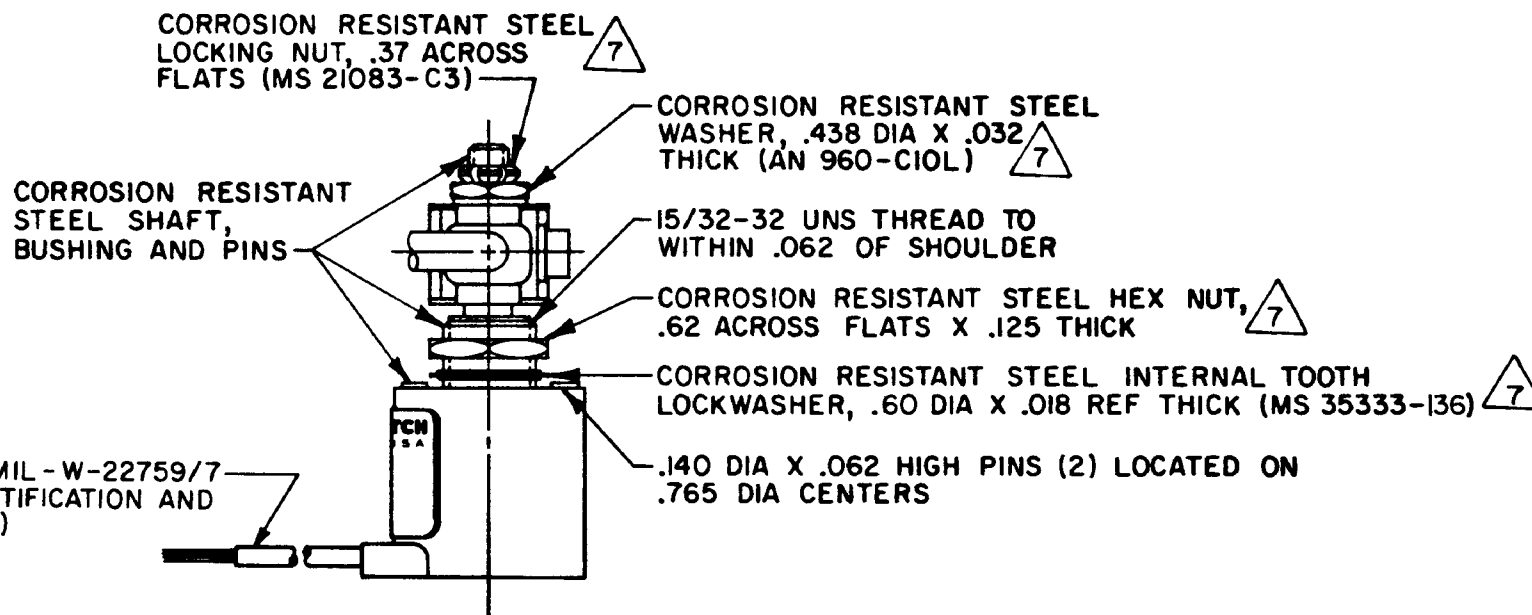
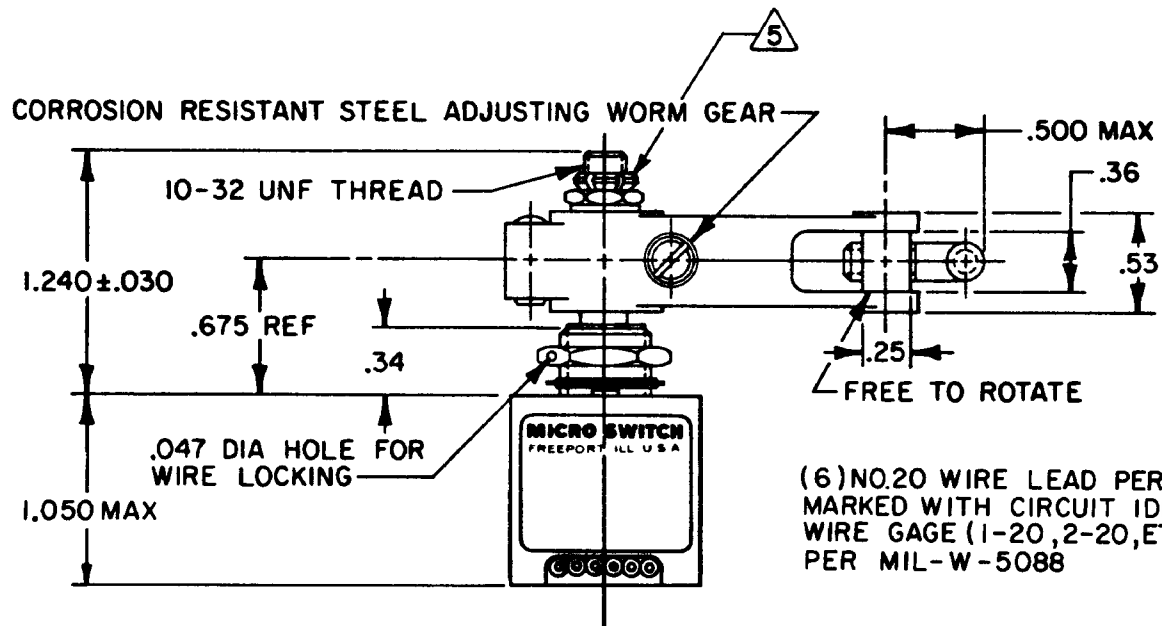
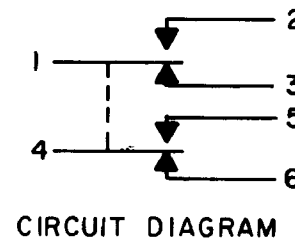
CATALOG LISTING
41EN45-6



LEVER MAY BE ADJUSTED FOR AN INFINITE NUMBER OF POSITIONS THRU 360°. ADJUSTMENT IS MADE BY LOOSENING THE LOCK NUT AND THEN THE LOCKSCREW AND TURNING GEAR UNTIL LEVER IS IN DESIRED POSITION. LOCKSCREW AND LOCK NUT ON SHAFT IS THEN TIGHTENED TO POSITIVELY LOCK LEVER IN POSITION.



CHARACTERISTICS



DRAWING NUMBER: 41EN45-6
 ISSUE: 6
 REVISIONS:
 A CO 44351 29 NOV 79
 B CO 47873 11 AUG 80
 C CO 49806 28 SEPT 81
 D CO 75787-C 11 MAY 84
 CHECK: C, E, B, 31 NOV 79
 DRAWN: S, L, B, 29 NOV 79
 REPLACES: PR-5665
 FO-52851-A

THIS DRAWING COVERS A PROPRIETARY ITEM AND IS THE PROPERTY OF MICRO SWITCH, A DIVISION OF HONEYWELL. THIS DRAWING IS NOT TO BE COPIED OR USED WITHOUT THE APPROVAL OF MICRO SWITCH.

THIRD ANGLE PROJECTION

SCALE FULL	
DO NOT SCALE PRINT	
TOLERANCES	
APPLY TO DESIGN UNITS. CONVERSIONS ARE ONLY FOR REFERENCE UNLESS NOTED. TOLERANCES ARE ±	
DIM.	TOL.
mm	mm/in
NO PLACES	17/94
ONE PLACE	0.4/018
TWO PLACES	0.15/008
THREE PLACES	0.01/005
ANGLES	
DESIGN UNITS	<input type="checkbox"/> METRIC <input checked="" type="checkbox"/> US CUSTOMARY
RAW MATERIAL-COMMERCIAL STANDARD MICRO SWITCH STANDARDS APPLY	
DIMENSIONS ARE TO BE MET BEFORE PROTECTIVE COATINGS ARE APPLIED	
WEIGHT	8.6 OZ MAX

CHARACTERISTICS	ELECTRICAL DATA
OPERATING TORQUE — — — 3 IN LB MAX	CONTACT ARRANGEMENT S P D T (2)
PRETRAVEL	28 VDC
DIFFERENTIAL TRAVEL	LOAD
OVERTRAVEL	SEA LEVEL
FREE POSITION	50,000 FT.
SEE DETAIL	RES 4
	IND 3
	MOTOR 4
	LAMP 2.4

- NOTES**
- 1 - CORROSION RESISTANT STEEL ENCLOSURE
 - 2 - SWITCH SEALED PER MIL-S-8805 SYMBOL 4
 - 3 - CIRCUIT DIAGRAM AND CAT. LIST. ARE SHOWN ON NAMEPLATE
 - 4 - UNIT PROVIDES NO SHAFT RESTORING FORCE THE ACTUATING DEVICE MUST CONTROL MOVEMENT OF THE SHAFT
 - 5 - DO NOT APPLY MORE THAN 20-25 INCH-POUNDS OF TORQUE WHEN TIGHTENING LOCKING NUT
 - 6 - LEADS PARALLEL WITH CENTERLINE OF MOUNTING PINS WITHIN 5°
- 7 - HARDWARE MAY BE PACKAGED UNASSEMBLED PER MIL-S-8805