

# MICRO SWITCH

A DIVISION OF MINNEAPOLIS-HONEYWELL REGULATOR COMPANY  
 FREEPORT, ILLINOIS  
 FED. MFR. CODE 91929

# SWITCH—BASIC

CATALOG LISTING

## ISE3-12

(M) ISE3-12  
 ISSUE 5

ISE3-12

PAGE 1 OF 1

M

DRAWING NUMBER

ISSUE 8 X  
 8 10

REPLACES

RELEASE NO.

CHECK

REVISIONS

A	CO16449	R G C	2 MARCH 62
B	CO-34213	J A L	24 SEPT 74
C	CO 51463-G	WJM	27 JUL 83
D	CO57041A	C J H	MAR 85
E	CO94274	D L M	MAR 99

CHECK

CHECK

CHECK

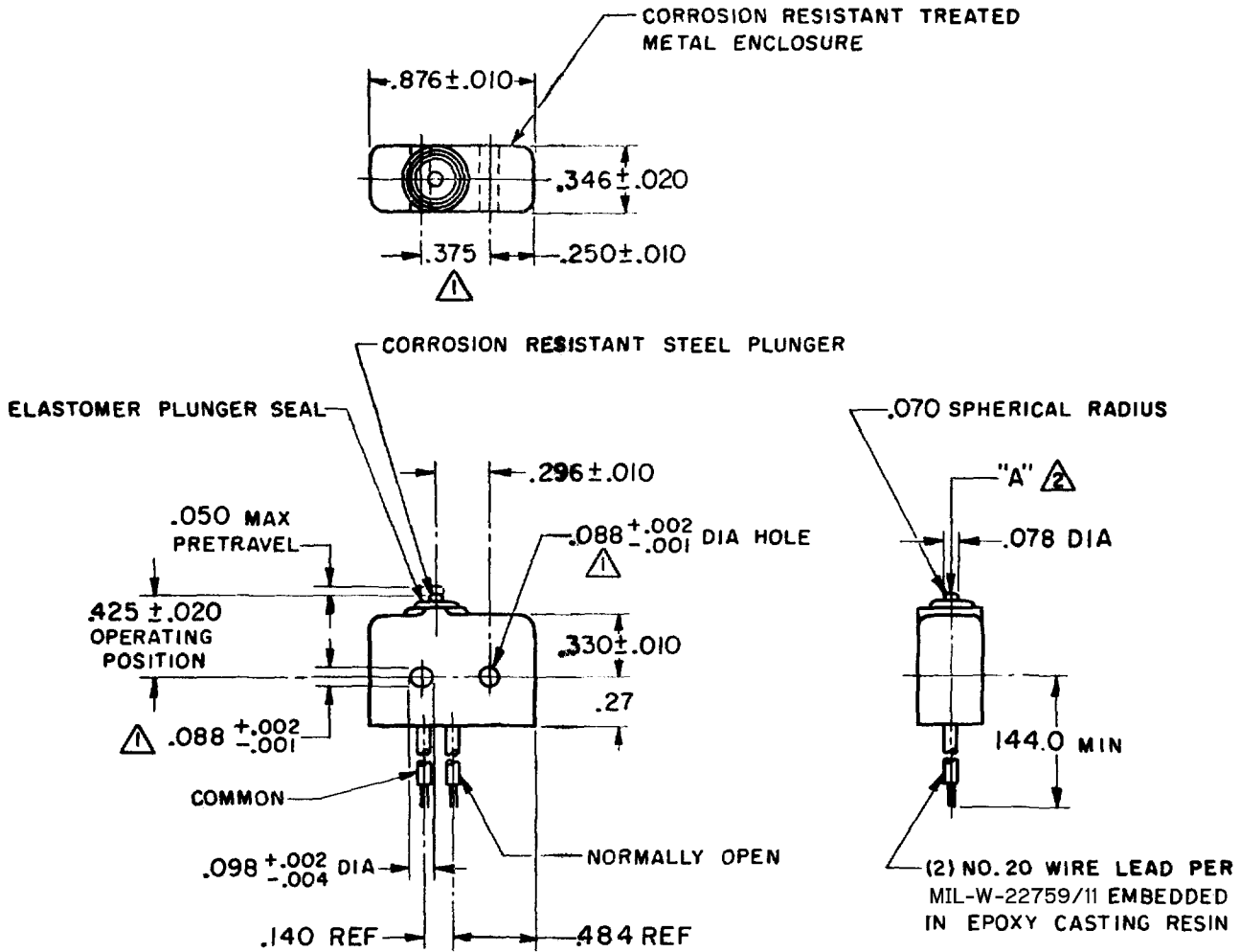
CHECK

CHECK

CHECK

CHECK

CHECK



NOTE -

- ⚠ - MOUNTING HOLES WILL ACCEPT  $.087$  MAX DIA PINS OR SCREWS ON  $.375 \pm .002$  CENTERS
- ⚠ - ACTUATION IN LINE WITH ARROW "A" IS RECOMMENDED
- ⚠ - WEIGHT OF SWITCH ONLY IS  $.26$  OZ MAX. WEIGHT OF SWITCH WITH WIRE LEADS IS  $3.20$  OZ MAX

THIS DRAWING COVERS A PROPRIETARY ITEM AND IS THE PROPERTY OF MICRO SWITCH, A DIVISION OF MINNEAPOLIS-HONEYWELL REGULATOR CO. THIS DRAWING IS NOT TO BE COPIED OR USED WITHOUT THE APPROVAL OF MICRO SWITCH.

CHARACTERISTICS

OPERATING FORCE	5 - 17 OZ
RELEASE FORCE	4 OZ MIN
RELEASE TRAVEL	.004 MIN
DIFFERENTIAL TRAVEL	.004 MAX
OVERTRAVEL	.003 MIN.

ELECTRICAL DATA

CONTACT ARRANGEMENT	
S P N O	
250 VAC	5 AMP
30 VOLTS DC RATING	
INDUCTIVE	SEA LEVEL - 3 AMP
	50,000 FT - 2.5 AMP
RESISTIVE	SEA LEVEL - 5 AMP
	50,000 FT - 5 AMP
MAXIMUM INRUSH	24 AMP

SCALE FULL

DO NOT SCALE PRINT

UNLESS OTHERWISE SPECIFIED  
 DIMENSIONS ARE IN INCHES

**TOLERANCES ARE:**

ONE PLACE (.0)	$\pm .030$
TWO PLACE (.00)	$\pm .018$
THREE PLACE (.000)	$\pm .008$
ANGLES	$\pm$

WEIGHT ⚠

FORMTEK

0-50378

DRAWN

R G C 2 MARCH 1962 CHECK