

## FEATURES AND SPECIFICATIONS

### Features and Benefits

- Sizes 2 to 9 circuits
- Open back wall provides locking and lower insertion force

### Reference Information

Packaging: Bag  
 UL File No.: E29179  
 Mates With: 5195-N and 5239-N  
 Designed In: Millimeters

### Electrical

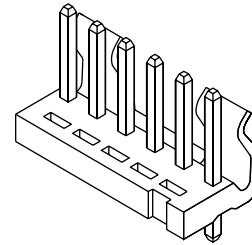
Voltage: 250V  
 Current: 7.0A  
 Contact Resistance: 10mΩ max.  
 Dielectric Withstanding Voltage: 1500V AC/1 min.  
 Insulation Resistance: 1000 MΩ min.

### Physical

Housing: Glass-filled PBTP, UL 94V-0  
 Contact: Brass  
 Plating: Tin  
 Operating Temperature: -40 to +105°C

**molex**® **3.96mm (.156") Pitch**  
**SPOX™**  
**Header**

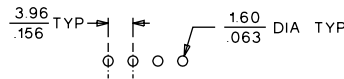
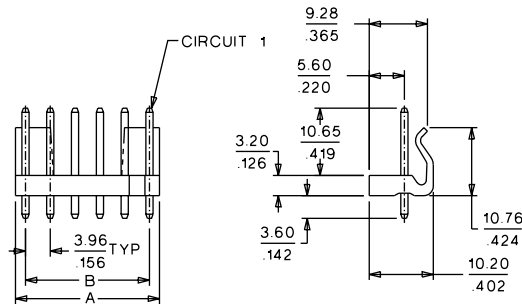
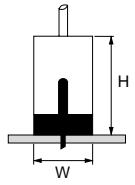
**53405**  
**Vertical**  
**Friction Lock**



D  
3.00 to 7.92mm (.118 to .312") Pitch

#### Mating Dimensions

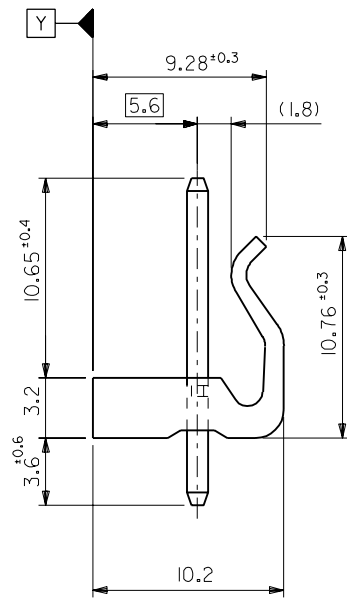
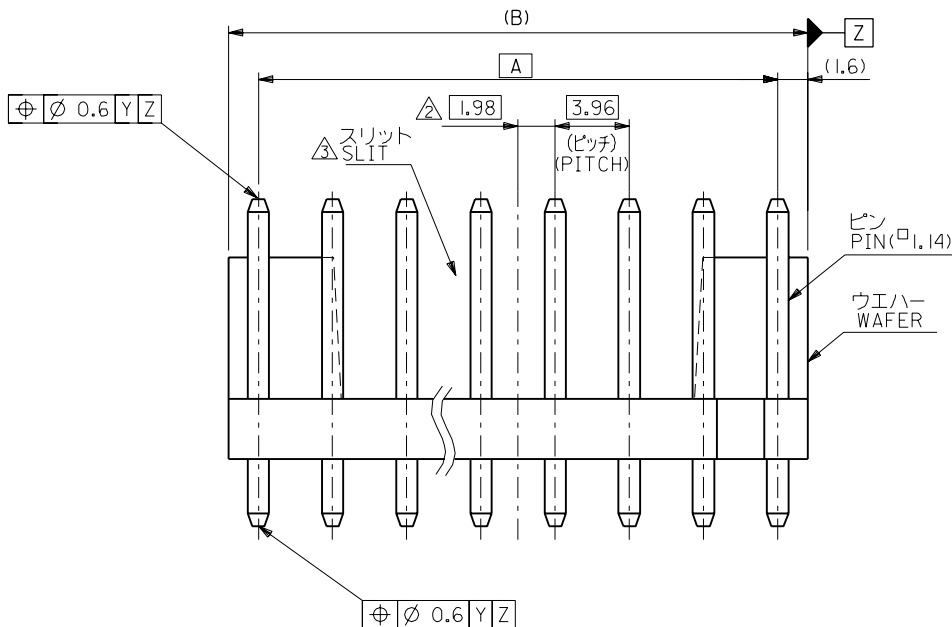
1.53405/5195-N/5194 or 5225  
 H=19.20mm (.756") W=11.80mm (.465")  
 2.53405/5239-N/2478 or 5167 or 2578 or 5168



PCB LAYOUT: COMPONENT SIDE  
 RECOMMENDED PCB THICKNESS: 1.60 / .063

## ORDERING INFORMATION AND DIMENSIONS

Circuits	Order No.	Dimension	
		A	B
2	53405-0210	7.16 (.282)	3.96 (.156)
3	53405-0310	11.12 (.438)	7.92 (.312)
4	53405-0410	15.08 (.594)	11.88 (.468)
5	53405-0510	19.04 (.750)	15.84 (.624)
6	53405-0610	23.00 (.906)	19.80 (.780)
7	53405-0710	26.96 (1.061)	23.76 (.935)
8	53405-0810	30.92 (1.217)	27.72 (1.091)
9	53405-0910	34.88 (1.373)	31.68 (1.247)



34.88	31.68	53405-0910	9
30.92	27.72	-0810	8
26.96	23.76	-0710	7
23	19.8	-0610	6
19.04	15.84	-0510	5
15.08	11.88	-0410	4
11.12	7.92	-0310	3
7.16	3.96	53405-0210	2
B	A	ENG. NO.	極数 CKT.

注記  
NOTES:

1. 嵌合相手 (MATES): 5195-N (5194T, TL)
- △ 全極数が偶数の場合に適用。  
APPLY EVEN CIRCUIT PRODUCTS.
- △ 2、3極はロック部スリットなし。  
NO SLIT IS PROVIDED FOR 2 AND 3CKTS.

角度 ANGLE	±3°	記号 LTR	変更内容 REVISION RECORD	DR. CHK.	日付 DATE
30以上 OVER	+0.3	B	変更 REVISED (JC60117)	K.H. S.K.	93/8/25
10以上 30未満 OVER UNDER	+0.25	A	変更 REVISED (J30218)	K.T. H.H.	93/3/11
10未満 UNDER	+0.2	O	新規作成 RELEASED (J30081)	K.T. H.H.	93/1/28

材料 MATERIAL	ピン: 黄銅 銅下地鍍メッキ PIN: BRASS, TIN OVER COPPER PLATING.
仕上げ FINISH	—
適用電線範囲 WIRE RANGE	—
被覆外径 INS. RANGE	—
DRAWN BY	93/1/28 K.TOJO
CHK'D BY	95/8/25 S.KUNISHI
APP'D BY	95/8/25 M.FUKUSHIMA
尺度 SCALE	4 : 1

MOLEX-JAPAN CO.,LTD. 日本モレックス株式会社	
REVISE ONLY ON CAD SYSTEM	
TITLE 名称	
KK 3.96 WAFER ASS'Y WITH LOCK	
DWG. NO.	REV
SD-53405-***10	B