



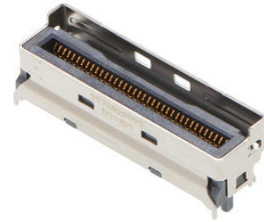
**Part Number :** [2170822022](#)

**Product Description :** Mini Cool Edge (MCIO)  
Connector, Vertical, 8x PCIe Gen5, 74 Circuits, 0.75µm  
Gold (Au) Plated Contact, 2.20mm Solder Peg Length,  
1.27µm Nickel Plated Shell, with Pick and Place Cap

**Series Number :** 217082

**Status :** Active

**Product Category :** High-Speed I/O Connectors



---

## Documents & Resources

### Drawings

[2170822022 sd.pdf](#)

### Specifications

[2170820001-000.pdf](#)

---

## Product Environment Compliance

### Compliance

GADSL/IMDS	Not Relevant
China RoHS	per SJ/T 11365-2006
EU ELV	Not Relevant
Low-Halogen Status	Low-Halogen per IEC 61249-2-21
REACH SVHC	Not Contained per D(2025)4165-DC (25 June 2025)
EU RoHS	Compliant per EU 2015/863

### Compliance Statements

- EU RoHS
- REACH SVHC
- Low-Halogen

### Industry Documents

- IPC 1752A Class C
- IPC 1752A Class D
- Molex Product Compliance Declaration
- IEC-62474

- chemSHERPA (xml)

Substances of Interest

- PFAS

EU RoHS Certificate of Compliance

Additional Product Compliance Information

---

## Part Details

### General

Status	Active
Category	High-Speed I/O Connectors
Series	217082
Description	Mini Cool Edge (MCIO) Connector, Vertical, 8x PCIe Gen5, 74 Circuits, 0.75µm Gold (Au) Plated Contact, 2.20mm Solder Peg Length, 1.27µm Nickel Plated Shell, with Pick and Place Cap
Application	Wire-to-Board
Component Type	Receptacle
Product Name	Mini Cool Edge (MCIO)
Type	Internal
UPC	195842049260

### Electrical

Current - Maximum per Contact	1.1A
Data Rate	32.0 Gbps
Voltage - Maximum	30V AC (RMS)/DC

### Physical

Circuits (Loaded)	74
Circuits (maximum)	74
Color - Resin	Black
Durability (mating cycles max)	200
Gender	Receptacle
Lock to Mating Part	Yes
Material - Metal	Copper Alloy

Material - Plating Mating	Gold
Material - Plating Termination	Matte Tin
Material - Resin	High Temperature Thermoplastic
Net Weight	2.960/g
Number of Rows	2
Orientation	Vertical
Packaging Type	Embossed Tape on Reel
Panel Mount	No
PCB Locator	Yes
PCB Retention	Yes
Pitch - Mating Interface	0.60mm
Pitch - Termination Interface	0.60mm
Plating min - Mating	0.750µm
Plating min - Termination	2.540µm
Polarized to Mating Part	Yes
Polarized to PCB	Yes
Ports	1
Temperature Range - Operating	-40° to +85°C
Termination Interface Style	Surface Mount

---

## Mates With / Use With

### Mates with Part(s)

Description	Part Number
Mini Cool Edge (MCIO) Straight-to-Mini Cool Edge (MCIO) 8x Straight Cable Assemblies	<a href="#"><u>215071</u></a>
Mini Cool Edge (MCIO) 8x Cable Assemblies	<a href="#"><u>215073</u></a>
Mini Cool Edge (MCIO) Left-Exit-to-Mini Cool Edge (MCIO) 8x Right-Exit Cable Assemblies	<a href="#"><u>215732</u></a>