

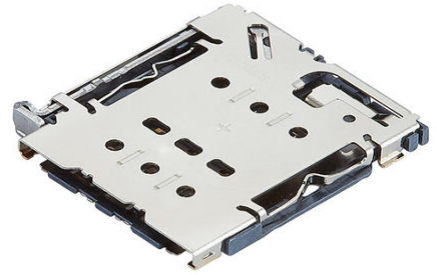
Part Number : [2128460114](#)

Product Description : nano-SIM Card Socket, Pin-Eject Tray Type, 1.40mm Height, Vertical

Series Number : 212846

Status : Obsolete

Product Category : Memory / SIM Card Connectors



Documents & Resources

Specifications

[2128460114-500.pdf](#)

[2128460114-001.pdf](#)

Product Environment Compliance

Compliance

GADSL/IMDS	Not Relevant
China RoHS	Product not active
EU ELV	Product not active
Low-Halogen Status	Product not active
REACH SVHC	Not Contained per D(2025)4165-DC (25 June 2025)
EU RoHS	Compliant per EU 2015/863

Compliance Statements

- EU RoHS
- REACH SVHC
- Low-Halogen

Industry Documents

- IPC 1752A Class C
- IPC 1752A Class D
- Molex Product Compliance Declaration
- IEC-62474
- chemSHERPA (xml)

Substances of Interest

- PFAS

Part Details

General

Status	Obsolete
Category	Memory / SIM Card Connectors
Series	212846
Description	nano-SIM Card Socket, Pin-Eject Tray Type, 1.40mm Height, Vertical
Comments	Tray is customer sourced.
Product Name	nano-SIM
Style	Pin-Eject
UPC	193264228140

Electrical

Current - Maximum per Contact	0.5A
Voltage - Maximum	10V AC (RMS)/DC

Physical

Card Detection Switch	Open
Card Entry Location	Front
Circuits (Loaded)	6
Circuits (maximum)	6
Color - Resin	Black
Durability (mating cycles max)	2000 Pin-Eject, 5000 Tray Handle
Ejector Button Side	Left
Material - Contact	Copper Alloy
Material - Plating Mating	Gold over Palladium Nickel
Material - Plating Termination	Gold
Material - Resin	Liquid Crystal Polymer
Material - Shell	Stainless Steel
Net Weight	0.445/g
Packaging Type	Embossed Tape on Reel
PCB Retention	None

Pitch - Mating Interface	1.10mm
Temperature Range - Operating	-40° to +85°C
Termination Interface Style	Surface Mount

Mates With / Use With

Use with Part(s)

Description	Part Number
Use With	nano-SIM Card

This document was generated on Oct 02, 2025

Obsolete