



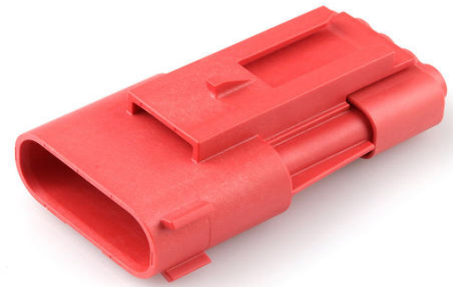
Part Number : [2077781113](#)

Product Description : Squba 3.6 Sealed Plug Assembly, 3.60mm Pitch, 3 Circuits, Single Row, Glow-Wire Capable, with Clipslot, Key A, Red, UL1015/UL1230 Compatible

Series Number : 207778

Status : Active

Product Category : Connector Housings



Documents & Resources

Drawings

[2077781113 sd.pdf](#)

[2077780000-PK-000.pdf](#)

3D Models and Design Files

[STEP AP242](#)

[SOLIDWORKS](#)

[Creo](#)

Specifications


[2077760000-AS-000.pdf](#)

[2077760000-PS-000.pdf](#)

[2077760000-TS-000.pdf](#)

Product Environment Compliance

Compliance

GADSL/IMDS	Not Relevant
China RoHS	 per SJ/T 11365-2006
EU ELV	Not Relevant
Low-Halogen Status	Not Low-Halogen per IEC 61249-2-21
REACH SVHC	Not Contained per D(2025)4165-DC (25 June 2025)
EU RoHS	Compliant per EU 2015/863

Compliance Statements

- EU RoHS
- REACH SVHC
- Low-Halogen

Industry Documents

- IPC 1752A Class C
- IPC 1752A Class D
- Molex Product Compliance Declaration
- IEC-62474
- chemSHERPA (xml)

Substances of Interest

- PFAS

EU RoHS Certificate of Compliance

Additional Product Compliance Information

Part Details

General

Status	Active
Category	Connector Housings
Series	207778
Description	Squba 3.6 Sealed Plug Assembly, 3.60mm Pitch, 3 Circuits, Single Row, Glow-Wire Capable, with Clipslot, Key A, Red, UL1015/ UL1230 Compatible
Application	Power, Signal, Wire-to-Wire
Product Name	Squba
UPC	196823171758

Agency

UL	E29179
----	--------

Physical

Circuits (maximum)	3
Color - Resin	Red
Flammability	94V-0
Gender	Plug

Glow-Wire Capable	Yes
Keying to Mating Part	None
Lock to Mating Part	Yes
Material - Resin	Nylon
Net Weight	5.232/g
Number of Rows	1
Packaging Type	Bag
Panel Mount	Yes
Pitch - Mating Interface	3.60mm
Pitch - Termination Interface	3.60mm
Polarized to Mating Part	Yes
Temperature Range - Operating	-40° to +105°C

Mates With / Use With

Mates with Part(s)

Description	Part Number
Squba 3.6 Sealed Receptacle Assembly, 3.60mm Pitch, 3 Circuits, Single Row, Glow-Wire Capable, Key A, Red, UL1015/UL1230 Compatible	<u>2077820113</u>

Use with Part(s)

Description	Part Number
Squba 3.6 Plug Terminal, Matte Tin Plating, UL1015/UL1230 Compatible, 20-18 AWG, Reel	<u>2077760003</u>
Squba Weather Cap for 6 or 3 Circuit Plug Housing	<u>2204230006</u>