



Part Number : [1731070507](#)

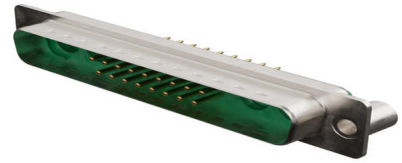
Product Description : FCT Mixed Layout D-Sub Connector, Male, Straight, PCB Through Hole, Gold Plating, Tin-plated Shell with Dimples, 6.50mm Rear Through Hole Spacer, 21 Circuits Max, 17 Signal Contacts Loaded, Green Insulator

Series Number : 173107

Status : Active

Product Category : D-Sub Connectors

Engineering Number : FM21WA4P1-1480



Documents & Resources

Drawings

[1731070507_sd.pdf](#)

[STEP AP242](#)

[SOLIDWORKS](#)

[Creo](#)

Product Environment Compliance

Compliance

GADSL/IMDS	Not Relevant
China RoHS	per SJ/T 11365-2006
EU ELV	Not Relevant
Low-Halogen Status	Not Reviewed per IEC 61249-2-21
REACH SVHC	Not Reviewed per D(2025)4165-DC (25 June 2025)
EU RoHS	Compliant with Exemption 6(c) per EU 2015/863

Compliance Statements

- EU RoHS
- REACH SVHC
- Low-Halogen

Industry Documents

- IPC 1752A Class C
- IPC 1752A Class D
- Molex Product Compliance Declaration
- IEC-62474
- chemSHERPA (xml)

Substances of Interest

- PFAS

EU RoHS Certificate of Compliance

Additional Product Compliance Information

Part Details

General

Status	Active
Category	D-Sub Connectors
Series	173107
Description	FCT Mixed Layout D-Sub Connector, Male, Straight, PCB Through Hole, Gold Plating, Tin-plated Shell with Dimples, 6.50mm Rear Through Hole Spacer, 21 Circuits Max, 17 Signal Contacts Loaded, Green Insulator
IP Rating	IP20
Magnetic	Yes
Product Name	FCT Products
Type	Mixed Layout
UPC	191128349642

Electrical

Current - Maximum per Contact	7.5A
Shielded	Yes

Physical

Circuits (Loaded)	17
Circuits (maximum)	21
Color - Resin	Green

Durability (mating cycles min)	500
Gender	Male
Material - Contact	Copper Alloy
Material - Resin	PBT
Material - Shell	Steel
Net Weight	13.700/g
Number of Rows	2
Orientation	Straight
Packaging Type	Carton
Panel Mount	Rear
Panel Mount Method	Thread-In
PCB Retention	Yes
PC Tail Length	10.30mm
Plating - Contact	Gold over Nickel
Plating min - Mating	0.800µm
Plating - Shell	Tin
Polarized to Mating Part	Yes
Polarized to PCB	Yes
Ports	1
Temperature Range - Operating	-55° to +130°C
Termination Style	Through Hole
Waterproof / Dustproof	No
Waterproof / Dustproof Type	IP20

Mates With / Use With

Mates with Part(s)

Description	Part Number
Mates With	FCT Mixed Layout D-Sub, Size 4, 21WA4, Socket

Use with Part(s)

Description	Part Number
Use With	FCT Coaxial, High Power, High Voltage, or Pneumatic Contacts

