

PLEASE CHECK WWW.MOLEX.COM FOR LATEST PART INFORMATION

Part Number: [5600200320](#)
Status: **Active**
Overview: [DuraClik Connector System](#)
Description: DuraClik Wire-to-Board Header, Single Row, Vertical, 3 Circuits, Tin (Sn) Over Nickel, Natural

Documents:

[3D Model](#) [Product Specification PS-502351-001-001 \(PDF\)](#)
[Drawing \(PDF\)](#) [Packaging Specification PK-560020-002-JP-001 \(PDF\)](#)
[3D Model \(PDF\)](#) [RoHS Certificate of Compliance \(PDF\)](#)

Agency Certification

UL E29179

General

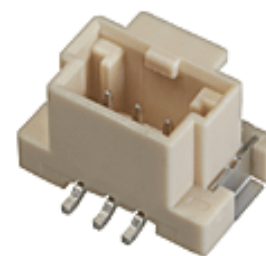
Product Family PCB Headers
 Series [560020](#)
 3D Viewer Yes
 Application Automotive, Signal, Wire-to-Board
 CURRENT-MAX-NUMERIC 3.0
 Comments The Operating Temperature Range when used with DuraClik series 502351 is -40°C to +105°C. It is -40°C to 125°C when used with DuraClik ISL series 560123 or TPA series 505151., The Operating Temperature Range when used with DuraClik series 502351 is -40°C to +105°C. It is -40°C to 125°C when used with DuraClik ISL series 560123 or TPA series 505151.
[DuraClik Connector System](#)

Overview

PITCH-MATING-NUMERIC 2.00
 Product Name DuraClik
 UPC 887191747095

Physical

Breakaway No
 Circuits (Loaded) 3
 Circuits (maximum) 3
 Color - Resin Natural
 Durability (mating cycles max) 30
 First Mate / Last Break No
 Flammability SC-0
 Glow-Wire Capable No
 Keying to Mating Part None
 Lock to Mating Part Yes
 Material - Metal Copper Alloy
 Material - Plating Mating Tin over Nickel
 Material - Resin Polyamide
 Net Weight 0.578/g
 Number of Rows 1
 Orientation Vertical
 PCB Locator No
 PCB Retention Yes
 Packaging Type Embossed Tape on Reel
 Pitch - Mating Interface 2.00mm
 Polarized to Mating Part Yes
 Polarized to PCB Yes
 Stackable No



Series image - Reference only

EU ELV

Compliant

EU RoHS

Compliant

REACH SVHC

Not Contained Per - ED/71/2019 (16 July 2019)

Halogen-Free

Status

Not Low-Halogen

For more information, please visit [Contact US](#)

China ROHS

ELV

RoHS Phthalates

China RoHS

Green Image

Compliant

Not Contained

Search Parts in this Series

[560020](#) Series

Mates With

DuraClik Crimp Housings [502351](#) , [560123](#) , [505151](#)

Temperature Range - Operating -40° to +105°C, -40° to +125°C
Termination Interface: Style Surface Mount

Electrical

Current - Maximum per Contact 3.0A
Voltage - Maximum 125V AC (RMS)/DC

Solder Process Data

Duration at Max. Process Temperature (seconds) 004
Lead-free Process Capability REFLOW
Max. Cycles at Max. Process Temperature 001
Process Temperature max. C 255

Material Info

Reference - Drawing Numbers

Packaging Specification PK-560020-002-JP-001
Product Specification PS-502351-001-001
Sales Drawing SD-560020-001-001, SD-560020-003-001

This document was generated on 11/20/2019

PLEASE CHECK WWW.MOLEX.COM FOR LATEST PART INFORMATION