

**PLEASE CHECK WWW.MOLEX.COM FOR LATEST PART INFORMATION**

**Part Number:** [0988221020](#)  
**Status:** **Active**  
**Overview:** NSCC - New Standard Casing Contact  
**Description:** NSCC 3.33mm Pitch Male Pin Connector, Non-Sealed, 2 Circuits, White

**Documents:**

<a href="#">3D Model</a>	<a href="#">Application Specification AS-98821-001-001 (PDF)</a>
<a href="#">Drawing (PDF)</a>	<a href="#">Packaging Specification PK-31301-635 (PDF)</a>
<a href="#">Product Specification PS-98821-001-001 (PDF)</a>	<a href="#">RoHS Certificate of Compliance (PDF)</a>

**General**

Product Family	Crimp Housings
Series	<a href="#">98822</a>
Application	Wire-to-Wire
Application Tooling Part Link	63813-3800
Overview	<a href="#">NSCC - New Standard Casing Contact</a>
Product Name	NSCC
UPC	822348816910

**Physical**

Circuits (maximum)	2
Circuits Detail	2
Color - Resin	White
Gender	Plug
Glow-Wire Compliant	No
Lock to Mating Part	Yes
Material - Resin	PBT
Net Weight	4.493/g
Number of Rows	1
Packaging Type	Carton
Panel Mount	No
Pitch - Mating Interface	3.33mm
Polarized to Mating Part	Yes
Stackable	No
Temperature Range - Operating	-40°C to +85°C

**Electrical**

Current - Maximum per Contact	10.0A
-------------------------------	-------

**Solder Process Data**

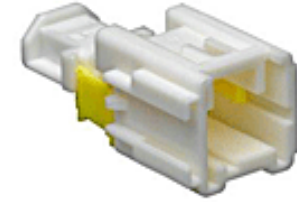
Lead-freeProcess Capability	N/A
-----------------------------	-----

**Material Info**

Engineering Number	07519EV2F9
--------------------	------------

**Reference - Drawing Numbers**

Application Specification	AS-98821-001-001
Packaging Specification	PK-31301-635
Product Specification	PS-98821-001-001
Sales Drawing	SD-98822-004



*Series image - Reference only*

**EU ELV**

**Compliant**

**EU RoHS**

**Compliant**

**REACH SVHC**

Not Contained Per  
-ED/79/2015 (17  
December 2015)

**Halogen-Free**

**Status**

**Not Reviewed**

**Need more information on product environmental compliance?**

Email [productcompliance@molex.com](mailto:productcompliance@molex.com)  
Please visit the [Contact Us](#) section for any non-product compliance questions.

China ROHS	Green Image
ELV	Compliant
RoHS Phthalates	Not Contained

**Search Parts in this Series**

[98822](#) Series

**Mates With**

[98817](#) NSCC 3.33mm Pitch Female Housing

**Use With**

1.50mm Size FCI SICMA Male Terminal

**Application Tooling | FAQ**

*Tooling specifications and manuals are found by selecting the products below. Crimp Height Specifications are then contained in the Application Tooling Specification document.*

**Global**

**Description**

**Product #**

Extractor Tool for Unsealed Receptacle Connectors	<a href="#">0638133800</a>
---	----------------------------

This document was generated on 09/11/2017

**PLEASE CHECK [WWW.MOLEX.COM](http://WWW.MOLEX.COM) FOR LATEST PART INFORMATION**