

PLEASE CHECK WWW.MOLEX.COM FOR LATEST PART INFORMATION

Part Number: **0761703036**
Status: **Active**
Overview: Impact™ Backplane Connector and Cable Assembly System
Description: Impact™ 100 Ohm 3 Pair Right Angle Daughtercard Receptacle, Left Guided, 6 Columns, 54 Circuits, Plated Through Hole Dimension 0.39mm, Lead-Free

Documents:

3D Model	Application Specification AS-76060-990-001 (PDF)
Drawing (PDF)	Application Specification AS-76060-9999-001 (PDF)
Product Specification PS-76060-999-001 (PDF)	Packaging Specification PK-70873-591 (PDF)
Product Specification TS-76170-0001-001 (PDF)	RoHS Certificate of Compliance (PDF)

Agency Certification

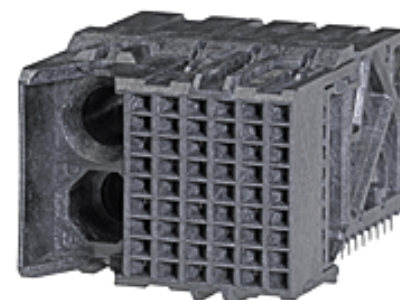
UL E29179

General

Product Family	Backplane Connectors
Series	<u>76170</u>
Application	Conventional, Coplanar, Daughtercard
Application Tooling Documents	TM-622018799
Component Type	PCB Receptacle
Electrical Model	Yes
Overview	<u>Impact™ Backplane Connector and Cable Assembly System</u>
Product Name	Impact™
UPC	884982238954

Physical

Circuits (Loaded)	54
Circuits (maximum)	54
Color - Resin	Black
Durability (mating cycles max)	200
First Mate / Last Break	No
Flammability	94V-0
Guide to Mating Part	Yes
Keying to Mating Part	None
Material - Metal	High Performance Alloy (HPA)
Material - Plating Mating	Gold
Material - Plating Termination	Tin
Material - Resin	High Temperature Thermoplastic
Net Weight	7.346/g
Number of Columns	6
Number of Pairs	3
Number of Rows	9
Orientation	Right Angle
PC Tail Length	1.20mm
PCB Locator	No
PCB Retention	None
PCB Thickness - Recommended	1.00mm
Packaging Type	Tray
Pitch - Mating Interface	1.90mm
Pitch - Termination Interface	1.90mm
Plating min - Mating	0.762µm
Polarized to PCB	No
Stackable	No
Temperature Range - Operating	-55°C to +85°C
Termination Interface: Style	Through Hole - Compliant Pin



Series image - Reference only

EU ELV

Not Relevant

EU RoHS

Compliant

REACH SVHC

Not Contained Per
-ED/01/2017 (12
January 2017)

Halogen-Free

Status

Low-Halogen

**Need more information on product
environmental compliance?**

Email productcompliance@molex.com
Please visit the [Contact Us](#) section for any
non-product compliance questions.

China ROHS	Green Image
ELV	Not Relevant
RoHS Phthalates	Not Contained

Search Parts in this Series

76170 Series

Mates With

76165 Impact™ 100 Ohm Vertical Header,
76410 Impact™ 100 Ohm Right Angle
Header

Electrical

Current - Maximum per Contact	0.75A
Data Rate	25.0 Gbps
Impedance	100Ω
Shield Type	N/A
Shielded	No
Voltage - Maximum	30V AC (RMS)/DC

Solder Process Data

Lead-free Process Capability	N/A
------------------------------	-----

Material Info**Reference - Drawing Numbers**

Application Specification	AS-76060-990-001, AS-76060-9999-001
Electrical Model Document	EE-76170-003
Packaging Specification	PK-70873-591
Product Specification	PS-76060-999-001, TS-76170-0001-001
S-Parameter Model	SP-76170-003
Sales Drawing	SD-76170-002
Symbol/Footprint Data	SYM-76170-3036

This document was generated on 08/21/2017

PLEASE CHECK WWW.MOLEX.COM FOR LATEST PART INFORMATION