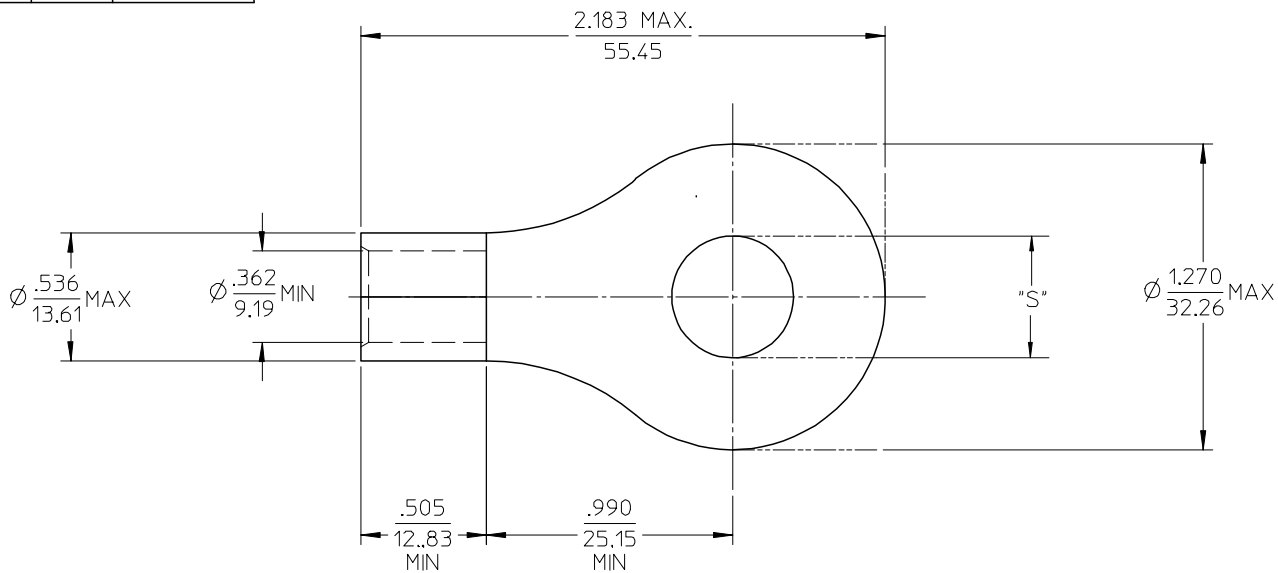


MATERIAL NO. LOOSE PIECE	ENG. NO.	STUD SIZE	±.003 "S"	STOCK THICKNESS
191930319	G-377-14	1/4	.265	.075 (1.90)
191930322	G-377-56	5/16	.328	
191930321	G-377-38	3/8	.390	
191930324	G-377-76	7/16	.453	
191930318	G-377-12	1/2	.515	
191930611	G-377-58	5/8	.656	
191930320	G-377-34	3/4	.781	



SALES DRAWING

- NOTE(S):
1. MATERIAL: COPPER
 2. PLATING: ELECTROPLATE TIN
 3. ALL DIMENSIONS IN INCHES/(MM).
 4. WIRE SIZE: 2 AWG
35 MM²

UPDATE TO MX STDS EC NO: ETC2003-0315 DRWN:DMYRICK 2003/08/20 CHKD:HEB 2003/08/21 APPR:RDEROSS 2003/08/21	QUALITY SYMBOLS	GENERAL TOLERANCES (UNLESS SPECIFIED)	SCALE 2:1	DESIGN UNITS INCH	THIRD ANGLE PROJECTION	REVISE ON CAD ONLY	
	▼ = 0 ▽ = 0	4 PLACES ± --- ± ---	mm INCH	DIMENSION STYLE IN/MM		TITLE	RING TONGUE TERMINAL VERSAKRIMP 2 AWG
		3 PLACES ± --- ± .005		DRAWN BY DLM	DATE 03/07/11		
		2 PLACES ± 0.13 ± .01		CHECKED BY HEB	DATE 03/07/11	MATERIAL NO. (SEE CHART)	DOCUMENT NO. SD-19193-030
	1 PLACE ± 0.25 ± ---	ANGULAR ± 1/2°	APPROVED BY RWD	DATE 03/07/11	MOLEX INCORPORATED THIS DRAWING CONTAINS INFORMATION THAT IS PROPRIETARY TO MOLEX INCORPORATED AND SHOULD NOT BE USED WITHOUT WRITTEN PERMISSION		
		DRAFT WHERE APPLICABLE					
		MUST REMAIN WITHIN DIMENSIONS					